

**RFQ (Request for Quotes)**  
(\$10,000 to \$50,000)  
**City of Brockton, Brockton Parking Authority**  
PROJECT # BPA-RFQ23-ISLAND  
Masonry Work- Construction of a Concrete Island at Bill Carpenter Parking Garage

**ISSUED:** (Wednesday) June 7, 2023  
**SITE VISIT:** (Thursday), June 15, 2023, at 10:00 A.M.  
**RETURN/DEADLINE:** (Wednesday), June 28, 2023 (NO LATER THAN 4:30 P.M.)

**GENERAL INFORMATION**

It is the declared and acknowledged intention to procure an experienced contractor to construct a new Concrete Island at the Mayor Bill Carpenter Parking Garage, located at 31 Petronelli Way Brockton, MA 02301. Please see the summary of work for more details.

**QUOTE PACKAGES MAY BE DOWNLOADED FROM THE FOLLOWING:**  
**[www.brockton.ma.us](http://www.brockton.ma.us) Go to the Postings Tab, then click on See All Procurement Postings.**

1. **Questions** concerning this RFQ must be submitted in writing before 4:30 P.M. on Wednesday, June 21, 2023, via email to **Eric Akesson, Brockton Parking Authority** at [parking@cobma.us](mailto:parking@cobma.us)
2. A Site visit is scheduled on (Thurs.), June 15, 2023, at 10:00 A.M. at the project site, which is 31 Petronelli Way Brockton, MA. **All Contractors are encouraged to attend.**
3. For Quotes greater than \$25,000, the successful vendor/contractor must furnish a 50% (fifty percent) Payment Bond with a surety company acceptable to the Owner.
4. **This is a Prevailing Wage Project. Rates are included in this quote package.**
5. As a Successful Contractor/Quoter you will be required to supply the City of Brockton with a properly endorsed CERTIFICATE OF INSURANCE. Both the City of Brockton and the vendor shall be named as co-insured/additional insured and the City of Brockton shall be named as owner.
6. The successful vendor/contractor must certify, under the pains and penalties of perjury, that they are able to furnish labor in harmony with all other elements of labor employed in the work and that all employees employed on the worksite, or in work subject to the bid, have successfully completed at least 10 hours of OSHA approved training.
7. A written contract will be completed upon award of the lowest most responsible and responsive quote.
8. If you download an RFQ, it is your responsibility to check back for any addendums before submitting a response. The City of Brockton accepts no liability for quote submittals that fail to acknowledge any addenda. Acknowledge any addendums on the Quote Page 1.

**RETURN THE COMPLETED RFQ QUOTE PAGE TO:**

The City of Brockton, Brockton Parking Authority at [parking@cobma.us](mailto:parking@cobma.us)

NO LATER THAN **(Wednesday) June 28, 2023** (ON/BEFORE 4:30 P.M.)

**Any quotes received after this date & time shall not be accepted**

## SCOPE OF WORK

The Mayor Bill Carpenter Parking Garage is a 415-space parking facility owned by the Brockton Parking Authority. Due to the current facility's gateless and license plate recognition access having operational failures, the garage needs a new fiber-reinforced concrete island.

Bidder will provide a divisional traffic control island to separate inbound and outbound traffic flow for the Mayor Bill Carpenter Garage and facilitate the installation of gated Parking Access and Revenue Control Systems (PARCS) equipment. The island shall be twenty feet (20') in length, 30 inches (30") in width, and six inches (6") in height and shall be situated at the entry to preserve a minimum travel lane of nine feet (9') for inbound and outbound traffic. The island shall be situated in such a manner as to allow at least one vehicle length of queue depth (~ 18') between the location of the inbound gate arm and the outward most end of the island and at least four feet (4') between the outward most end of the island and the abutting public street. All bids and awarded work will align and comply with the standards set forth in Sections 03300 (Concrete Work), 03200 (Concrete Reinforcement), and 03240 (Fibrous Reinforcement in Concrete).

## SECTION 03200

### CONCRETE REINFORCEMENT

#### PART 1 - GENERAL

##### 1.01 RELATED DOCUMENTS

- A. Drawings and general provisions of the contract, including General Conditions and Division 1 Specification Sections, apply to this Section.

##### 1.02 DESCRIPTION

- A. Furnish, fabricate, and install reinforcement and associated items required or indicated on the drawings for cast-in-place concrete, including, but not necessarily limited to, conventional and epoxy-coated bars, welded wire fabric, ties, and supports.

##### 1.03 WORK SPECIFIED ELSEWHERE

- A. Furnishing and placement of inserts, anchorages, and other embedded items as specified in other sections.

##### 1.04 QUALITY ASSURANCE

- A. Unless otherwise shown or specified, fabrication and placement of all concrete reinforcement and related items shall conform to the following codes and standards:
  1. American Concrete Institute, ACI 318, "Building Code Requirement for Reinforced Concrete."
  2. American Concrete Institute, ACI 315, "Manual of Standard Practice for Detailing Reinforced Concrete Structures."
  3. Concrete Reinforcing Steel Institute, "Manual of Standard Practice."

##### 1.05 SUBMITTALS

- A. Shop Drawings: Submit shop drawings for fabrication, bending, and placement of concrete reinforcement. Comply with the ACI 315 "Manual of Standard Practice for Detailing Reinforced Concrete Structures." Show bar schedule, stirrup spacing, diagrams of bent bars, arrangements and assemblies, for the fabrication and placement of concrete reinforcement.

##### 1.06 PRODUCT DELIVERY, STORAGE AND HANDLING

- A. Delivery: Deliver reinforcement to the Project Site bundled, tagged, and marked. Use metal tags indicating bar size, lengths, and other information corresponding to markings shown on placement diagrams.
- B. Protection: Use all means necessary to protect concrete reinforcement before, during, and after installation and to protect the materials and installed work of all trades. Take all necessary precautions to maintain the identification of fabricated bars after bundles are broken.
- C. Storage: Store concrete reinforcement materials at the site to prevent damage and accumulation of dirt or excessive rust. Epoxy-coated reinforcing bars shall be stored on protective cribbing.

- D. Epoxy-coated reinforcing bars: Coating damage due to handling, shipment and placing need not be repaired where the damaged area is 0.1 square inches or smaller; damaged areas larger than 0.1 square inches shall be repaired with Section 2.01 C; the maximum amount of damage including repaired and unrepaired areas shall not exceed 2 percent of the surface area of each bar.

## **PART 2 - PRODUCTS**

### **2.01 MATERIALS**

- A. Reinforcing Bars: ASTM A615, Grade 60, deformed.
- B. Welded Wire Fabric: ASTM A82 and ASTM A185. (EPOXY COATED)
- C. Epoxy-Coated Reinforcing Bars: ASTM A775. When required, damaged epoxy coating shall be repaired with patching material conforming to ASTM A775 and done in accordance with the material manufacturer's recommendations. Reinforcing bars to be coated shall conform to Section 2.01-A.
- D. Bar Supports: Bar supports and spacing of same shall be per recommendations set forth by Chapter 3 of the "CRSI Manual of Standard Practice." Epoxy-coated reinforcing bars supported from formwork shall rest on coated wire bar supports, or on bar supports made of dielectric material or other acceptable materials. Wire bar supports shall be coated with a dielectric material, compatible with concrete, for a minimum distance of 2 inches from the point of contact with epoxy-coated reinforcing bars. Reinforcing bars used as support bars shall be epoxy-coated.
- E. Tie Wire: Wire shall be 16 gauge or heavier, black-annealed. Epoxy-coated reinforcing bars shall be tied with plastic-coated, epoxy-coated, or nylon-coated tie wire or other acceptable materials.
- F. For epoxy grouting reinforcing steel use the Hilti "HIT RE 500 System" supplied by Hilti Fastening Systems, "Dowel Fast" System by Powers Fasteners, or approved equal. Follow the manufacturer's directions for installation and required surface preparation.

### **2.02 FABRICATION**

- A. General Requirements: Fabricate reinforcing bars to conform to required shapes and dimensions, with fabrication to tolerances complying with CRSI Manual of Standard Practice. In case of fabricating errors, do not rebend or straighten reinforcement in a manner that will injure or weaken the material.
- B.
- C. Unacceptable Workmanship: Reinforcement with any of the following defects will not be permitted in the work:
1. Bar lengths, depths and bends exceeding specified fabrication tolerances.
  2. Bends or kinks not indicated on drawings or final shop drawings.
  3. Bars with reduced cross-section due to excessive rusting or other cause.
- D. When epoxy-coated reinforcing bars are cut in the field, the ends of the bars shall be coated with the same material used for repair of coating damage.

## PART 3 - EXECUTION

### 3.01 PLACING REINFORCEMENT

#### A. General Requirements:

1. All reinforcing bars shall be placed in accordance with CRSI "Recommended Practice for Placing Reinforcing Bars."
2. Bars shall be placed to the tolerance specified in ACI 318-99.
3. Place all reinforcement according to the approved placement drawings. Use sufficient bar supports, tie anchors, additional reinforcing bars, if required, and other accessories to hold all bars securely in place.

#### B. Concrete Coverage: Place reinforcement to obtain the minimum coverages specified on the drawings for concrete protection. Arrange, space, and securely tie bars and bar supports together with 16 gauge wire to hold reinforcement accurately in position during concrete placement operation. Set wire ties so that twisted ends are directed away from exposed concrete surfaces.

#### C. Cleaning Reinforcement: Steel reinforcement, at the time concrete is placed around it, shall be free from loose rust and mill scale, oil, grease, paint, earth, ice and all coatings, which would reduce or destroy bond between steel and concrete. Clean reinforcement as necessary prior to, during, or after placement to achieve this result. When bars project from construction joints, all cement mortar clinging to the bars from previous concreting shall be removed before the ensuing enveloping concrete is placed.

### 3.02 REINFORCING BAR LAP SPLICES

- A. New slab reinforcing bars may be spliced to existing bars by lapped splices if adequate lengths of exposed existing bars are available. Provide reinforcement lap splices by placing bars in contact and tying with wire tightly. Comply with the requirements of Engineering Data Report Number 45, 'Tension Development and Lap Splice Lengths of Reinforcing Bars Under ACI 318-99' for minimum required length of bar for lap splices. Alternatively, the Contractor can follow the values provided below for lap splice lengths based on the following guidelines:

#### LAP SPLICE LENGTHS FOR BARS IN TENSION (IN INCHES)

<u>Bar Size</u>	<u>Uncoated Reinforcement</u>	<u>Epoxy-Coated Reinforcement</u>
3	16	17
4	16	22
5	22	33
6	31	46
7	50	74
8	62	93

Note 1. Based on Class B splice =  $1.3 l_d$  ( $l_d$  = tensile development length) Normal weight concrete

$f'_c$  = 4,000 psi min.

Grade 60 reinforcement

Concrete cover = 1.00 in. or greater

Bars have less than 12 in. concrete cast below them.

Note 2. Lap splice lengths for epoxy-coated steel based on concrete cover equal to or greater than 3 bar diameters and clear spacing between bars equal to or greater than 6 bar diameters.

Note 3. For lightweight aggregate concrete, multiply the tabulated values by 1.3.

- B. Do not make splices at points of maximum stress if possible.
- C. Stagger top splices, and in horizontal wall reinforcement separate at least five feet longitudinally in alternate bars of opposite tiers.
- D. Stubs and dowels required to receive and engage subsequent work shall extend a sufficient length to develop the strength of the bar. Place dowel and stub bars in the forms and secure against displacement during the placing of concrete. Where stub steel and dowels extend through construction joints in walls, they shall be thoroughly cleaned of adhering particles of concrete, before continuing the placing of any subsequent concrete.
- E. Where splicing length is insufficient either additional concrete removal or mechanical bar splicing shall be implemented at the direction of the Engineer.

**END OF SECTION**

## SECTION 03240

### FIBROUS REINFORCEMENT IN CONCRETE

#### PART 1 - GENERAL

##### 1.01 RELATED DOCUMENTS

- A. Drawings and general provisions of the contract, including General Conditions and Division 1 Specification Sections, apply to this Section.

##### 1.02 SCOPE OF WORK

- A. All concrete work used in this project shall be fiber reinforced as specified herein.

##### 1.03 STANDARDS

A. Testing:

1. Slump - Perform conventional slump test in accordance with A.S.T.M. C143 prior to adding the fibrous reinforcement.
2. Test Specimens - Fiber-reinforced concrete test specimens prepared for quality control/material acceptance shall be vibrated externally as opposed to internal rodding per the recommendations of ACI 544.

B. Submittals:

1. Sufficient data shall be submitted verifying all fibrous reinforcement physical properties as specified in Section 2.01.C inert polypropylene, twisted fibrillated bundles, length, specific gravity, modulus of elasticity, tensile strength as well as volume used as specified.
2. Acceptable submittals shall be manufacturer's Sweets Engineering Catalogue and/or C.S.I. Spec-Data covering all data as specified.

C. Acceptable Manufacturers:

1. "FORTA CR" as manufactured by the FORTA Corporation.
2. "FIBERMESH" as manufactured by Master Builders Technologies.
3. "Grace Microfiber" as manufactured by Grace Construction Products.

#### PART 2 - PRODUCTS

##### 2.01 MATERIAL

- A. General Description - Synthetic fibrous reinforcement to be used as secondary/temperature reinforcement in the Portland cement concrete.
- B. Areas of Use - Fibrous reinforcement to be used in new ready-mixed concrete.
- C. Physical Properties
1. Chemical: Fibrous reinforcement shall be chemically and alkali inert, virgin polypropylene.
  2. Configuration: Fibrous reinforcement shall be in collated fibrillated (connected screen) form and also in twisted bundle form.
  3. Length: The fibrous bundle length shall be a minimum of 0.75".
  4. Specific Gravity: 0.91

5. Modulus of Elasticity:  $0.70 \times 10$  to the 6th p.s.i.
6. Tensile Strength: 70,000 p.s.i. minimum

### **PART 3 - EXECUTION**

#### **3.01 INSTALLATION**

- A. Volume - The fibrous reinforcement shall be used at the rate of 1.5 pounds (minimum) per cubic yard of concrete.
- B. Addition and Mixing - The fibrous reinforcement shall be added directly into the concrete either at the batch plant or at the job site. If added at the batch plant with the aggregates, typically no additional site mixing time is required. If a superplasticizer is used, the fibrous reinforcement shall be added first. If the mixing drum contains less than 50% of capacity (i.e. 4 cubic yards in a 10 cubic yard capacity drum), back the concrete up to the top of discharge and empty the fibrous reinforcement directly on top of the concrete before mixing.
- C. Placement - Fibrous reinforced concrete shall be moved and placed per standard A.C.I. recommendations. Tined rakes are prohibited as a means of moving the fibrous concrete. If pumping or shooting fibrous concrete, elevate ready mix discharge chute approximately 12" (or higher) above the pump grate or screen to improve the fibrous concrete flow into the pump.
- D. Finishing - Standard A.C.I. recommended finishing practices apply for fibrous concrete with the following additional considerations:
  1. Hard-Trowel Finish - Avoid Wood trowels and floats which are abrasive to the surface - use steel/magnesium tools.
  2. Textured Finish - use stiff-bristled broom (bristles stiffer than the fibers themselves) and brush in only one direction.
  3. Cure and joint properly per A.C.I. standard recommendations.
- E. It should be noted that fibrous reinforced concrete bleeds less and slightly slower than unreinforced concrete which should be considered during the finishing process.

**END OF SECTION**



## SECTION 03300

### CONCRETE WORK

#### PART 1 - GENERAL

##### 1.01 RELATED DOCUMENTS

- A. Drawings and general provisions of the Contract, including General Conditions and Division 1 Specification Sections, apply to this Section.

##### 1.02 SUMMARY

- A. This Section specifies cast-in-place concrete, including formwork, mix design, placement procedures and finishes.

##### 1.03 SCOPE OF WORK

- A. This work shall consist of placing new, low water/cement ratio, fiber-reinforced, air-entrained structural concrete for a Parking Access and Revenue Control System (PARCS) concrete island according to the specifications.

##### 1.04 SUBMITTALS

- A. General: Submit the following in accordance with Conditions of Contract and Division 1 Specification Sections.
- B. Product data for proprietary materials and items, including forming accessories, admixtures, patching compounds, bonding grout/agent, joint systems, curing compounds, and others as requested by Consultant.
- C. The Contractor shall submit trial mix proportion with compressive strength test results to the Consultant for approval.
- D. The Testing Agency shall submit test results of cylinders for each day's testing.
- E. The Contractor shall submit the proposed pouring sequence and construction joint layout for approval by the Consultant.
- F. Minutes of pre-construction conference.

##### 1.05 QUALITY ASSURANCE

- A. Codes and Standards: Comply with provisions of following codes, specifications, and standards, except where more stringent requirements are shown or specified:
  - 1. ACI 318-99, "Building Code Requirements for Structural Concrete," or AASHTO specifications.
- B. Materials and installed work may require testing and retesting at any time during progress of work. Retesting of rejected materials for installed work, shall be done at Contractor's expense.

- C. Pre-Construction Conference: Conduct conference at Project site to comply with requirements of Division 1 Requirements. The minutes shall include a statement by the concrete contractor indicating that the proposed mix design and placing techniques will produce the concrete quality required by these specifications.

#### 1.06 APPLICATOR'S QUALIFICATIONS

- A. The Contractor shall have a minimum of five years of experience in performing work similar to that shown in the drawings and specifications.
- B. The Contractor may be requested to submit a list of five projects in which similar work to that specified was successfully completed. This list shall contain the following for each of the five projects.
  - 1. Project Name
  - 2. Owner of Project
  - 3. Owner's Representative, Address and Telephone Number
  - 4. Brief Description of Work
  - 5. Cost of Portion of Work Similar to that Specified in this Section
  - 6. Total Restoration Cost of Project
  - 7. Date of Completion

### PART 2 - PRODUCTS

#### 2.01 FORM MATERIALS

- A. Forms for Exposed Finish Concrete: Plywood, lumber, metal, or other acceptable material. Provide lumber dressed on at least 2 edges and one side for tight fit.
- B. Forms for Unexposed Finish Concrete: N/A
- C. Form Coatings: Provide commercial formulation form-coating compounds that will not bond with, stain, or adversely affect concrete surfaces and will not impair subsequent treatments of concrete surfaces.
- D. Form Ties: Factory-fabricated, adjustable-length, removable or snap-off metal form ties, designed to prevent form deflection and to prevent spalling concrete upon removal. Provide units that will leave no metal closer than 1-1/2 inches to exposed surface.
  - 1. Provide ties that, when removed, will leave holes not larger than 1-inch diameter in concrete surface.

#### 2.02 CONCRETE MATERIALS

- A. Portland Cement: ASTM C 150, Type I, non air-entraining, of recent manufacture and free of lumps.
  - 1. Use one brand of cement throughout project unless otherwise acceptable to Consultant.
  - 2. Pozzolanic materials (fly ash or slag) may be substituted for a portion of the cement when reviewed and approved by the Consultant or Owner's representative. Submittals must indicate testing to prove its suitability in combination with the intended cement and aggregate.
  - 3. Additional, sustained moist curing of the concrete is required when pozzolans are used.
- B. Normal Weight Aggregates: ASTM C-33 and as herein specified. Provide aggregates from a single source for exposed concrete. Coarse aggregates shall be clean, sound crushed stone or crushed gravel. Maximum size of coarse aggregate shall be 3/4 inch. No chert shall be permitted.

- C. Water: Potable water.
- D. Sand: ASTM C-33. Sand shall be clean and sharp.
- E. Admixtures, General: Provide admixtures for concrete that are free from chloride ions.
- F. Air-Entraining Admixture: ASTM C-260, certified by manufacturer to be compatible with other required admixtures.
1. Available Products: Subject to compliance with requirements, products that may be incorporated in the work include, but are not limited to, the following:
  2. Products: Subject to compliance with requirements, provide one of the following:
    - a. "Air-Mix" or "AEA-92," Euclid Chemical Co.
    - b. "Darex AEA" or "Daravair," W.R. Grace & Co.
    - c. "MasterAir VR10 (MB-VR STD)" or "MasterAir AE200 (Micro-Air)," Master Builders
    - d. "Sealtight AEA," W.R. Meadows, Inc.
    - e. "Sika AER," Sika Corp.
- G. Water-Reducing Admixture: ASTM C 494, Type A.
1. Available Products: Subject to compliance with requirements, products that may be incorporated in the work include, but are not limited to, the following:
  2. Products: Subject to compliance with requirements, provide one of the following:
    - a. "Eucon WR-75," "WAR-91" or "Eucon MR," Euclid Chemical Co.
    - b. "WRDA with Hycol," or "Daracem 65," W.R. Grace & Co.
    - c. "Master Pozzolith 322 (Pozzolith 322 N)" or "MasterPolyheed 997 (Polyheed 997)," Master Builders, Inc.
    - d. "Plastocrete 161," Sika Corp.
- H. High-Range Water-Reducing Admixture (Super Plasticizer): ASTM C 494, Type F or Type G.
1. Available Products: Subject to compliance with requirements, products that may be incorporated in the work include, but are not limited to, the following:
  2. Products: Subject to compliance with requirements, provide one of the following:
    - a. "Eucon 37," "Eucon 1037," or "Plastol 5000," Euclid Chemical Co.
    - b. "WRDA 19" or "Daracem 100," W.R. Grace & Co.
    - c. "MasterRheobuild 1000 (Rheobuild 1000)," Master Builders, Inc.
    - d. "Sikament 300," Sika Corp.
- I. Water-Reducing, Retarding Admixture: ASTM C 494, Type D.
1. Available Products: Subject to compliance with requirements, products that may be incorporated in the work include, but are not limited to, the following:
  2. Products: Subject to compliance with requirements, provide one of the following:
    - a. "Eucon Retarder 75," Euclid Chemical Co.
    - b. "Daratard-17," W.R. Grace & Co.
    - c. "MasterSet R100 (Pozzolith 100XR)," Master Builders, Inc.
    - d. "Plastiment," Sika Corporation.
- J. Certification: Written conformance to the above-mentioned requirements and the chloride ion content of admixtures will be required from the admixture manufacturer prior to mix design review by the Engineer.

K. Fibrous Reinforcement:

1. Subject to compliance with requirements, provide fibrous reinforcement as per specification Section 03240.

2.03 RELATED MATERIALS

- A. Reglets: Where resilient or elastomeric sheet flashing or bituminous membranes are terminated in reglets, fill reglet or cover face opening to prevent intrusion of concrete or debris.
- B. Moisture-Retaining Cover: Burlap and plastic complying with ASTM C 171.
- C. Moist Curing: Curing shall be accomplished by wet curing only. A curing membrane shall only be used in floor areas if approved in writing by the Consultant or Owner's representative.

2.04 PROPORTIONING AND DESIGN OF MIXES

- A. Prepare design mixes for concrete by laboratory trial batch or field experience methods as specified in ACI 301, Section 4.2.3. Use an independent testing facility acceptable to the Consultant for preparing and reporting proposed mix designs. The testing facility shall not be the same as used for field quality control testing.
- B. Submit written reports to the Consultant of each proposed mix at least 15 days prior to start of work. Do not begin concrete production until proposed mix designs have been reviewed and approved by the Consultant. All mix designs shall be submitted on a Mix Design Submittal Form.
- C. Design mix to provide structural concrete with the following properties;
  1. 5,000-psi, 28-day compressive strength, structural normal weight 145 pcf; W/C ratio, 0.38 maximum; fiber reinforcement as per Section 03240.

2.05 ADMIXTURES

- A. Use high-range water-reducing admixture (Superplasticizer) in concrete for placement and workability.
- B. Add air-entraining admixture at manufacturer's prescribed rate to result in concrete at point of placement having total air content of 6.0% with a tolerance of plus or minus 1.0 percent.
- C. Use admixtures for water reduction and set control in strict compliance with manufacturer's directions.
- D. Slump Limits: Proportion and design mixes to result in concrete slump at point of placement as follows:
  1. 3 inches plus or minus ½ inch, prior to addition of superplasticizing admixture.
  2. Not more than 8 inches final slump after addition of superplasticizing admixture.

## 2.06 CONCRETE MIXING

- A. Provide batch ticket for each batch discharged and used in work, indicating project identification name and number, date, mix type, mix time, quantity, and amount of water introduced.
- B. Ready-Mix Concrete: Comply with requirements of ASTM C 94, and as specified.
  - 1. When air temperature is between 85 deg F (30 deg C) and 90 deg F (32 deg C), reduce mixing and delivery time from 1-1/2 hours to 75 minutes, and when air temperature is above 90 deg F (32 deg C), reduce mixing and delivery time to 60 minutes.

## PART 3 - EXECUTION

### 3.01. PREPARATION

- A. Remove concrete members as indicated on the drawing. The removal of concrete shall be performed using approved methods and prepare the concrete surfaces to receive new concrete as shown on plans and as directed by the engineer in the field.

### 3.02 FORMS

#### A. General:

#### B.

- 1. The Contractor shall submit detailed drawings for form work for examination by the Consultant. If such drawings are not satisfactory to the Consultant, the Contractor shall make such changes in them as may be required, but it is understood that the Consultant's examination of the drawings as submitted or corrected shall in no way relieve the Contractor of responsibility for obtaining satisfactory results.
- 2. All forms shall be so constructed and maintained that the finished concrete will be true to line and grade and of the shape and dimensions shown on the Plans. The forms shall be constructed so that they can be removed without injury to the concrete.
- 3. Forms shall be mortar-tight, sufficiently rigid to prevent distortion due to the wet concrete mix and other loads incident to construction operations, including vibration, and so constructed and maintained to prevent warping and opening of the joints due to shrinkage of the form material. Molding strips shall be placed in the corners of forms so as to produce beveled edges on permanently exposed concrete corners.
- 4. The interior of forms shall be treated with a non-staining form oil before concrete is placed to prevent adhesion of the concrete to the form.
- 5. All lumber in contact with concrete shall be free from knot holes, loose knots, cracks, splits, warps or any other defects which would mark the appearance of the finished structure. Any lumber which had defects affecting its strength shall not be used.
- 6. In designing forms, concrete shall be considered as a liquid weighing 150 pounds per cubic foot for vertical loads and for computing the hydrostatic head for horizontal pressure. In addition, a live load allowance of 50 pounds per square foot shall be used on horizontal projections of surfaces. Forms shall be designed so that no member will develop a dead load deflection of more than 1/270th of the span.
- 7. Spreader blocks and non "stay-in-place" bracing shall be removed from forms before concrete is placed. In no case, shall any portion of wood be left in the concrete.

#### C. Forms for Permanently Exposed Surfaces:

- 1. Forms for concrete surfaces that will be permanently exposed to view shall be constructed of plywood or of metal panels. Wood or metal linings for forms shall be of such kind and quality, or shall be so treated or coated, that there will be no chemical deterioration or discoloration of the formed concrete surface. The type and condition of form linings, and the construction of the forms,

shall be such that form surfaces will be even and uniform.

2. Plywood sheets less than five-eighth inch in thickness shall be placed against a solid wood backing of three-quarter inch sheathing. Plywood sheets five-eighth inch or more in thickness may be used without backing, provided the forms are constructed to withstand pressure developed during placing of concrete without producing visible waviness between studs. Plywood sheets shall be placed so that joints are tight and with the long dimension horizontal.
3. Metal for forms shall be of such thickness that the forms will remain true to shape. Clamps, pins, or other connecting devices shall be such that they will hold the forms rigidly together in place and allow removal without injury to the concrete. Metal forms which do not present a smooth surface or line up properly shall not be used. All metal forms shall be kept free from rust, grease, or other foreign material which would discolor the concrete.
4. Form panels, either of wood or metal, shall be constructed and assembled so as to result in tight joints between the panels.

D. Form Anchorage:

1. Forms shall be securely tied together with approved rods, and braced in a substantial and unyielding manner. In general, tie rods shall be designed to also act as struts or spreader. Wood struts will not be permitted to remain in the concrete.
2. For concrete surfaces that will be permanently exposed to view, metal ties or anchorages within the forms shall be constructed so as to permit their removal to a depth of at least one and one-half inches from the face without injury to the concrete. The cavities on both sides of the concrete resulting from the removal of the end of form ties shall be filled with dry-pack Portland cement mortar having the same proportions of cement and sand as the mortar in the body of the concrete. The surface of the filling shall be left sound, smooth and even and shall match, insofar as practicable, the color of the surrounding concrete.
3. Devices which, when removed, will leave an opening entirely through the concrete will not be permitted. Wire ties shall not be used. Any parts of metal supports or spacers for reinforcement that are left in place within one and one-half inches of an exposed surface of the concrete shall be of non-rusting metal or have a non-rusting coating. If such parts are galvanized, the weight of zinc coating shall average not less than two ounces per square foot of actual surface.

E. Inspection of Forms:

1. All dimensions of forms in place shall be carefully checked before concrete is placed. Immediately prior to placing concrete, any warpings or bulging shall be corrected and all dirt, sawdust, shavings or other debris removed. In narrow walls where the bottom of the forms are otherwise inaccessible, the lower boards or panels shall be left loose on the back side so that extraneous material can be removed just prior to placing concrete.
2. If during placing of the concrete, the forms show signs of bulging or sagging, they shall be properly realigned and securely braced, and, if necessary to make proper correction, the portion of the concrete affected shall be removed.
3. When forms are unsatisfactory in any way, either before or during the placing of concrete, the placing shall be suspended until the defects are corrected.
4. If the forms develop any defects, such as bulging, sagging, leakage or irregular surfaces after the concrete has been poured, that portion of the work shall be removed, reconstructed or repaired as directed by the Consultant without additional compensation to the Contractor.

### 3.03 PLACING FINISHING AND CURING

#### A. Bonding Grout:

1. After the existing concrete surface has been cleaned, it shall be uniformly saturated by pre-wetting for 2 hours minimum. Surface must be wet to saturated surface dry (SSD) condition, and any freestanding water shall be completely removed prior to placing the bonding grout. Immediately before placing concrete, a thin coating of bonding grout shall be scrubbed into the properly prepared surface of the existing concrete. Proper workmanship shall be exercised to insure that all existing surfaces receive a thorough, even coating and that no excess grout is permitted to collect in pockets. The rate of progress in applying grout shall be limited so that the grout does not become dry before it is covered with new concrete.
2. Bonding grout for patching concrete to existing concrete shall consist of equal parts by weight of Portland Cement and sand mixed in a portable mechanical mixer with sufficient water to form a stiff slurry. The consistency of this slurry shall be such that it can be applied with a stiff brush or broom to the old concrete in a thin, even coating that will not run or puddle in low spots.
3. Should the bonding grout dry before the concrete is placed, the Contractor will remove the dried grout and sandblast clean the grouted surface, at his expense, before placing fresh bonding grout.
4. When the method of concrete removal includes hydromilling or hydrodemolition, the requirements for the use of bonding grout may be waived. Prepared surfaces shall be clean and free of laitance, foreign material and any debris encountered during surface preparation. Do not allow cement to dry and re-adhere on the surfaces. The surface shall be uniformly saturated by wetting for 4 hours (min.) Surface will be saturated surface dry (SSD) condition, and any free standing water shall be completely removed prior to concrete placement. No free moisture or puddles on the surface will be permitted or accepted.

B. Placing and finishing: After the bonding grout has been applied, concrete shall be placed, consolidated by vibration, and shall be finished by screening and bull floating to bring the finished surface to specified elevation. The surface shall then receive a light broom finish, as directed by the Engineer. The reinforcing steel shall have a minimum concrete cover as shown on plans. The finished concrete shall be suitably protected, until the completion of the required curing period. Provide tooled joints between new and existing concrete surfaces.

C. Curing: The recommendations of ACI 308 Standard Practice for Curing Concrete, shall be followed. When water is required to wet the surface of the newly placed concrete, it shall be applied as a fine spray so that it will not mark or pond on the surface. Except where otherwise specified, the curing period shall be at least 72 hours. If high early strength concrete is approved by the Consultant, the curing period may be reduced as directed by the Consultant. If fly ash or slag is approved in the mix by the Consultant, the curing time will be extended. Curing shall be accomplished by wet curing only. The curing and sealing compound shall only be used on floor and slab areas approved by the Consultant.

1. The surface of the newly poured concrete shall be covered with wetted burlap as soon as the concrete has hardened sufficiently to prevent marring of the surface. The burlap shall overlap six inches. At least two layers of wetted burlap shall be placed on the finished surface. The burlap shall be kept saturated by means of a mechanically operated sprinkling system. In place of the sprinkling system, two layers of burlap may be substituted for one layer of burlap and impermeable covering. The burlap sheets shall be placed so that they are in contact with the vertical faces of concrete slabs after removal of slab forms, and that portion of the material in contact with those faces shall be kept saturated with water.

2. Membrane Curing Method. Membrane curing will not be permitted unless approved in writing by the Consultant. Concrete at these locations shall be cured by another method as specified above. After the concrete has been finished, the surface shall be cured with the specified curing compound. The seal shall be maintained for the specified curing period. The vertical faces of concrete slabs shall, likewise, be sealed immediately after the forms are removed. This high solids curing and sealing compound shall be applied at a maximum coverage rate of 250 square feet per gallon. These applications shall be made with mechanical equipment.

At locations where the coating is discontinuous or where pin holes show or where the coating is damaged due to any cause and on areas adjacent to sawed joints, immediately after sawing is completed, an additional coating of membrane curing compound shall be applied at the rate of one gallon per 250 square feet.
3. The Consultant may order curing by another method specified herein if unsatisfactory results are obtained with a curing compound. Prior to starting The Work, the Contractor shall have available, at the site of The Work, supply of one of the other approved curing materials sufficient for curing one day's production.
4. The Contractor's construction operations including the management of traffic, shall be such as to avoid damage to the coatings of curing compound for period of not less than the curing period specified. Any curing compound that is damaged or that peels from the concrete surface within the curing period specified, shall be repaired by the Contractor without delay and in an approved manner. No additional compensation will be allowed to the Contractor for performance of this work.

#### 3.04 REMOVAL OF FORMS

- A. General: Formwork may be removed after cumulatively curing at not less than 50 deg F (10 deg C) for 72 hours after placing concrete, provided concrete is sufficiently hard to not be damaged by form-removal operations, and provided curing and protection operations are maintained.

#### 3.05 REUSE OF FORMS

- A. Clean and repair surfaces of forms to be reused in work. Split, frayed, delaminated, or otherwise damaged form-facing material will not be acceptable for exposed surfaces. Apply new form-coating compound as specified for new formwork.
- B. When forms are extended for successive concrete placement, thoroughly clean surfaces, remove fins and laitance, and tighten forms to close joints. Align and secure joint to avoid offsets. Do not use "patched" forms for exposed concrete surfaces except as acceptable to Consultant.

#### 3.06 CONCRETE SURFACE REPAIRS

- A. Patching Defective Areas: Repair and patch defective areas with bonding grout or proprietary repair products immediately after removal of forms, when acceptable to Consultant.
  1. Cut out honeycomb, rock pockets, voids over 1/4 inch in any dimension, and holes left by tie rods and bolts, down to solid concrete but in no case to a depth of less than 1 inch. Make edges of cuts perpendicular to the concrete surface. Thoroughly clean, dampen with water, and brush-coat the area to be patched with specified bonding agent. Place patching mortar before bonding grout has dried.



2. For exposed-to-view surfaces, blend white portland cement and standard portland cement so that, when dry, patching mortar will match surface texture of surrounding concrete. Provide test areas at inconspicuous location to verify mixture and color match before proceeding with patching. Compact mortar in place and strike-off slightly higher than surrounding surface.

B. Repair of Concrete Surfaces: Remove and replace concrete having defective surfaces if defects cannot be repaired to satisfaction of Consultant. Surface defects, as such, include color and texture irregularities, cracks, spalls, air bubbles, honeycomb, rock pockets, fins and other projections on surface, and stains and other discolorations that cannot be removed by cleaning. Flush out form tie holes, fill with dry-pack mortar, or precast cement cone plugs secured in place with bonding agent.

1. Repair concealed formed surfaces, where possible, that contain defects that affect the durability of concrete. If defects cannot be repaired, remove and replace concrete.

### 3.07 QUALITY CONTROL TESTING DURING CONSTRUCTION

A. General: The Owner will employ a testing laboratory to perform tests and to submit test reports.

B. Sampling and testing for quality control during placement of concrete may include the following, as directed by Consultant.

C. Sampling Fresh Concrete: ASTM C 172, except modified for slump to comply with ASTM C 94.

1. Slump: ASTM C 143; one test at point of discharge for each truck delivering the concrete; additional tests when concrete consistency seems to have changed.
2. Air Content: ASTM C 173, volumetric method for lightweight or normal weight concrete; ASTM C 231 pressure method for normal weight concrete; one for each truck of air-entrained concrete.
3. Concrete Temperature: Test hourly when air temperature is 40 deg F (4 deg C) and below, when 80 deg F (27 deg C) and above, and each time a set of compression test specimens is made.
4. Compression Test Specimen: ASTM C 31; one set of 6 standard cylinders for each compressive strength test, unless otherwise directed. Mold and store cylinders for laboratory-cured test specimens except when field-cure test specimens are required.
5. Compressive Strength Tests: ASTM C 39; one set for each day's pour exceeding 5 cu. yds. plus additional sets for each 50 cu. yds. more than the first 25 cu. yds. of each concrete class placed in any one day; one specimen tested at 3 days, two specimen tested at 7 days, 2 specimens tested at 28 days, and one specimen retained in reserve for later testing if required.
6. When frequency of testing will provide fewer than 5 strength tests for a given class of concrete, conduct testing from at least 5 randomly selected batches or from each batch if fewer than 5 are used.
7. When total quantity of a given class of concrete is less than 50 cu. yds., Consultant may waive strength test if adequate evidence of satisfactory strength is provided.
8. When strength of field-cured cylinders is less than 85 percent of companion laboratory-cured cylinders, evaluate current operations and provide corrective procedures for protecting and curing the in-place concrete.
9. Strength level of concrete will be considered satisfactory if averages of sets of three consecutive strength test results equal or exceed specified compressive strength, and no individual strength test result falls below specified compressive strength by more than 500 psi.

- D. Test results will be reported in writing to the Consultant, Ready-Mix Producer, and Contractor within 24 hours after tests. Reports of compressive strength tests shall contain the project identification name and number, date of concrete placement, name of concrete testing service, concrete type and class, location of concrete batch in structure, design compressive strength at 28 days, concrete mix proportions and materials, compressive breaking strength, and type of break for 7-day tests and 28-day tests.
  
- E. Nondestructive 3-day Testing: Impact hammer, sonoscope, or other nondestructive device may be permitted but shall not be used as the sole basis for acceptance or rejection.
  
- F. Additional Tests: The testing service will make additional tests of in-place concrete when test results indicate specified concrete strengths and other characteristics have not been attained in the structure, as directed by Consultant. Testing service may conduct tests to determine adequacy of concrete by cored cylinders complying with ASTM C 42, or by other methods as directed. Contractor shall pay for such tests when unacceptable concrete is verified.

**END OF SECTION**

**RFQ QUOTE PAGE (1)**

It is the intention of the Brockton Parking Authority to purchase services as previously described in the Scope of Work. The Contractor proposes to furnish all labor and materials required for the project outlined in the Scope of Work in accordance with the accompanying quote documents prepared by the Brockton Parking Authority, for the contract price specified below.

The proposed Contract Price is:

\$ Total \_\_\_\_\_

\$ \_\_\_\_\_ (written out in words)

PLEASE PROVIDE THREE (3) REFERENCES OF SIMILAR SIZE AND SCOPE PROJECTS, INCLUDING CONTACT INFORMATION:

1. \_\_\_\_\_
2. \_\_\_\_\_
3. \_\_\_\_\_

\_\_\_\_\_  
NAME OF VENDOR/CONTRACTOR,

\_\_\_\_\_  
ADDRESS (STREET, CITY, STATE, ZIP CODE)

\_\_\_\_\_  
SIGNATURE OF THE PERSON AUTHORIZED TO SIGN

\_\_\_\_\_  
DATE

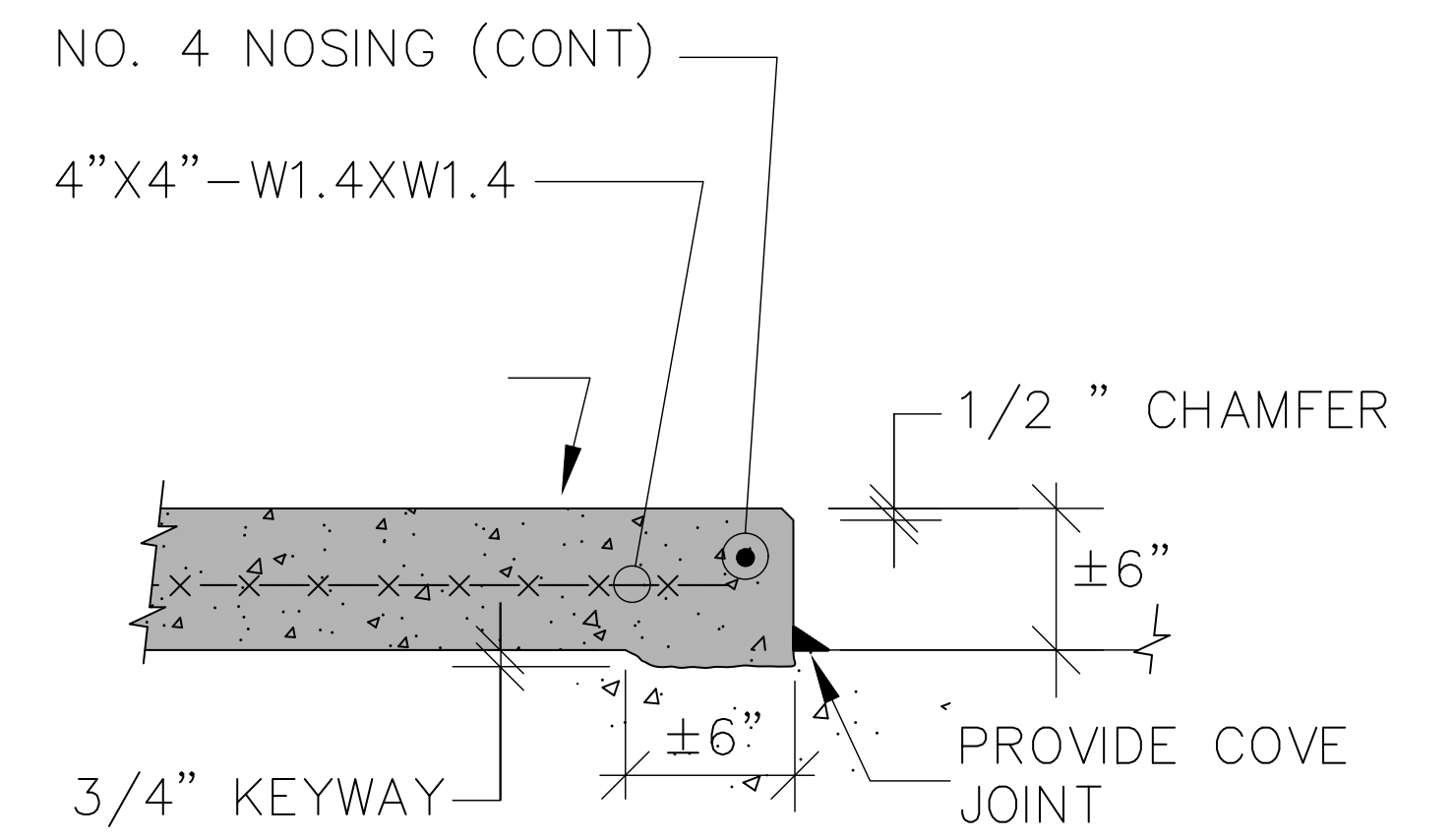
\_\_\_\_\_  
TYPE OR PRINT THE SIGNER'S NAME AND TITLE

\_\_\_\_\_  
EMAIL ADDRESS PHONE

\_\_\_\_\_  
THIS QUOTE REFLECTS ALL CHANGES/CLARIFICATIONS IN ADDENDUM(S)

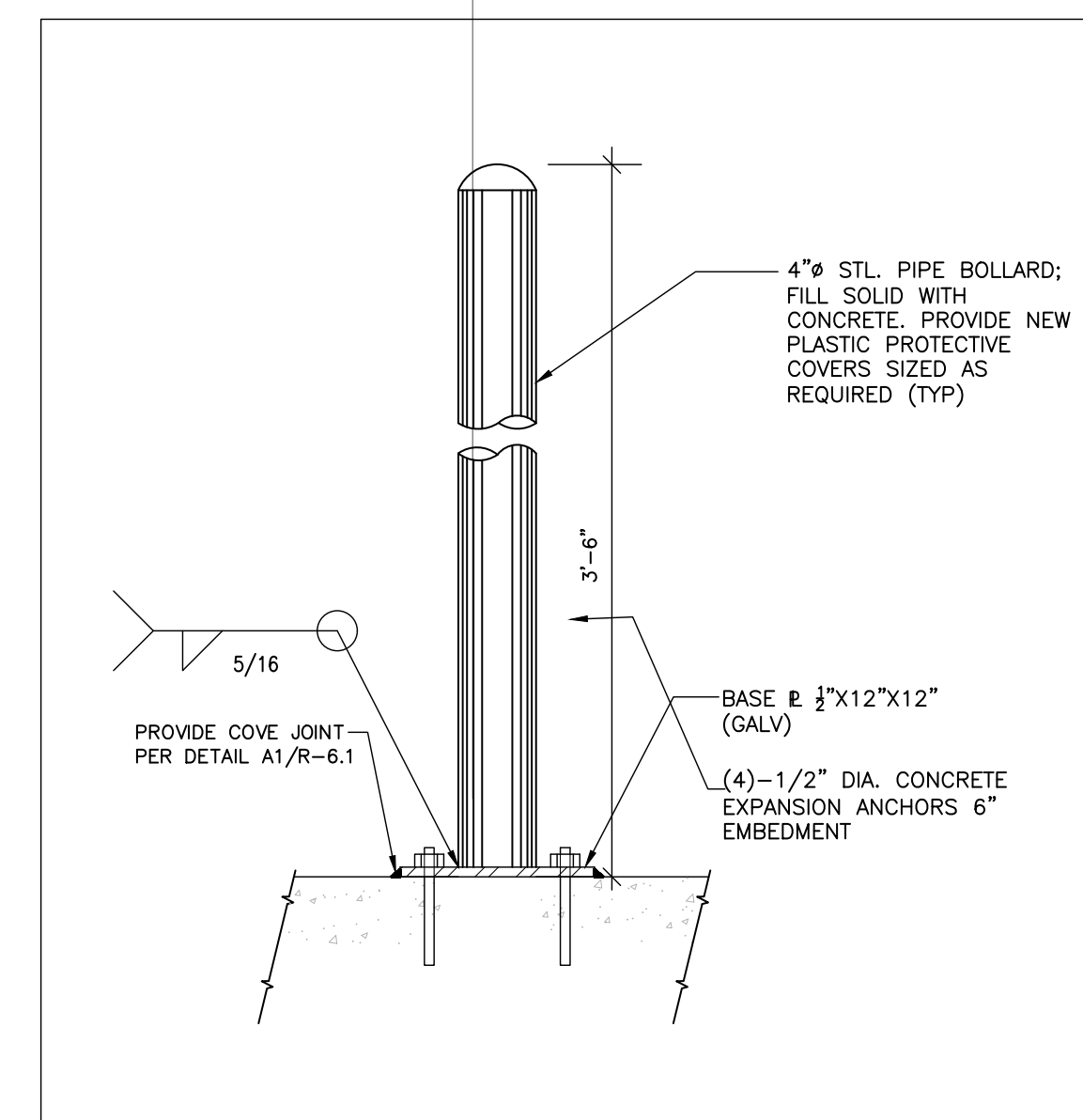
Pursuant to M.G.L. Chapter 30, Section 39s, I hereby certify, under the pains and penalties of perjury, that I am able to furnish labor in harmony with all other elements of labor employed in the work and that all employees employed on the worksite, or in work subject to the bid, have successfully completed at least 10 hours of OSHA approved training.

This is a prevailing wage job. Certified payrolls documenting compliance with the prevailing wage for labor on this job must be received in the Brockton Parking Authority, 45 School Street, Rm. B2, Brockton, MA prior to any invoices being paid.



NOTE: SURFACE SHALL BE ROUGHENED, 1/4" AMPLITUDE PRIOR TO CONCRETE PLACEMENT.

2  
PK-2 C.I.P. CURB INSTALLATION  
N.T.S.

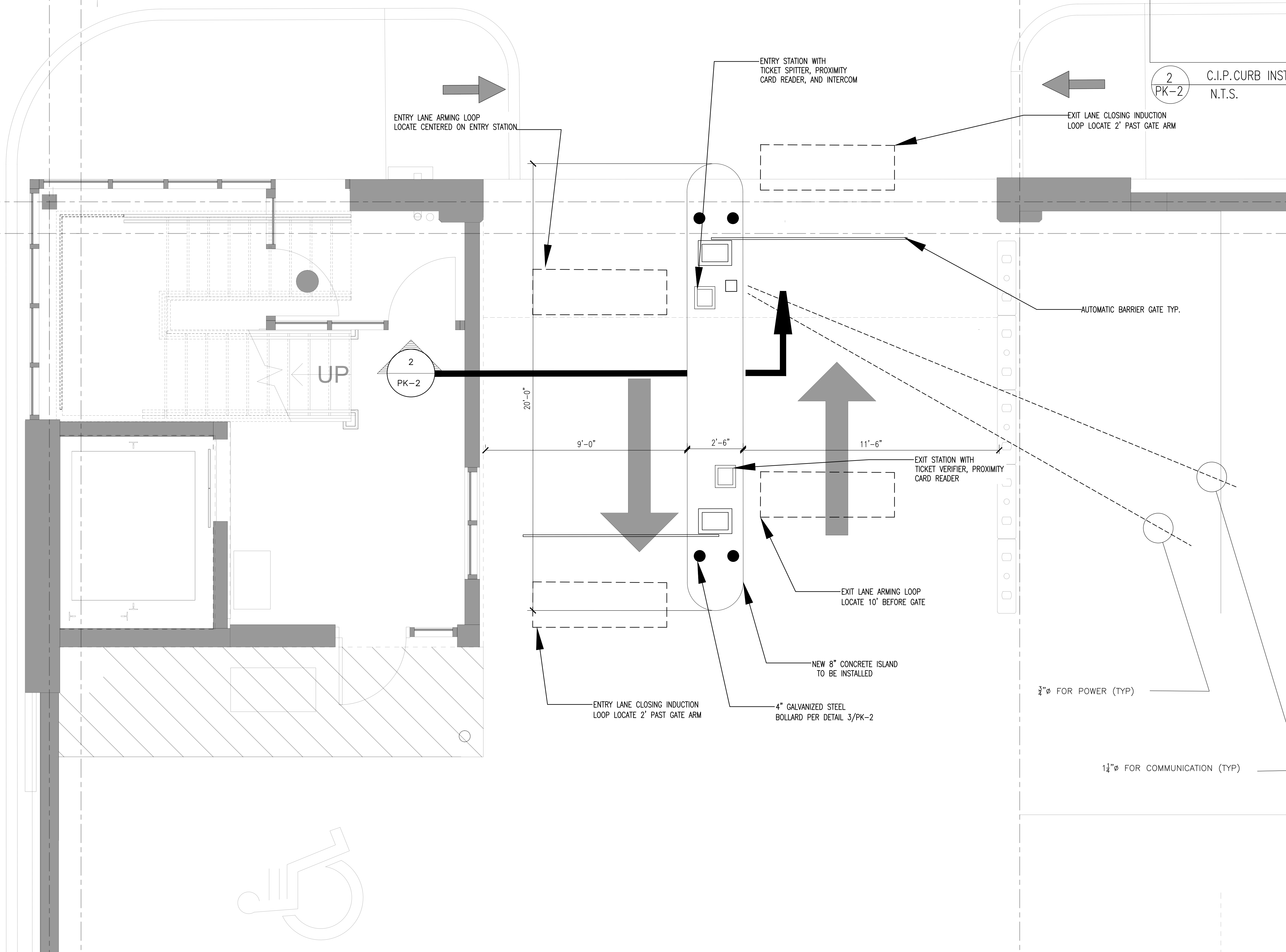


3  
PK-2 BOLLARD INSTALLATION @ CURBING  
N.T.S.

0.9 1

2

A 0.A



Copyright © 2023 DESMAN, Inc. All rights reserved. No part of these documents may be reproduced in any form or by any means without written permission from DESMAN, Inc.

NO.	DATE	DESCRIPTION

DRAWING TITLE:  
Carpenter Garage  
PARCS PLAN

DRAWING NO.  
PK-2

SCALE: 1/2"=1'-0"  
DATE: 03/07/2023  
PROJECT NO: 20-22119-3  
DES. AH | DRWN. TF | CHK'D. AH



**THE COMMONWEALTH OF MASSACHUSETTS  
EXECUTIVE OFFICE OF LABOR AND WORKFORCE DEVELOPMENT  
DEPARTMENT OF LABOR STANDARDS**

**Prevailing Wage Rates**

As determined by the Director under the provisions of the  
Massachusetts General Laws, Chapter 149, Sections 26 to 27H

MAURA HEALEY  
Governor

KIM DRISCOLL  
Lt. Governor

LAUREN JONES  
Secretary

MICHAEL FLANAGAN  
Director

**Awarding Authority:** CITY OF BROCKTON  
**Contract Number:** City/Town: BROCKTON  
**Description of Work:** TO PROCURE AN EXPERIENCED VENDOR TO CONSTRUCT A NEW CONCRETE ISLAND AT THE MAYOR BILL CARPENTER PARKING GARAGE.  
**Job Location:** 31 Petronelli way, Brockton, MA 02301

**Information about Prevailing Wage Schedules for Awarding Authorities and Contractors**

- The wage rates will remain in effect for the duration of the project, except in the case of multi-year public construction projects. For construction projects lasting longer than one year, awarding authorities must request an updated wage schedule no later than two weeks before the anniversary of the date the contract was executed by the awarding authority and the general contractor. For multi-year CM AT RISK projects, the awarding authority must request an annual update no later than two weeks before the anniversary date, determined as the earlier of: (a) the execution date of the GMP Amendment, or (b) the execution date of the first amendment to permit procurement of construction services. The annual update requirement is not applicable to 27F "rental of equipment" contracts. The updated wage schedule must be provided to all contractors, including general and sub-contractors, working on the construction project.
- This wage schedule applies only to the specific project referenced at the top of this page and uniquely identified by the "Wage Request Number" on all pages of this schedule.
- An Awarding Authority must request an updated wage schedule if it has not opened bids or selected a contractor within 90 days of the date of issuance of the wage schedule. For CM AT RISK projects (bid pursuant to G.L. c.149A), the earlier of: (a) the execution date of the GMP Amendment, or (b) the bid for the first construction scope of work must be within 90-days of the wage schedule issuance date.
- The wage schedule shall be incorporated in any advertisement or call for bids for the project as required by M.G.L. c. 149, § 27. The wage schedule shall be made a part of the contract awarded for the project. The wage schedule must be posted in a conspicuous place at the work site for the life of the project in accordance with M.G.L. c. 149 § 27. The wages listed on the wage schedule must be paid to employees performing construction work on the project whether they are employed by the prime contractor, a filed sub-bidder, or a sub-contractor.
- Apprentices working on the project are required to be registered with the Massachusetts Division of Apprentice Standards (DAS). Apprentices must keep their apprentice identification card on their persons during all work hours on the project. An apprentice registered with DAS may be paid the lower apprentice wage rate at the applicable step as provided on the prevailing wage schedule. **Any apprentice not registered with DAS regardless of whether they are registered with another federal, state, local, or private agency must be paid the journeyworker's rate.**
- Every contractor or subcontractor working on the construction project must submit weekly payroll reports and a Statement of Compliance directly to the awarding authority by mail or email and keep them on file for three years. Each weekly payroll report must contain: the employee's name, address, occupational classification, hours worked, and wages paid. Do not submit weekly payroll reports to DLS. For a sample payroll reporting form go to <http://www.mass.gov/dols/pw>.
- Contractors with questions about the wage rates or classifications included on the wage schedule have an affirmative obligation to inquire with DLS at (617) 626-6953.
- Contractors must obtain the wage schedules from awarding authorities. Failure of a contractor or subcontractor to pay the prevailing wage rates listed on the wage schedule to all employees who perform construction work on the project is a violation of the law and subjects the contractor or subcontractor to civil and criminal penalties.
- Employees not receiving the prevailing wage rate set forth on the wage schedule may file a complaint with the Fair Labor Division of the office of the Attorney General at (617) 727-3465.

Classification	Effective Date	Base Wage	Health	Pension	Supplemental Unemployment	Total Rate
<b>Construction</b>						
(2 AXLE) DRIVER - EQUIPMENT <i>TEAMSTERS JOINT COUNCIL NO. 10 ZONE B</i>	12/01/2021	\$35.95	\$13.41	\$16.01	\$0.00	\$65.37
(3 AXLE) DRIVER - EQUIPMENT <i>TEAMSTERS JOINT COUNCIL NO. 10 ZONE B</i>	12/01/2021	\$36.02	\$13.41	\$16.01	\$0.00	\$65.44
(4 & 5 AXLE) DRIVER - EQUIPMENT <i>TEAMSTERS JOINT COUNCIL NO. 10 ZONE B</i>	12/01/2021	\$36.14	\$13.41	\$16.01	\$0.00	\$65.56
ADS/SUBMERSIBLE PILOT <i>PILE DRIVER LOCAL 56 (ZONE 1)</i>	08/01/2020	\$103.05	\$9.40	\$23.12	\$0.00	\$135.57
For apprentice rates see "Apprentice- PILE DRIVER"						
AIR TRACK OPERATOR <i>LABORERS - ZONE 2</i>	12/01/2022	\$37.91	\$9.10	\$16.64	\$0.00	\$63.65
	06/01/2023	\$38.21	\$9.40	\$16.89	\$0.00	\$64.50
	12/01/2023	\$39.11	\$9.40	\$16.89	\$0.00	\$65.40
For apprentice rates see "Apprentice- LABORER"						
AIR TRACK OPERATOR (HEAVY & HIGHWAY) <i>LABORERS - ZONE 2 (HEAVY &amp; HIGHWAY)</i>	12/01/2022	\$37.31	\$9.35	\$16.89	\$0.00	\$63.55
	06/01/2023	\$38.21	\$9.40	\$16.89	\$0.00	\$64.50
	12/01/2023	\$39.11	\$9.40	\$16.89	\$0.00	\$65.40
	06/01/2024	\$40.44	\$9.40	\$16.89	\$0.00	\$66.73
	12/01/2024	\$41.77	\$9.40	\$16.89	\$0.00	\$68.06
	06/01/2025	\$43.16	\$9.40	\$16.89	\$0.00	\$69.45
	12/01/2025	\$44.54	\$9.40	\$16.89	\$0.00	\$70.83
	06/01/2026	\$45.98	\$9.40	\$16.89	\$0.00	\$72.27
	12/01/2026	\$47.42	\$9.40	\$16.89	\$0.00	\$73.71
For apprentice rates see "Apprentice- LABORER (Heavy and Highway)"						
ASBESTOS REMOVER - PIPE / MECH. EQUIPT. <i>HEAT &amp; FROST INSULATORS LOCAL 6 (BOSTON)</i>	12/01/2020	\$38.10	\$12.80	\$9.45	\$0.00	\$60.35
ASPHALT RAKER <i>LABORERS - ZONE 2</i>	12/01/2022	\$37.41	\$9.10	\$16.64	\$0.00	\$63.15
	06/01/2023	\$37.71	\$9.40	\$16.89	\$0.00	\$64.00
	12/01/2023	\$38.61	\$9.40	\$16.89	\$0.00	\$64.90
For apprentice rates see "Apprentice- LABORER"						
ASPHALT RAKER (HEAVY & HIGHWAY) <i>LABORERS - ZONE 2 (HEAVY &amp; HIGHWAY)</i>	12/01/2022	\$36.81	\$9.35	\$16.89	\$0.00	\$63.05
	06/01/2023	\$37.71	\$9.40	\$16.89	\$0.00	\$64.00
	12/01/2023	\$38.61	\$9.40	\$16.89	\$0.00	\$64.90
	06/01/2024	\$39.94	\$9.40	\$16.89	\$0.00	\$66.23
	12/01/2024	\$41.27	\$9.40	\$16.89	\$0.00	\$67.56
	06/01/2025	\$42.66	\$9.40	\$16.89	\$0.00	\$68.95
	12/01/2025	\$44.04	\$9.40	\$16.89	\$0.00	\$70.33
	06/01/2026	\$45.48	\$9.40	\$16.89	\$0.00	\$71.77
	12/01/2026	\$46.92	\$9.40	\$16.89	\$0.00	\$73.21
For apprentice rates see "Apprentice- LABORER (Heavy and Highway)"						

Classification	Effective Date	Base Wage	Health	Pension	Supplemental Unemployment	Total Rate
ASPHALT/CONCRETE/CRUSHER PLANT-ON SITE <i>OPERATING ENGINEERS LOCAL 4</i>	12/01/2022	\$53.63	\$14.25	\$16.05	\$0.00	\$83.93
	06/01/2023	\$54.88	\$14.25	\$16.05	\$0.00	\$85.18
	12/01/2023	\$56.13	\$14.25	\$16.05	\$0.00	\$86.43
	06/01/2024	\$57.43	\$14.25	\$16.05	\$0.00	\$87.73
	12/01/2024	\$58.88	\$14.25	\$16.05	\$0.00	\$89.18
	06/01/2025	\$60.18	\$14.25	\$16.05	\$0.00	\$90.48
	12/01/2025	\$61.63	\$14.25	\$16.05	\$0.00	\$91.93
	06/01/2026	\$62.93	\$14.25	\$16.05	\$0.00	\$93.23
	12/01/2026	\$64.38	\$14.25	\$16.05	\$0.00	\$94.68
For apprentice rates see "Apprentice- OPERATING ENGINEERS"						
BACKHOE/FRONT-END LOADER <i>OPERATING ENGINEERS LOCAL 4</i>	12/01/2022	\$53.63	\$14.25	\$16.05	\$0.00	\$83.93
	06/01/2023	\$54.88	\$14.25	\$16.05	\$0.00	\$85.18
	12/01/2023	\$56.13	\$14.25	\$16.05	\$0.00	\$86.43
	06/01/2024	\$57.43	\$14.25	\$16.05	\$0.00	\$87.73
	12/01/2024	\$58.88	\$14.25	\$16.05	\$0.00	\$89.18
	06/01/2025	\$60.18	\$14.25	\$16.05	\$0.00	\$90.48
	12/01/2025	\$61.63	\$14.25	\$16.05	\$0.00	\$91.93
	06/01/2026	\$62.93	\$14.25	\$16.05	\$0.00	\$93.23
	12/01/2026	\$64.38	\$14.25	\$16.05	\$0.00	\$94.68
For apprentice rates see "Apprentice- OPERATING ENGINEERS"						
BARCO-TYPE JUMPING TAMPER <i>LABORERS - ZONE 2</i>	12/01/2022	\$37.41	\$9.10	\$16.64	\$0.00	\$63.15
	06/01/2023	\$37.71	\$9.40	\$16.89	\$0.00	\$64.00
	12/01/2023	\$38.61	\$9.40	\$16.89	\$0.00	\$64.90
For apprentice rates see "Apprentice- LABORER"						
BLOCK PAVER, RAMMER / CURB SETTER <i>LABORERS - ZONE 2</i>	12/01/2022	\$37.91	\$9.10	\$16.64	\$0.00	\$63.65
	06/01/2023	\$38.21	\$9.40	\$16.89	\$0.00	\$64.50
	12/01/2023	\$39.11	\$9.40	\$16.89	\$0.00	\$65.40
For apprentice rates see "Apprentice- LABORER"						
BLOCK PAVER, RAMMER / CURB SETTER (HEAVY & HIGHWAY) <i>LABORERS - ZONE 2 (HEAVY &amp; HIGHWAY)</i>	12/01/2022	\$37.31	\$9.35	\$16.89	\$0.00	\$63.55
	06/01/2023	\$38.21	\$9.40	\$16.89	\$0.00	\$64.50
	12/01/2023	\$39.11	\$9.40	\$16.89	\$0.00	\$65.40
	06/01/2024	\$40.44	\$9.40	\$16.89	\$0.00	\$66.73
	12/01/2024	\$41.77	\$9.40	\$16.89	\$0.00	\$68.06
	06/01/2025	\$43.16	\$9.40	\$16.89	\$0.00	\$69.45
	12/01/2025	\$44.54	\$9.40	\$16.89	\$0.00	\$70.83
	06/01/2026	\$45.98	\$9.40	\$16.89	\$0.00	\$72.27
	12/01/2026	\$47.42	\$9.40	\$16.89	\$0.00	\$73.71
For apprentice rates see "Apprentice- LABORER (Heavy and Highway)"						
BOILER MAKER <i>BOILERMAKERS LOCAL 29</i>	01/01/2023	\$47.37	\$7.07	\$20.31	\$0.00	\$74.75
	01/01/2024	\$48.12	\$7.07	\$20.60	\$0.00	\$75.79

Classification

Effective Date Base Wage Health Pension Supplemental Unemployment Total Rate

Apprentice - BOILERMAKER - Local 29

Effective Date - 01/01/2023

Step	percent	Apprentice Base Wage	Health	Pension	Supplemental Unemployment	Total Rate
1	65	\$30.79	\$7.07	\$13.22	\$0.00	\$51.08
2	65	\$30.79	\$7.07	\$13.22	\$0.00	\$51.08
3	70	\$33.16	\$7.07	\$14.23	\$0.00	\$54.46
4	75	\$35.53	\$7.07	\$15.24	\$0.00	\$57.84
5	80	\$37.90	\$7.07	\$16.25	\$0.00	\$61.22
6	85	\$40.26	\$7.07	\$17.28	\$0.00	\$64.61
7	90	\$42.63	\$7.07	\$18.28	\$0.00	\$67.98
8	95	\$45.00	\$7.07	\$19.32	\$0.00	\$71.39

Effective Date - 01/01/2024

Step	percent	Apprentice Base Wage	Health	Pension	Supplemental Unemployment	Total Rate
1	65	\$31.28	\$7.07	\$13.22	\$0.00	\$51.57
2	65	\$31.28	\$7.07	\$13.22	\$0.00	\$51.57
3	70	\$33.68	\$7.07	\$14.23	\$0.00	\$54.98
4	75	\$36.09	\$7.07	\$15.24	\$0.00	\$58.40
5	80	\$38.50	\$7.07	\$16.25	\$0.00	\$61.82
6	85	\$40.90	\$7.07	\$17.28	\$0.00	\$65.25
7	90	\$43.31	\$7.07	\$18.28	\$0.00	\$68.66
8	95	\$45.71	\$7.07	\$19.32	\$0.00	\$72.10

Notes:

Apprentice to Journeyworker Ratio:1:4

BRICK/STONE/ARTIFICIAL MASONRY (INCL. MASONRY WATERPROOFING)	02/01/2023	\$60.35	\$11.49	\$22.34	\$0.00	\$94.18
BRICKLAYERS LOCAL 3 (QUINCY)	08/01/2023	\$62.40	\$11.49	\$22.34	\$0.00	\$96.23
	02/01/2024	\$63.65	\$11.49	\$22.34	\$0.00	\$97.48
	08/01/2024	\$65.75	\$11.49	\$22.34	\$0.00	\$99.58
	02/01/2025	\$67.05	\$11.49	\$22.34	\$0.00	\$100.88
	08/01/2025	\$69.20	\$11.49	\$22.34	\$0.00	\$103.03
	02/01/2026	\$70.55	\$11.49	\$22.34	\$0.00	\$104.38
	08/01/2026	\$72.75	\$11.49	\$22.34	\$0.00	\$106.58
	02/01/2027	\$74.15	\$11.49	\$22.34	\$0.00	\$107.98



Apprentice - BRICK/PLASTER/CEMENT MASON - Local 3 Quincy

Effective Date - 02/01/2023

Step	percent	Apprentice Base Wage	Health	Pension	Supplemental Unemployment	Total Rate
1	50	\$30.18	\$11.49	\$22.34	\$0.00	\$64.01
2	60	\$36.21	\$11.49	\$22.34	\$0.00	\$70.04
3	70	\$42.25	\$11.49	\$22.34	\$0.00	\$76.08
4	80	\$48.28	\$11.49	\$22.34	\$0.00	\$82.11
5	90	\$54.32	\$11.49	\$22.34	\$0.00	\$88.15

Effective Date - 08/01/2023

Step	percent	Apprentice Base Wage	Health	Pension	Supplemental Unemployment	Total Rate
1	50	\$31.20	\$11.49	\$22.34	\$0.00	\$65.03
2	60	\$37.44	\$11.49	\$22.34	\$0.00	\$71.27
3	70	\$43.68	\$11.49	\$22.34	\$0.00	\$77.51
4	80	\$49.92	\$11.49	\$22.34	\$0.00	\$83.75
5	90	\$56.16	\$11.49	\$22.34	\$0.00	\$89.99

Notes:

Apprentice to Journeyworker Ratio:1:5

BULLDOZER/GRADER/SCRAPER	12/01/2022	\$53.05	\$14.25	\$16.05	\$0.00	\$83.35
OPERATING ENGINEERS LOCAL 4	06/01/2023	\$54.29	\$14.25	\$16.05	\$0.00	\$84.59
	12/01/2023	\$55.53	\$14.25	\$16.05	\$0.00	\$85.83
	06/01/2024	\$56.81	\$14.25	\$16.05	\$0.00	\$87.11
	12/01/2024	\$58.25	\$14.25	\$16.05	\$0.00	\$88.55
	06/01/2025	\$59.53	\$14.25	\$16.05	\$0.00	\$89.83
	12/01/2025	\$60.97	\$14.25	\$16.05	\$0.00	\$91.27
	06/01/2026	\$62.25	\$14.25	\$16.05	\$0.00	\$92.55
	12/01/2026	\$63.69	\$14.25	\$16.05	\$0.00	\$93.99

For apprentice rates see "Apprentice- OPERATING ENGINEERS"

CAISSON & UNDERPINNING BOTTOM MAN	12/01/2022	\$43.73	\$9.35	\$17.97	\$0.00	\$71.05
LABORERS - FOUNDATION AND MARINE	06/01/2023	\$44.73	\$9.40	\$17.97	\$0.00	\$72.10
	12/01/2023	\$45.98	\$9.40	\$17.97	\$0.00	\$73.35
	06/01/2024	\$47.46	\$9.40	\$17.97	\$0.00	\$74.83
	12/01/2024	\$48.93	\$9.40	\$17.97	\$0.00	\$76.30
	06/01/2025	\$50.43	\$9.40	\$17.97	\$0.00	\$77.80
	12/01/2025	\$51.93	\$9.40	\$17.97	\$0.00	\$79.30
	06/01/2026	\$53.48	\$9.40	\$17.97	\$0.00	\$80.85
	12/01/2026	\$54.98	\$9.40	\$17.97	\$0.00	\$82.35

For apprentice rates see "Apprentice- LABORER"

Classification	Effective Date	Base Wage	Health	Pension	Supplemental Unemployment	Total Rate
CAISSON & UNDERPINNING LABORER <i>LABORERS - FOUNDATION AND MARINE</i>	12/01/2022	\$42.58	\$9.35	\$17.97	\$0.00	\$69.90
	06/01/2023	\$43.58	\$9.40	\$17.97	\$0.00	\$70.95
	12/01/2023	\$44.83	\$9.40	\$17.97	\$0.00	\$72.20
	06/01/2024	\$46.31	\$9.40	\$17.97	\$0.00	\$73.68
	12/01/2024	\$47.78	\$9.40	\$17.97	\$0.00	\$75.15
	06/01/2025	\$49.28	\$9.40	\$17.97	\$0.00	\$76.65
	12/01/2025	\$50.78	\$9.40	\$17.97	\$0.00	\$78.15
	06/01/2026	\$52.33	\$9.40	\$17.97	\$0.00	\$79.70
	12/01/2026	\$53.83	\$9.40	\$17.97	\$0.00	\$81.20
For apprentice rates see "Apprentice- LABORER"						
CAISSON & UNDERPINNING TOP MAN <i>LABORERS - FOUNDATION AND MARINE</i>	12/01/2022	\$42.58	\$9.35	\$17.97	\$0.00	\$69.90
	06/01/2023	\$43.58	\$9.40	\$17.97	\$0.00	\$70.95
	12/01/2023	\$44.83	\$9.40	\$17.97	\$0.00	\$72.20
	06/01/2024	\$46.31	\$9.40	\$17.97	\$0.00	\$73.68
	12/01/2024	\$47.78	\$9.40	\$17.97	\$0.00	\$75.15
	06/01/2025	\$49.28	\$9.40	\$17.97	\$0.00	\$76.65
	12/01/2025	\$50.78	\$9.40	\$17.97	\$0.00	\$78.15
	06/01/2026	\$52.33	\$9.40	\$17.97	\$0.00	\$79.70
	12/01/2026	\$53.83	\$9.40	\$17.97	\$0.00	\$81.20
For apprentice rates see "Apprentice- LABORER"						
CARBIDE CORE DRILL OPERATOR <i>LABORERS - ZONE 2</i>	12/01/2022	\$37.41	\$9.10	\$16.64	\$0.00	\$63.15
	06/01/2023	\$37.71	\$9.40	\$16.89	\$0.00	\$64.00
	12/01/2023	\$38.61	\$9.40	\$16.89	\$0.00	\$64.90
For apprentice rates see "Apprentice- LABORER"						
CARPENTER <i>CARPENTERS -ZONE 2 (Eastern Massachusetts)</i>	03/01/2023	\$45.12	\$9.33	\$19.97	\$0.00	\$74.42

**Apprentice - CARPENTER - Zone 2 Eastern MA**

Effective Date - 03/01/2023

Step	percent	Apprentice Base Wage	Health	Pension	Supplemental Unemployment	Total Rate
1	50	\$22.56	\$9.33	\$1.73	\$0.00	\$33.62
2	60	\$27.07	\$9.33	\$1.73	\$0.00	\$38.13
3	70	\$31.58	\$9.33	\$14.78	\$0.00	\$55.69
4	75	\$33.84	\$9.33	\$14.78	\$0.00	\$57.95
5	80	\$36.10	\$9.33	\$16.51	\$0.00	\$61.94
6	80	\$36.10	\$9.33	\$16.51	\$0.00	\$61.94
7	90	\$40.61	\$9.33	\$18.24	\$0.00	\$68.18
8	90	\$40.61	\$9.33	\$18.24	\$0.00	\$68.18

**Notes:**

% Indentured After 10/1/17; 45/45/55/55/70/70/80/80  
Step 1&2 \$30.71/ 3&4 \$36.93/ 5&6 \$56.82/ 7&8 \$63.06

**Apprentice to Journeyworker Ratio:1:5**

CARPENTER WOOD FRAME <i>CARPENTERS-ZONE 3 (Wood Frame)</i>	04/01/2023	\$24.16	\$7.21	\$4.80	\$0.00	\$36.17
All Aspects of New Wood Frame Work						

**Apprentice - CARPENTER (Wood Frame) - Zone 3**

Effective Date - 04/01/2023

Step	percent	Apprentice Base Wage	Health	Pension	Supplemental Unemployment	Total Rate
1	60	\$14.50	\$7.21	\$0.00	\$0.00	\$21.71
2	60	\$14.50	\$7.21	\$0.00	\$0.00	\$21.71
3	65	\$15.70	\$7.21	\$0.00	\$0.00	\$22.91
4	70	\$16.91	\$7.21	\$0.00	\$0.00	\$24.12
5	75	\$18.12	\$7.21	\$3.80	\$0.00	\$29.13
6	80	\$19.33	\$7.21	\$3.80	\$0.00	\$30.34
7	85	\$20.54	\$7.21	\$3.80	\$0.00	\$31.55
8	90	\$21.74	\$7.21	\$3.80	\$0.00	\$32.75

**Notes:**

% Indentured After 10/1/17; 45/45/55/55/70/70/80/80  
 Step 1&2 \$17.86/ 3&4 \$20.22/ 5&6 \$27.57/ 7&8 \$29.94

**Apprentice to Journeyworker Ratio:1:5**

CEMENT MASONRY/PLASTERING	01/01/2023	\$49.45	\$12.75	\$22.74	\$0.87	\$85.81
BRICKLAYERS LOCAL 3 (QUINCY)	07/01/2023	\$50.59	\$12.75	\$22.74	\$0.87	\$86.95
	01/01/2024	\$51.73	\$12.75	\$22.74	\$0.87	\$88.09

Classification

Effective Date Base Wage Health Pension Supplemental Unemployment Total Rate

Apprentice - CEMENT MASONRY/PLASTERING - Eastern Mass (Quincy)

Effective Date - 01/01/2023

Step	percent	Apprentice Base Wage	Health	Pension	Supplemental Unemployment	Total Rate
1	50	\$24.73	\$12.75	\$15.49	\$0.00	\$52.97
2	60	\$29.67	\$12.75	\$17.99	\$0.87	\$61.28
3	65	\$32.14	\$12.75	\$18.99	\$0.87	\$64.75
4	70	\$34.62	\$12.75	\$19.99	\$0.87	\$68.23
5	75	\$37.09	\$12.75	\$20.99	\$0.87	\$71.70
6	80	\$39.56	\$12.75	\$21.99	\$0.87	\$75.17
7	90	\$44.51	\$12.75	\$22.99	\$0.87	\$81.12

Effective Date - 07/01/2023

Step	percent	Apprentice Base Wage	Health	Pension	Supplemental Unemployment	Total Rate
1	50	\$25.30	\$12.75	\$15.49	\$0.00	\$53.54
2	60	\$30.35	\$12.75	\$17.99	\$0.87	\$61.96
3	65	\$32.88	\$12.75	\$18.99	\$0.87	\$65.49
4	70	\$35.41	\$12.75	\$19.99	\$0.87	\$69.02
5	75	\$37.94	\$12.75	\$20.99	\$0.87	\$72.55
6	80	\$40.47	\$12.75	\$21.99	\$0.87	\$76.08
7	90	\$45.53	\$12.75	\$22.99	\$0.87	\$82.14

Notes:

Steps 3,4 are 500 hrs. All other steps are 1,000 hrs.

Apprentice to Journeyworker Ratio:1:3

CHAIN SAW OPERATOR	12/01/2022	\$37.41	\$9.10	\$16.64	\$0.00	\$63.15
LABORERS - ZONE 2	06/01/2023	\$37.71	\$9.40	\$16.89	\$0.00	\$64.00
	12/01/2023	\$38.61	\$9.40	\$16.89	\$0.00	\$64.90

For apprentice rates see "Apprentice- LABORER"

CLAM SHELLS/SLURRY BUCKETS/HEADING MACHINES	12/01/2022	\$54.68	\$14.25	\$16.05	\$0.00	\$84.98
OPERATING ENGINEERS LOCAL 4	06/01/2023	\$55.95	\$14.25	\$16.05	\$0.00	\$86.25
	12/01/2023	\$57.23	\$14.25	\$16.05	\$0.00	\$87.53
	06/01/2024	\$58.55	\$14.25	\$16.05	\$0.00	\$88.85
	12/01/2024	\$60.03	\$14.25	\$16.05	\$0.00	\$90.33
	06/01/2025	\$61.36	\$14.25	\$16.05	\$0.00	\$91.66
	12/01/2025	\$62.83	\$14.25	\$16.05	\$0.00	\$93.13
	06/01/2026	\$64.16	\$14.25	\$16.05	\$0.00	\$94.46
	12/01/2026	\$65.64	\$14.25	\$16.05	\$0.00	\$95.94

For apprentice rates see "Apprentice- OPERATING ENGINEERS"

Classification	Effective Date	Base Wage	Health	Pension	Supplemental Unemployment	Total Rate
COMPRESSOR OPERATOR OPERATING ENGINEERS LOCAL 4	12/01/2022	\$35.08	\$14.25	\$16.05	\$0.00	\$65.38
	06/01/2023	\$35.90	\$14.25	\$16.05	\$0.00	\$66.20
	12/01/2023	\$36.72	\$14.25	\$16.05	\$0.00	\$67.02
	06/01/2024	\$37.57	\$14.25	\$16.05	\$0.00	\$67.87
	12/01/2024	\$38.52	\$14.25	\$16.05	\$0.00	\$68.82
	06/01/2025	\$39.37	\$14.25	\$16.05	\$0.00	\$69.67
	12/01/2025	\$40.32	\$14.25	\$16.05	\$0.00	\$70.62
	06/01/2026	\$41.18	\$14.25	\$16.05	\$0.00	\$71.48
	12/01/2026	\$42.13	\$14.25	\$16.05	\$0.00	\$72.43

For apprentice rates see "Apprentice- OPERATING ENGINEERS"

DELEADER (BRIDGE) PAINTERS LOCAL 35 - ZONE 2	01/01/2023	\$56.06	\$8.65	\$23.05	\$0.00	\$87.76
	07/01/2023	\$57.26	\$8.65	\$23.05	\$0.00	\$88.96
	01/01/2024	\$58.46	\$8.65	\$23.05	\$0.00	\$90.16
	07/01/2024	\$59.66	\$8.65	\$23.05	\$0.00	\$91.36
	01/01/2025	\$60.86	\$8.65	\$23.05	\$0.00	\$92.56

**Apprentice - PAINTER Local 35 - BRIDGES/TANKS**

Effective Date - 01/01/2023

Step	percent	Apprentice Base Wage	Health	Pension	Supplemental Unemployment	Total Rate
1	50	\$28.03	\$8.65	\$0.00	\$0.00	\$36.68
2	55	\$30.83	\$8.65	\$6.27	\$0.00	\$45.75
3	60	\$33.64	\$8.65	\$6.84	\$0.00	\$49.13
4	65	\$36.44	\$8.65	\$7.41	\$0.00	\$52.50
5	70	\$39.24	\$8.65	\$19.63	\$0.00	\$67.52
6	75	\$42.05	\$8.65	\$20.20	\$0.00	\$70.90
7	80	\$44.85	\$8.65	\$20.77	\$0.00	\$74.27
8	90	\$50.45	\$8.65	\$21.91	\$0.00	\$81.01

Effective Date - 07/01/2023

Step	percent	Apprentice Base Wage	Health	Pension	Supplemental Unemployment	Total Rate
1	50	\$28.63	\$8.65	\$0.00	\$0.00	\$37.28
2	55	\$31.49	\$8.65	\$6.27	\$0.00	\$46.41
3	60	\$34.36	\$8.65	\$6.84	\$0.00	\$49.85
4	65	\$37.22	\$8.65	\$7.41	\$0.00	\$53.28
5	70	\$40.08	\$8.65	\$19.63	\$0.00	\$68.36
6	75	\$42.95	\$8.65	\$20.20	\$0.00	\$71.80
7	80	\$45.81	\$8.65	\$20.77	\$0.00	\$75.23
8	90	\$51.53	\$8.65	\$21.91	\$0.00	\$82.09

**Notes:**

Steps are 750 hrs.

**Apprentice to Journeyworker Ratio:1:1**

DEMO: ADZEMAN LABORERS - ZONE 2	12/01/2022	\$43.33	\$9.10	\$17.57	\$0.00	\$70.00
	06/01/2023	\$43.73	\$9.40	\$17.82	\$0.00	\$70.95
	12/01/2023	\$44.98	\$9.40	\$17.82	\$0.00	\$72.20

Classification	Effective Date	Base Wage	Health	Pension	Supplemental Unemployment	Total Rate
For apprentice rates see "Apprentice- LABORER"						
DEMO: BACKHOE/LOADER/HAMMER OPERATOR LABORERS - ZONE 2	12/01/2022	\$44.33	\$9.10	\$17.57	\$0.00	\$71.00
	06/01/2023	\$44.73	\$9.40	\$17.82	\$0.00	\$71.95
	12/01/2023	\$45.98	\$9.40	\$17.82	\$0.00	\$73.20
For apprentice rates see "Apprentice- LABORER"						
DEMO: BURNERS LABORERS - ZONE 2	12/01/2022	\$44.08	\$9.10	\$17.57	\$0.00	\$70.75
	06/01/2023	\$44.48	\$9.40	\$17.82	\$0.00	\$71.70
	12/01/2023	\$45.73	\$9.40	\$17.82	\$0.00	\$72.95
For apprentice rates see "Apprentice- LABORER"						
DEMO: CONCRETE CUTTER/SAWYER LABORERS - ZONE 2	12/01/2022	\$44.33	\$9.10	\$17.57	\$0.00	\$71.00
	06/01/2023	\$44.73	\$9.40	\$17.82	\$0.00	\$71.95
	12/01/2023	\$45.98	\$9.40	\$17.82	\$0.00	\$73.20
For apprentice rates see "Apprentice- LABORER"						
DEMO: JACKHAMMER OPERATOR LABORERS - ZONE 2	12/01/2022	\$44.08	\$9.10	\$17.57	\$0.00	\$70.75
	06/01/2023	\$44.48	\$9.40	\$17.82	\$0.00	\$71.70
	12/01/2023	\$45.73	\$9.40	\$17.82	\$0.00	\$72.95
For apprentice rates see "Apprentice- LABORER"						
DEMO: WRECKING LABORER LABORERS - ZONE 2	12/01/2022	\$43.33	\$9.10	\$17.57	\$0.00	\$70.00
	06/01/2023	\$43.73	\$9.40	\$17.82	\$0.00	\$70.95
	12/01/2023	\$44.98	\$9.40	\$17.82	\$0.00	\$72.20
For apprentice rates see "Apprentice- LABORER"						
DIRECTIONAL DRILL MACHINE OPERATOR OPERATING ENGINEERS LOCAL 4	12/01/2022	\$53.05	\$14.25	\$16.05	\$0.00	\$83.35
	06/01/2023	\$54.29	\$14.25	\$16.05	\$0.00	\$84.59
	12/01/2023	\$55.53	\$14.25	\$16.05	\$0.00	\$85.83
	06/01/2024	\$56.81	\$14.25	\$16.05	\$0.00	\$87.11
	12/01/2024	\$58.25	\$14.25	\$16.05	\$0.00	\$88.55
	06/01/2025	\$59.53	\$14.25	\$16.05	\$0.00	\$89.83
	12/01/2025	\$60.97	\$14.25	\$16.05	\$0.00	\$91.27
	06/01/2026	\$62.25	\$14.25	\$16.05	\$0.00	\$92.55
	12/01/2026	\$63.69	\$14.25	\$16.05	\$0.00	\$93.99
For apprentice rates see "Apprentice- OPERATING ENGINEERS"						
DIVER PILE DRIVER LOCAL 56 (ZONE 1)	08/01/2020	\$68.70	\$9.40	\$23.12	\$0.00	\$101.22
For apprentice rates see "Apprentice- PILE DRIVER"						
DIVER TENDER PILE DRIVER LOCAL 56 (ZONE 1)	08/01/2020	\$49.07	\$9.40	\$23.12	\$0.00	\$81.59
For apprentice rates see "Apprentice- PILE DRIVER"						
DIVER TENDER (EFFLUENT) PILE DRIVER LOCAL 56 (ZONE 1)	08/01/2020	\$73.60	\$9.40	\$23.12	\$0.00	\$106.12
For apprentice rates see "Apprentice- PILE DRIVER"						
DIVER/SLURRY (EFFLUENT) PILE DRIVER LOCAL 56 (ZONE 1)	08/01/2020	\$103.05	\$9.40	\$23.12	\$0.00	\$135.57
For apprentice rates see "Apprentice- PILE DRIVER"						
DRAWBRIDGE OPERATOR (Construction) DRAWBRIDGE - SEJU LOCAL 888	07/01/2020	\$26.77	\$6.67	\$3.93	\$0.16	\$37.53
For apprentice rates see "Apprentice- PILE DRIVER"						
ELECTRICIAN ELECTRICIANS LOCAL 223	09/01/2022	\$46.35	\$11.50	\$16.18	\$0.00	\$74.03
	09/01/2023	\$47.87	\$11.75	\$16.86	\$0.00	\$76.48

**Apprentice - ELECTRICIAN - Local 223**

Effective Date - 09/01/2022

Step	percent	Apprentice Base Wage	Health	Pension	Supplemental Unemployment	Total Rate
1	40	\$18.54	\$11.50	\$0.56	\$0.00	\$30.60
2	45	\$20.86	\$11.50	\$0.63	\$0.00	\$32.99
3	50	\$23.18	\$11.50	\$0.70	\$0.00	\$35.38
4	55	\$25.49	\$11.50	\$7.35	\$0.00	\$44.34
5	60	\$27.81	\$11.50	\$7.86	\$0.00	\$47.17
6	65	\$30.13	\$11.50	\$8.37	\$0.00	\$50.00
7	70	\$32.45	\$11.50	\$8.89	\$0.00	\$52.84
8	75	\$34.76	\$11.50	\$9.40	\$0.00	\$55.66

Effective Date - 09/01/2023

Step	percent	Apprentice Base Wage	Health	Pension	Supplemental Unemployment	Total Rate
1	40	\$19.15	\$11.75	\$0.57	\$0.00	\$31.47
2	45	\$21.54	\$11.75	\$0.65	\$0.00	\$33.94
3	50	\$23.94	\$11.75	\$0.72	\$0.00	\$36.41
4	55	\$26.33	\$11.75	\$7.79	\$0.00	\$45.87
5	60	\$28.72	\$11.75	\$8.31	\$0.00	\$48.78
6	65	\$31.12	\$11.75	\$8.65	\$0.00	\$51.52
7	70	\$33.51	\$11.75	\$9.38	\$0.00	\$54.64
8	75	\$35.90	\$11.75	\$9.90	\$0.00	\$57.55

**Notes:**

Apprentice to Journeyworker Ratio:2:3\*\*\*

ELEVATOR CONSTRUCTOR	01/01/2022	\$65.62	\$16.03	\$20.21	\$0.00	\$101.86
<i>ELEVATOR CONSTRUCTORS LOCAL 4</i>						

**Apprentice - ELEVATOR CONSTRUCTOR - Local 4**

Effective Date - 01/01/2022

Step	percent	Apprentice Base Wage	Health	Pension	Supplemental Unemployment	Total Rate
1	50	\$32.81	\$16.03	\$0.00	\$0.00	\$48.84
2	55	\$36.09	\$16.03	\$20.21	\$0.00	\$72.33
3	65	\$42.65	\$16.03	\$20.21	\$0.00	\$78.89
4	70	\$45.93	\$16.03	\$20.21	\$0.00	\$82.17
5	80	\$52.50	\$16.03	\$20.21	\$0.00	\$88.74

**Notes:**

Steps 1-2 are 6 mos.; Steps 3-5 are 1 year

Apprentice to Journeyworker Ratio:1:1

ELEVATOR CONSTRUCTOR HELPER	01/01/2022	\$45.93	\$16.03	\$20.21	\$0.00	\$82.17
<i>ELEVATOR CONSTRUCTORS LOCAL 4</i>						

Classification	Effective Date	Base Wage	Health	Pension	Supplemental Unemployment	Total Rate
For apprentice rates see "Apprentice - ELEVATOR CONSTRUCTOR"						
FENCE & GUARD RAIL ERECTOR (HEAVY & HIGHWAY)	12/01/2022	\$36.81	\$9.35	\$16.89	\$0.00	\$63.05
LABORERS - ZONE 2 (HEAVY & HIGHWAY)	06/01/2023	\$37.71	\$9.40	\$16.89	\$0.00	\$64.00
	12/01/2023	\$38.61	\$9.40	\$16.89	\$0.00	\$64.90
	06/01/2024	\$39.94	\$9.40	\$16.89	\$0.00	\$66.23
	12/01/2024	\$41.27	\$9.40	\$16.89	\$0.00	\$67.56
	06/01/2025	\$42.66	\$9.40	\$16.89	\$0.00	\$68.95
	12/01/2025	\$44.04	\$9.40	\$16.89	\$0.00	\$70.33
	06/01/2026	\$45.48	\$9.40	\$16.89	\$0.00	\$71.77
	12/01/2026	\$46.92	\$9.40	\$16.89	\$0.00	\$73.21
For apprentice rates see "Apprentice- LABORER (Heavy and Highway)						
FIELD ENG.INST.PERSON-BLDG,SITE,HVY/HWY	05/01/2023	\$49.91	\$14.25	\$16.05	\$0.00	\$80.21
OPERATING ENGINEERS LOCAL 4	11/01/2023	\$51.15	\$14.25	\$16.05	\$0.00	\$81.45
	05/01/2024	\$52.39	\$14.25	\$16.05	\$0.00	\$82.69
	11/01/2024	\$53.68	\$14.25	\$16.05	\$0.00	\$83.98
	05/01/2025	\$55.12	\$14.25	\$16.05	\$0.00	\$85.42
	11/01/2025	\$56.41	\$14.25	\$16.05	\$0.00	\$86.71
	05/01/2026	\$57.85	\$14.25	\$16.05	\$0.00	\$88.15
	11/01/2026	\$59.14	\$14.25	\$16.05	\$0.00	\$89.44
	05/01/2027	\$60.57	\$14.25	\$16.05	\$0.00	\$90.87
For apprentice rates see "Apprentice- OPERATING ENGINEERS"						
FIELD ENG.PARTY CHIEF-BLDG,SITE,HVY/HWY	05/01/2023	\$51.47	\$14.25	\$16.05	\$0.00	\$81.77
OPERATING ENGINEERS LOCAL 4	11/01/2023	\$52.72	\$14.25	\$16.05	\$0.00	\$83.02
	05/01/2024	\$53.97	\$14.25	\$16.05	\$0.00	\$84.27
	11/01/2024	\$55.27	\$14.25	\$16.05	\$0.00	\$85.57
	05/01/2025	\$56.72	\$14.25	\$16.05	\$0.00	\$87.02
	11/01/2025	\$58.02	\$14.25	\$16.05	\$0.00	\$88.32
	05/01/2026	\$59.47	\$14.25	\$16.05	\$0.00	\$89.77
	11/01/2026	\$60.77	\$14.25	\$16.05	\$0.00	\$91.07
	05/01/2027	\$62.22	\$14.25	\$16.05	\$0.00	\$92.52
For apprentice rates see "Apprentice- OPERATING ENGINEERS"						
FIELD ENG.ROD PERSON-BLDG,SITE,HVY/HWY	05/01/2023	\$25.05	\$14.25	\$16.05	\$0.00	\$55.35
OPERATING ENGINEERS LOCAL 4	11/01/2023	\$25.78	\$14.25	\$16.05	\$0.00	\$56.08
	05/01/2024	\$26.51	\$14.25	\$16.05	\$0.00	\$56.81
	11/01/2024	\$27.27	\$14.25	\$16.05	\$0.00	\$57.57
	05/01/2025	\$28.12	\$14.25	\$16.05	\$0.00	\$58.42
	11/01/2025	\$28.88	\$14.25	\$16.05	\$0.00	\$59.18
	05/01/2026	\$29.73	\$14.25	\$16.05	\$0.00	\$60.03
	11/01/2026	\$30.49	\$14.25	\$16.05	\$0.00	\$60.79
	05/01/2027	\$31.34	\$14.25	\$16.05	\$0.00	\$61.64
For apprentice rates see "Apprentice- OPERATING ENGINEERS"						
FIRE ALARM INSTALLER	09/01/2020	\$43.66	\$10.90	\$14.66	\$0.00	\$69.22
ELECTRICIANS LOCAL 223						
For apprentice rates see "Apprentice- ELECTRICIAN"						
FIRE ALARM REPAIR / MAINTENANCE	09/01/2020	\$36.86	\$10.90	\$12.45	\$0.00	\$60.21
/ COMMISSIONING ELECTRICIANS						
LOCAL 223						
For apprentice rates see "Apprentice- TELECOMMUNICATIONS TECHNICIAN"						



Classification	Effective Date	Base Wage	Health	Pension	Supplemental Unemployment	Total Rate
FIREMAN (ASST. ENGINEER) OPERATING ENGINEERS LOCAL 4	12/01/2022	\$43.54	\$14.25	\$16.05	\$0.00	\$73.84
	06/01/2023	\$44.56	\$14.25	\$16.05	\$0.00	\$74.86
	12/01/2023	\$45.57	\$14.25	\$16.05	\$0.00	\$75.87
	06/01/2024	\$46.63	\$14.25	\$16.05	\$0.00	\$76.93
	12/01/2024	\$47.81	\$14.25	\$16.05	\$0.00	\$78.11
	06/01/2025	\$48.87	\$14.25	\$16.05	\$0.00	\$79.17
	12/01/2025	\$50.04	\$14.25	\$16.05	\$0.00	\$80.34
	06/01/2026	\$51.10	\$14.25	\$16.05	\$0.00	\$81.40
	12/01/2026	\$52.28	\$14.25	\$16.05	\$0.00	\$82.58
For apprentice rates see "Apprentice- OPERATING ENGINEERS"						
FLAGGER & SIGNALER (HEAVY & HIGHWAY) LABORERS - ZONE 2 (HEAVY & HIGHWAY)	12/01/2022	\$25.23	\$9.35	\$16.89	\$0.00	\$51.47
	06/01/2023	\$25.98	\$9.40	\$16.89	\$0.00	\$52.27
	12/01/2023	\$25.98	\$9.40	\$16.89	\$0.00	\$52.27
	06/01/2024	\$27.01	\$9.40	\$16.89	\$0.00	\$53.30
	12/01/2024	\$27.01	\$9.40	\$16.89	\$0.00	\$53.30
	06/01/2025	\$28.09	\$9.40	\$16.89	\$0.00	\$54.38
	12/01/2025	\$28.09	\$9.40	\$16.89	\$0.00	\$54.38
	06/01/2026	\$29.21	\$9.40	\$16.89	\$0.00	\$55.50
	12/01/2026	\$29.21	\$9.40	\$16.89	\$0.00	\$55.50
For apprentice rates see "Apprentice- LABORER (Heavy and Highway)						
FLOORCOVERER FLOORCOVERERS LOCAL 2168 ZONE I	03/01/2022	\$51.77	\$9.33	\$20.27	\$0.00	\$81.37

**Apprentice - FLOORCOVERER - Local 2168 Zone I**

Effective Date - 03/01/2022

Step	percent	Apprentice Base Wage	Health	Pension	Supplemental Unemployment	Total Rate
1	50	\$25.89	\$9.33	\$1.79	\$0.00	\$37.01
2	55	\$28.47	\$9.33	\$1.79	\$0.00	\$39.59
3	60	\$31.06	\$9.33	\$14.90	\$0.00	\$55.29
4	65	\$33.65	\$9.33	\$14.90	\$0.00	\$57.88
5	70	\$36.24	\$9.33	\$16.69	\$0.00	\$62.26
6	75	\$38.83	\$9.33	\$16.69	\$0.00	\$64.85
7	80	\$41.42	\$9.33	\$18.48	\$0.00	\$69.23
8	85	\$44.00	\$9.33	\$18.48	\$0.00	\$71.81

Notes: Steps are 750 hrs.

% After 10/1/17; 45/45/55/55/70/70/80/80 (1500hr Steps)

Step 1&2 \$32.94/ 3&4 \$39.66/ 5&6 \$60.32/ 7&8 \$67.10

Apprentice to Journeyworker Ratio:1:1

Classification	Effective Date	Base Wage	Health	Pension	Supplemental Unemployment	Total Rate
FORK LIFT/CHERRY PICKER <i>OPERATING ENGINEERS LOCAL 4</i>	12/01/2022	\$53.63	\$14.25	\$16.05	\$0.00	\$83.93
	06/01/2023	\$54.88	\$14.25	\$16.05	\$0.00	\$85.18
	12/01/2023	\$56.13	\$14.25	\$16.05	\$0.00	\$86.43
	06/01/2024	\$57.43	\$14.25	\$16.05	\$0.00	\$87.73
	12/01/2024	\$58.88	\$14.25	\$16.05	\$0.00	\$89.18
	06/01/2025	\$60.18	\$14.25	\$16.05	\$0.00	\$90.48
	12/01/2025	\$61.63	\$14.25	\$16.05	\$0.00	\$91.93
	06/01/2026	\$62.93	\$14.25	\$16.05	\$0.00	\$93.23
For apprentice rates see "Apprentice- OPERATING ENGINEERS"						
GENERATOR/LIGHTING PLANT/HEATERS <i>OPERATING ENGINEERS LOCAL 4</i>	12/01/2022	\$35.08	\$14.25	\$16.05	\$0.00	\$65.38
	06/01/2023	\$35.90	\$14.25	\$16.05	\$0.00	\$66.20
	12/01/2023	\$36.72	\$14.25	\$16.05	\$0.00	\$67.02
	06/01/2024	\$37.57	\$14.25	\$16.05	\$0.00	\$67.87
	12/01/2024	\$38.52	\$14.25	\$16.05	\$0.00	\$68.82
	06/01/2025	\$39.37	\$14.25	\$16.05	\$0.00	\$69.67
	12/01/2025	\$40.32	\$14.25	\$16.05	\$0.00	\$70.62
	06/01/2026	\$41.18	\$14.25	\$16.05	\$0.00	\$71.48
For apprentice rates see "Apprentice- OPERATING ENGINEERS"						
GLAZIER (GLASS PLANK/AIR BARRIER/INTERIOR SYSTEMS) <i>GLAZIERS LOCAL 35 (ZONE 2)</i>	01/01/2023	\$45.56	\$8.65	\$23.05	\$0.00	\$77.26
	07/01/2023	\$46.76	\$8.65	\$23.05	\$0.00	\$78.46
	01/01/2024	\$47.96	\$8.65	\$23.05	\$0.00	\$79.66
	07/01/2024	\$49.16	\$8.65	\$23.05	\$0.00	\$80.86
	01/01/2025	\$50.36	\$8.65	\$23.05	\$0.00	\$82.06

Classification

Effective Date Base Wage Health Pension Supplemental Unemployment Total Rate

Apprentice - GLAZIER - Local 35 Zone 2

Effective Date - 01/01/2023

Step	percent	Apprentice Base Wage	Health	Pension	Supplemental Unemployment	Total Rate
1	50	\$22.78	\$8.65	\$0.00	\$0.00	\$31.43
2	55	\$25.06	\$8.65	\$6.27	\$0.00	\$39.98
3	60	\$27.34	\$8.65	\$6.84	\$0.00	\$42.83
4	65	\$29.61	\$8.65	\$7.41	\$0.00	\$45.67
5	70	\$31.89	\$8.65	\$19.63	\$0.00	\$60.17
6	75	\$34.17	\$8.65	\$20.20	\$0.00	\$63.02
7	80	\$36.45	\$8.65	\$20.77	\$0.00	\$65.87
8	90	\$41.00	\$8.65	\$21.91	\$0.00	\$71.56

Effective Date - 07/01/2023

Step	percent	Apprentice Base Wage	Health	Pension	Supplemental Unemployment	Total Rate
1	50	\$23.38	\$8.65	\$0.00	\$0.00	\$32.03
2	55	\$25.72	\$8.65	\$6.27	\$0.00	\$40.64
3	60	\$28.06	\$8.65	\$6.84	\$0.00	\$43.55
4	65	\$30.39	\$8.65	\$7.41	\$0.00	\$46.45
5	70	\$32.73	\$8.65	\$19.63	\$0.00	\$61.01
6	75	\$35.07	\$8.65	\$20.20	\$0.00	\$63.92
7	80	\$37.41	\$8.65	\$20.77	\$0.00	\$66.83
8	90	\$42.08	\$8.65	\$21.91	\$0.00	\$72.64

Notes:

Steps are 750 hrs.

Apprentice to Journeyworker Ratio:1:1

HOISTING ENGINEER/CRANES/GRADALLS	12/01/2022	\$53.63	\$14.25	\$16.05	\$0.00	\$83.93
OPERATING ENGINEERS LOCAL 4	06/01/2023	\$54.88	\$14.25	\$16.05	\$0.00	\$85.18
	12/01/2023	\$56.13	\$14.25	\$16.05	\$0.00	\$86.43
	06/01/2024	\$57.43	\$14.25	\$16.05	\$0.00	\$87.73
	12/01/2024	\$58.88	\$14.25	\$16.05	\$0.00	\$89.18
	06/01/2025	\$60.18	\$14.25	\$16.05	\$0.00	\$90.48
	12/01/2025	\$61.63	\$14.25	\$16.05	\$0.00	\$91.93
	06/01/2026	\$62.93	\$14.25	\$16.05	\$0.00	\$93.23
	12/01/2026	\$64.38	\$14.25	\$16.05	\$0.00	\$94.68

Classification

Effective Date Base Wage Health Pension Supplemental Unemployment Total Rate

Apprentice - OPERATING ENGINEERS - Local 4

Effective Date - 12/01/2022

Step	percent	Apprentice Base Wage	Health	Pension	Supplemental Unemployment	Total Rate
1	55	\$29.50	\$14.25	\$0.00	\$0.00	\$43.75
2	60	\$32.18	\$14.25	\$16.05	\$0.00	\$62.48
3	65	\$34.86	\$14.25	\$16.05	\$0.00	\$65.16
4	70	\$37.54	\$14.25	\$16.05	\$0.00	\$67.84
5	75	\$40.22	\$14.25	\$16.05	\$0.00	\$70.52
6	80	\$42.90	\$14.25	\$16.05	\$0.00	\$73.20
7	85	\$45.59	\$14.25	\$16.05	\$0.00	\$75.89
8	90	\$48.27	\$14.25	\$16.05	\$0.00	\$78.57

Effective Date - 06/01/2023

Step	percent	Apprentice Base Wage	Health	Pension	Supplemental Unemployment	Total Rate
1	55	\$30.18	\$14.25	\$0.00	\$0.00	\$44.43
2	60	\$32.93	\$14.25	\$16.05	\$0.00	\$63.23
3	65	\$35.67	\$14.25	\$16.05	\$0.00	\$65.97
4	70	\$38.42	\$14.25	\$16.05	\$0.00	\$68.72
5	75	\$41.16	\$14.25	\$16.05	\$0.00	\$71.46
6	80	\$43.90	\$14.25	\$16.05	\$0.00	\$74.20
7	85	\$46.65	\$14.25	\$16.05	\$0.00	\$76.95
8	90	\$49.39	\$14.25	\$16.05	\$0.00	\$79.69

Notes:

Apprentice to Journeyworker Ratio:1:6

HVAC (DUCTWORK) SHEETMETAL WORKERS LOCAL 17 - A	02/01/2023	\$55.31	\$14.11	\$26.64	\$2.83	\$98.89
	08/01/2023	\$57.01	\$14.11	\$26.64	\$2.83	\$100.59
	02/01/2024	\$58.71	\$14.11	\$26.64	\$2.83	\$102.29
	08/01/2024	\$60.46	\$14.11	\$26.64	\$2.83	\$104.04
	02/01/2025	\$62.21	\$14.11	\$26.64	\$2.83	\$105.79
	08/01/2025	\$64.06	\$14.11	\$26.64	\$2.83	\$107.64
	02/01/2026	\$66.01	\$14.11	\$26.64	\$2.83	\$109.59

For apprentice rates see "Apprentice- SHEET METAL WORKER"

HVAC (ELECTRICAL CONTROLS) ELECTRICIANS LOCAL 223	09/01/2020	\$43.66	\$10.90	\$14.66	\$0.00	\$69.22
--	------------	---------	---------	---------	--------	---------

For apprentice rates see "Apprentice- ELECTRICIAN"

HVAC (TESTING AND BALANCING - AIR) SHEETMETAL WORKERS LOCAL 17 - A	02/01/2023	\$55.31	\$14.11	\$26.64	\$2.83	\$98.89
	08/01/2023	\$57.01	\$14.11	\$26.64	\$2.83	\$100.59
	02/01/2024	\$58.71	\$14.11	\$26.64	\$2.83	\$102.29
	08/01/2024	\$60.46	\$14.11	\$26.64	\$2.83	\$104.04
	02/01/2025	\$62.21	\$14.11	\$26.64	\$2.83	\$105.79
	08/01/2025	\$64.06	\$14.11	\$26.64	\$2.83	\$107.64
	02/01/2026	\$66.01	\$14.11	\$26.64	\$2.83	\$109.59

Classification	Effective Date	Base Wage	Health	Pension	Supplemental Unemployment	Total Rate
For apprentice rates see "Apprentice- SHEET METAL WORKER"						
HVAC (TESTING AND BALANCING -WATER) PLUMBERS & PIPEFITTERS LOCAL 51	08/30/2021	\$46.49	\$10.15	\$19.95	\$0.00	\$76.59
For apprentice rates see "Apprentice- PIPEFITTER" or "PLUMBER/PIPEFITTER"						
HVAC MECHANIC PLUMBERS & PIPEFITTERS LOCAL 51	08/30/2021	\$46.49	\$10.15	\$19.95	\$0.00	\$76.59
For apprentice rates see "Apprentice- PIPEFITTER" or "PLUMBER/PIPEFITTER"						
HYDRAULIC DRILLS LABORERS - ZONE 2	12/01/2022	\$37.91	\$9.10	\$16.64	\$0.00	\$63.65
	06/01/2023	\$38.21	\$9.40	\$16.89	\$0.00	\$64.50
	12/01/2023	\$39.11	\$9.40	\$16.89	\$0.00	\$65.40
For apprentice rates see "Apprentice- LABORER"						
HYDRAULIC DRILLS (HEAVY & HIGHWAY) LABORERS - ZONE 2 (HEAVY & HIGHWAY)	12/01/2022	\$37.31	\$9.35	\$16.89	\$0.00	\$63.55
	06/01/2023	\$38.21	\$9.40	\$16.89	\$0.00	\$64.50
	12/01/2023	\$39.11	\$9.40	\$16.89	\$0.00	\$65.40
	06/01/2024	\$40.44	\$9.40	\$16.89	\$0.00	\$66.73
	12/01/2024	\$41.77	\$9.40	\$16.89	\$0.00	\$68.06
	06/01/2025	\$43.16	\$9.40	\$16.89	\$0.00	\$69.45
	12/01/2025	\$44.54	\$9.40	\$16.89	\$0.00	\$70.83
	06/01/2026	\$45.98	\$9.40	\$16.89	\$0.00	\$72.27
For apprentice rates see "Apprentice- LABORER (Heavy and Highway)"						
INSULATOR (PIPES & TANKS) HEAT & FROST INSULATORS LOCAL 6 (BOSTON)	09/01/2022	\$53.85	\$13.80	\$17.14	\$0.00	\$84.79

**Apprentice - ASBESTOS INSULATOR (Pipes & Tanks) - Local 6 Boston**

Effective Date - 09/01/2022

Step	percent	Apprentice Base Wage	Health	Pension	Supplemental Unemployment	Total Rate
1	50	\$26.93	\$13.80	\$12.42	\$0.00	\$53.15
2	60	\$32.31	\$13.80	\$13.36	\$0.00	\$59.47
3	70	\$37.70	\$13.80	\$14.31	\$0.00	\$65.81
4	80	\$43.08	\$13.80	\$15.25	\$0.00	\$72.13

**Notes:**

Steps are 1 year

**Apprentice to Journeyworker Ratio:1:4**

IRONWORKER/WELDER IRONWORKERS LOCAL 7 (BOSTON AREA)	03/16/2023	\$52.72	\$8.35	\$26.70	\$0.00	\$87.77
	03/16/2024	\$53.97	\$8.35	\$26.70	\$0.00	\$89.02

**Apprentice - IRONWORKER - Local 7 Boston**

Effective Date - 03/16/2023

Step	percent	Apprentice Base Wage	Health	Pension	Supplemental Unemployment	Total Rate
1	60	\$31.63	\$8.35	\$26.70	\$0.00	\$66.68
2	70	\$36.90	\$8.35	\$26.70	\$0.00	\$71.95
3	75	\$39.54	\$8.35	\$26.70	\$0.00	\$74.59
4	80	\$42.18	\$8.35	\$26.70	\$0.00	\$77.23
5	85	\$44.81	\$8.35	\$26.70	\$0.00	\$79.86
6	90	\$47.45	\$8.35	\$26.70	\$0.00	\$82.50

Effective Date - 03/16/2024

Step	percent	Apprentice Base Wage	Health	Pension	Supplemental Unemployment	Total Rate
1	60	\$32.38	\$8.35	\$26.70	\$0.00	\$67.43
2	70	\$37.78	\$8.35	\$26.70	\$0.00	\$72.83
3	75	\$40.48	\$8.35	\$26.70	\$0.00	\$75.53
4	80	\$43.18	\$8.35	\$26.70	\$0.00	\$78.23
5	85	\$45.87	\$8.35	\$26.70	\$0.00	\$80.92
6	90	\$48.57	\$8.35	\$26.70	\$0.00	\$83.62

**Notes:**

Apprentice to Journeyworker Ratio:1:4

JACKHAMMER & PAVING BREAKER OPERATOR	12/01/2022	\$37.41	\$9.10	\$16.64	\$0.00	\$63.15
LABORERS - ZONE 2	06/01/2023	\$37.71	\$9.40	\$16.89	\$0.00	\$64.00
	12/01/2023	\$38.61	\$9.40	\$16.89	\$0.00	\$64.90

For apprentice rates see "Apprentice- LABORER"

LABORER	12/01/2022	\$37.16	\$9.10	\$16.64	\$0.00	\$62.90
LABORERS - ZONE 2	06/01/2023	\$37.46	\$9.40	\$16.89	\$0.00	\$63.75
	12/01/2023	\$38.36	\$9.40	\$16.89	\$0.00	\$64.65

Classification

Effective Date    Base Wage    Health    Pension    Supplemental Unemployment    Total Rate

**Apprentice - LABORER - Zone 2**

Effective Date - 12/01/2022

Step	percent	Apprentice Base Wage	Health	Pension	Supplemental Unemployment	Total Rate
1	60	\$22.30	\$9.10	\$16.64	\$0.00	\$48.04
2	70	\$26.01	\$9.10	\$16.64	\$0.00	\$51.75
3	80	\$29.73	\$9.10	\$16.64	\$0.00	\$55.47
4	90	\$33.44	\$9.10	\$16.64	\$0.00	\$59.18

Effective Date - 06/01/2023

Step	percent	Apprentice Base Wage	Health	Pension	Supplemental Unemployment	Total Rate
1	60	\$22.48	\$9.10	\$16.64	\$0.00	\$48.22
2	70	\$26.22	\$9.10	\$16.64	\$0.00	\$51.96
3	80	\$29.97	\$9.10	\$16.64	\$0.00	\$55.71
4	90	\$33.71	\$9.10	\$16.64	\$0.00	\$59.45

**Notes:**

**Apprentice to Journeyworker Ratio:1:5**

LABORER (HEAVY & HIGHWAY)	12/01/2022	\$36.56	\$9.35	\$16.89	\$0.00	\$62.80
LABORERS - ZONE 2 (HEAVY & HIGHWAY)	06/01/2023	\$37.46	\$9.40	\$16.89	\$0.00	\$63.75
	12/01/2023	\$38.36	\$9.40	\$16.89	\$0.00	\$64.65
	06/01/2024	\$39.69	\$9.40	\$16.89	\$0.00	\$65.98
	12/01/2024	\$41.02	\$9.40	\$16.89	\$0.00	\$67.31
	06/01/2025	\$42.41	\$9.40	\$16.89	\$0.00	\$68.70
	12/01/2025	\$43.79	\$9.40	\$16.89	\$0.00	\$70.08
	06/01/2026	\$45.23	\$9.40	\$16.89	\$0.00	\$71.52
	12/01/2026	\$46.67	\$9.40	\$16.89	\$0.00	\$72.96





Classification	Effective Date	Base Wage	Health	Pension	Supplemental Unemployment	Total Rate
LABORER: MULTI-TRADE TENDER <i>LABORERS - ZONE 2</i>	12/01/2022	\$37.16	\$9.10	\$16.64	\$0.00	\$62.90
	06/01/2023	\$37.46	\$9.40	\$16.89	\$0.00	\$63.75
	12/01/2023	\$38.36	\$9.40	\$16.89	\$0.00	\$64.65
For apprentice rates see "Apprentice- LABORER"						
LABORER: TREE REMOVER <i>LABORERS - ZONE 2</i>	12/01/2022	\$37.16	\$9.10	\$16.64	\$0.00	\$62.90
	06/01/2023	\$37.46	\$9.40	\$16.89	\$0.00	\$63.75
	12/01/2023	\$38.36	\$9.40	\$16.89	\$0.00	\$64.65
This classification applies to the removal of standing trees, and the trimming and removal of branches and limbs when related to public works construction or site clearance incidental to construction . For apprentice rates see "Apprentice- LABORER"						
LASER BEAM OPERATOR <i>LABORERS - ZONE 2</i>	12/01/2022	\$37.41	\$9.10	\$16.64	\$0.00	\$63.15
	06/01/2023	\$37.71	\$9.40	\$16.89	\$0.00	\$64.00
	12/01/2023	\$38.61	\$9.40	\$16.89	\$0.00	\$64.90
For apprentice rates see "Apprentice- LABORER"						
LASER BEAM OPERATOR (HEAVY & HIGHWAY) <i>LABORERS - ZONE 2 (HEAVY &amp; HIGHWAY)</i>	12/01/2022	\$36.81	\$9.35	\$16.89	\$0.00	\$63.05
	06/01/2023	\$37.71	\$9.40	\$16.89	\$0.00	\$64.00
	12/01/2023	\$38.61	\$9.40	\$16.89	\$0.00	\$64.90
	06/01/2024	\$39.94	\$9.40	\$16.89	\$0.00	\$66.23
	12/01/2024	\$41.27	\$9.40	\$16.89	\$0.00	\$67.56
	06/01/2025	\$42.66	\$9.40	\$16.89	\$0.00	\$68.95
	12/01/2025	\$44.04	\$9.40	\$16.89	\$0.00	\$70.33
	06/01/2026	\$45.48	\$9.40	\$16.89	\$0.00	\$71.77
12/01/2026	\$46.92	\$9.40	\$16.89	\$0.00	\$73.21	
For apprentice rates see "Apprentice- LABORER (Heavy and Highway)"						
MARBLE & TILE FINISHERS <i>BRICKLAYERS LOCAL 3 - MARBLE &amp; TILE</i>	02/01/2023	\$46.25	\$11.49	\$20.37	\$0.00	\$78.11
	08/01/2023	\$47.89	\$11.49	\$20.37	\$0.00	\$79.75
	02/01/2024	\$48.89	\$11.49	\$20.37	\$0.00	\$80.75
	08/01/2024	\$50.57	\$11.49	\$20.37	\$0.00	\$82.43
	02/01/2025	\$51.61	\$11.49	\$20.37	\$0.00	\$83.47
	08/01/2025	\$53.33	\$11.49	\$20.37	\$0.00	\$85.19
	02/01/2026	\$54.41	\$11.49	\$20.37	\$0.00	\$86.27
	08/01/2026	\$56.17	\$11.49	\$20.37	\$0.00	\$88.03
02/01/2027	\$57.29	\$11.49	\$20.37	\$0.00	\$89.15	

Apprentice - MARBLE & TILE FINISHER - Local 3 Marble & Tile

Effective Date - 02/01/2023

Step	percent	Apprentice Base Wage	Health	Pension	Supplemental Unemployment	Total Rate
1	50	\$23.13	\$11.49	\$20.37	\$0.00	\$54.99
2	60	\$27.75	\$11.49	\$20.37	\$0.00	\$59.61
3	70	\$32.38	\$11.49	\$20.37	\$0.00	\$64.24
4	80	\$37.00	\$11.49	\$20.37	\$0.00	\$68.86
5	90	\$41.63	\$11.49	\$20.37	\$0.00	\$73.49

Effective Date - 08/01/2023

Step	percent	Apprentice Base Wage	Health	Pension	Supplemental Unemployment	Total Rate
1	50	\$23.95	\$11.49	\$20.37	\$0.00	\$55.81
2	60	\$28.73	\$11.49	\$20.37	\$0.00	\$60.59
3	70	\$33.52	\$11.49	\$20.37	\$0.00	\$65.38
4	80	\$38.31	\$11.49	\$20.37	\$0.00	\$70.17
5	90	\$43.10	\$11.49	\$20.37	\$0.00	\$74.96

Notes:

Apprentice to Journeyworker Ratio:1:3

Classification	Effective Date	Base Wage	Health	Pension	Supplemental Unemployment	Total Rate
MARBLE MASONS, TILELAYERS & TERRAZZO MECH	02/01/2023	\$60.37	\$11.49	\$22.31	\$0.00	\$94.17
BRICKLAYERS LOCAL 3 - MARBLE & TILE	08/01/2023	\$62.42	\$11.49	\$22.31	\$0.00	\$96.22
	02/01/2024	\$63.67	\$11.49	\$22.31	\$0.00	\$97.47
	08/01/2024	\$65.77	\$11.49	\$22.31	\$0.00	\$99.57
	02/01/2025	\$67.07	\$11.49	\$22.31	\$0.00	\$100.87
	08/01/2025	\$69.22	\$11.49	\$22.31	\$0.00	\$103.02
	02/01/2026	\$70.57	\$11.49	\$22.31	\$0.00	\$104.37
	08/01/2026	\$72.77	\$11.49	\$22.31	\$0.00	\$106.57
	02/01/2027	\$74.17	\$11.49	\$22.31	\$0.00	\$107.97

**Apprentice - MARBLE-TILE-TERRAZZO MECHANIC - Local 3 Marble & Tile**

**Effective Date - 02/01/2023**

Step	percent	Apprentice Base Wage	Health	Pension	Supplemental Unemployment	Total Rate
1	50	\$30.19	\$11.49	\$22.31	\$0.00	\$63.99
2	60	\$36.22	\$11.49	\$22.31	\$0.00	\$70.02
3	70	\$42.26	\$11.49	\$22.31	\$0.00	\$76.06
4	80	\$48.30	\$11.49	\$22.31	\$0.00	\$82.10
5	90	\$54.33	\$11.49	\$22.31	\$0.00	\$88.13

**Effective Date - 08/01/2023**

Step	percent	Apprentice Base Wage	Health	Pension	Supplemental Unemployment	Total Rate
1	50	\$31.21	\$11.49	\$22.31	\$0.00	\$65.01
2	60	\$37.45	\$11.49	\$22.31	\$0.00	\$71.25
3	70	\$43.69	\$11.49	\$22.31	\$0.00	\$77.49
4	80	\$49.94	\$11.49	\$22.31	\$0.00	\$83.74
5	90	\$56.18	\$11.49	\$22.31	\$0.00	\$89.98

**Notes:**

**Apprentice to Journeyworker Ratio:1:5**

<b>MECH. SWEEPER OPERATOR (ON CONST. SITES)</b>	12/01/2022	\$53.05	\$14.25	\$16.05	\$0.00	\$83.35
<i>OPERATING ENGINEERS LOCAL 4</i>	06/01/2023	\$54.29	\$14.25	\$16.05	\$0.00	\$84.59
	12/01/2023	\$55.53	\$14.25	\$16.05	\$0.00	\$85.83
	06/01/2024	\$56.81	\$14.25	\$16.05	\$0.00	\$87.11
	12/01/2024	\$58.25	\$14.25	\$16.05	\$0.00	\$88.55
	06/01/2025	\$59.53	\$14.25	\$16.05	\$0.00	\$89.83
	12/01/2025	\$60.97	\$14.25	\$16.05	\$0.00	\$91.27
	06/01/2026	\$62.25	\$14.25	\$16.05	\$0.00	\$92.55
	12/01/2026	\$63.69	\$14.25	\$16.05	\$0.00	\$93.99

For apprentice rates see "Apprentice- OPERATING ENGINEERS"

<b>MECHANICS MAINTENANCE</b>	12/01/2022	\$53.05	\$14.25	\$16.05	\$0.00	\$83.35
<i>OPERATING ENGINEERS LOCAL 4</i>	06/01/2023	\$54.29	\$14.25	\$16.05	\$0.00	\$84.59
	12/01/2023	\$55.53	\$14.25	\$16.05	\$0.00	\$85.83
	06/01/2024	\$56.81	\$14.25	\$16.05	\$0.00	\$87.11
	12/01/2024	\$58.25	\$14.25	\$16.05	\$0.00	\$88.55
	06/01/2025	\$59.53	\$14.25	\$16.05	\$0.00	\$89.83
	12/01/2025	\$60.97	\$14.25	\$16.05	\$0.00	\$91.27
	06/01/2026	\$62.25	\$14.25	\$16.05	\$0.00	\$92.55
	12/01/2026	\$63.69	\$14.25	\$16.05	\$0.00	\$93.99

For apprentice rates see "Apprentice- OPERATING ENGINEERS"

<b>MILLWRIGHT (Zone 2)</b>	01/02/2023	\$41.92	\$8.58	\$21.57	\$0.00	\$72.07
<i>MILLWRIGHTS LOCAL 1121 - Zone 2</i>						

Classification

Effective Date Base Wage Health Pension Supplemental Unemployment Total Rate

Apprentice - MILLWRIGHT - Local 1121 Zone 2

Effective Date - 01/02/2023

Step	percent	Apprentice Base Wage	Health	Pension	Supplemental Unemployment	Total Rate
1	55	\$23.06	\$8.58	\$5.72	\$0.00	\$37.36
2	65	\$27.25	\$8.58	\$17.93	\$0.00	\$53.76
3	75	\$31.44	\$8.58	\$18.98	\$0.00	\$59.00
4	85	\$35.63	\$8.58	\$20.01	\$0.00	\$64.22

Notes: Step 1&2 Appr. indentured after 1/6/2020 receive no pension, but do receive annuity. (Step 1 \$5.72, Step 2 \$6.66)  
Steps are 2,000 hours

Apprentice to Journeyworker Ratio:1:4

MORTAR MIXER	12/01/2022	\$37.41	\$9.10	\$16.64	\$0.00	\$63.15
LABORERS - ZONE 2	06/01/2023	\$37.71	\$9.40	\$16.89	\$0.00	\$64.00
	12/01/2023	\$38.61	\$9.40	\$16.89	\$0.00	\$64.90

For apprentice rates see "Apprentice- LABORER"

OILER (OTHER THAN TRUCK CRANES,GRADALLS)	12/01/2022	\$24.37	\$14.25	\$16.05	\$0.00	\$54.67
OPERATING ENGINEERS LOCAL 4	06/01/2023	\$24.94	\$14.25	\$16.05	\$0.00	\$55.24
	12/01/2023	\$25.51	\$14.25	\$16.05	\$0.00	\$55.81
	06/01/2024	\$26.11	\$14.25	\$16.05	\$0.00	\$56.41
	12/01/2024	\$26.77	\$14.25	\$16.05	\$0.00	\$57.07
	06/01/2025	\$27.37	\$14.25	\$16.05	\$0.00	\$57.67
	12/01/2025	\$28.03	\$14.25	\$16.05	\$0.00	\$58.33
	06/01/2026	\$28.62	\$14.25	\$16.05	\$0.00	\$58.92
	12/01/2026	\$29.29	\$14.25	\$16.05	\$0.00	\$59.59

For apprentice rates see "Apprentice- OPERATING ENGINEERS"

OILER (TRUCK CRANES, GRADALLS)	12/01/2022	\$29.57	\$14.25	\$16.05	\$0.00	\$59.87
OPERATING ENGINEERS LOCAL 4	06/01/2023	\$30.27	\$14.25	\$16.05	\$0.00	\$60.57
	12/01/2023	\$30.96	\$14.25	\$16.05	\$0.00	\$61.26
	06/01/2024	\$31.68	\$14.25	\$16.05	\$0.00	\$61.98
	12/01/2024	\$32.48	\$14.25	\$16.05	\$0.00	\$62.78
	06/01/2025	\$33.20	\$14.25	\$16.05	\$0.00	\$63.50
	12/01/2025	\$34.00	\$14.25	\$16.05	\$0.00	\$64.30
	06/01/2026	\$34.72	\$14.25	\$16.05	\$0.00	\$65.02
	12/01/2026	\$35.52	\$14.25	\$16.05	\$0.00	\$65.82

For apprentice rates see "Apprentice- OPERATING ENGINEERS"

OTHER POWER DRIVEN EQUIPMENT - CLASS II	12/01/2022	\$53.05	\$14.25	\$16.05	\$0.00	\$83.35
OPERATING ENGINEERS LOCAL 4	06/01/2023	\$54.29	\$14.25	\$16.05	\$0.00	\$84.59
	12/01/2023	\$55.53	\$14.25	\$16.05	\$0.00	\$85.83
	06/01/2024	\$56.81	\$14.25	\$16.05	\$0.00	\$87.11
	12/01/2024	\$58.25	\$14.25	\$16.05	\$0.00	\$88.55
	06/01/2025	\$59.53	\$14.25	\$16.05	\$0.00	\$89.83
	12/01/2025	\$60.97	\$14.25	\$16.05	\$0.00	\$91.27
	06/01/2026	\$62.25	\$14.25	\$16.05	\$0.00	\$92.55
	12/01/2026	\$63.69	\$14.25	\$16.05	\$0.00	\$93.99

Classification	Effective Date	Base Wage	Health	Pension	Supplemental Unemployment	Total Rate
For apprentice rates see "Apprentice- OPERATING ENGINEERS"						
PAINTER (BRIDGES/TANKS) <i>PAINTERS LOCAL 35 - ZONE 2</i>	01/01/2023	\$56.06	\$8.65	\$23.05	\$0.00	\$87.76
	07/01/2023	\$57.26	\$8.65	\$23.05	\$0.00	\$88.96
	01/01/2024	\$58.46	\$8.65	\$23.05	\$0.00	\$90.16
	07/01/2024	\$59.66	\$8.65	\$23.05	\$0.00	\$91.36
	01/01/2025	\$60.86	\$8.65	\$23.05	\$0.00	\$92.56

**Apprentice - PAINTER Local 35 - BRIDGES/TANKS**

Effective Date - 01/01/2023

Step	percent	Apprentice Base Wage	Health	Pension	Supplemental Unemployment	Total Rate
1	50	\$28.03	\$8.65	\$0.00	\$0.00	\$36.68
2	55	\$30.83	\$8.65	\$6.27	\$0.00	\$45.75
3	60	\$33.64	\$8.65	\$6.84	\$0.00	\$49.13
4	65	\$36.44	\$8.65	\$7.41	\$0.00	\$52.50
5	70	\$39.24	\$8.65	\$19.63	\$0.00	\$67.52
6	75	\$42.05	\$8.65	\$20.20	\$0.00	\$70.90
7	80	\$44.85	\$8.65	\$20.77	\$0.00	\$74.27
8	90	\$50.45	\$8.65	\$21.91	\$0.00	\$81.01

Effective Date - 07/01/2023

Step	percent	Apprentice Base Wage	Health	Pension	Supplemental Unemployment	Total Rate
1	50	\$28.63	\$8.65	\$0.00	\$0.00	\$37.28
2	55	\$31.49	\$8.65	\$6.27	\$0.00	\$46.41
3	60	\$34.36	\$8.65	\$6.84	\$0.00	\$49.85
4	65	\$37.22	\$8.65	\$7.41	\$0.00	\$53.28
5	70	\$40.08	\$8.65	\$19.63	\$0.00	\$68.36
6	75	\$42.95	\$8.65	\$20.20	\$0.00	\$71.80
7	80	\$45.81	\$8.65	\$20.77	\$0.00	\$75.23
8	90	\$51.53	\$8.65	\$21.91	\$0.00	\$82.09

**Notes:**

Steps are 750 hrs.

**Apprentice to Journeyworker Ratio:1:1**

PAINTER (SPRAY OR SANDBLAST, NEW) *	01/01/2023	\$46.96	\$8.65	\$23.05	\$0.00	\$78.66
* If 30% or more of surfaces to be painted are new construction, NEW paint rate shall be used. <i>PAINTERS LOCAL 35 - ZONE 2</i>	07/01/2023	\$48.16	\$8.65	\$23.05	\$0.00	\$79.86
	01/01/2024	\$49.36	\$8.65	\$23.05	\$0.00	\$81.06
	07/01/2024	\$50.56	\$8.65	\$23.05	\$0.00	\$82.26
	01/01/2025	\$51.76	\$8.65	\$23.05	\$0.00	\$83.46

Apprentice - PAINTER Local 35 Zone 2 - Spray/Sandblast - New

Effective Date - 01/01/2023

Step	percent	Apprentice Base Wage	Health	Pension	Supplemental Unemployment	Total Rate
1	50	\$23.48	\$8.65	\$0.00	\$0.00	\$32.13
2	55	\$25.83	\$8.65	\$6.27	\$0.00	\$40.75
3	60	\$28.18	\$8.65	\$6.84	\$0.00	\$43.67
4	65	\$30.52	\$8.65	\$7.41	\$0.00	\$46.58
5	70	\$32.87	\$8.65	\$19.63	\$0.00	\$61.15
6	75	\$35.22	\$8.65	\$20.20	\$0.00	\$64.07
7	80	\$37.57	\$8.65	\$20.77	\$0.00	\$66.99
8	90	\$42.26	\$8.65	\$21.91	\$0.00	\$72.82

Effective Date - 07/01/2023

Step	percent	Apprentice Base Wage	Health	Pension	Supplemental Unemployment	Total Rate
1	50	\$24.08	\$8.65	\$0.00	\$0.00	\$32.73
2	55	\$26.49	\$8.65	\$6.27	\$0.00	\$41.41
3	60	\$28.90	\$8.65	\$6.84	\$0.00	\$44.39
4	65	\$31.30	\$8.65	\$7.41	\$0.00	\$47.36
5	70	\$33.71	\$8.65	\$19.63	\$0.00	\$61.99
6	75	\$36.12	\$8.65	\$20.20	\$0.00	\$64.97
7	80	\$38.53	\$8.65	\$20.77	\$0.00	\$67.95
8	90	\$43.34	\$8.65	\$21.91	\$0.00	\$73.90

Notes:

Steps are 750 hrs.

Apprentice to Journeyworker Ratio:1:1

PAINTER (SPRAY OR SANDBLAST, REPAINT)	01/01/2023	\$45.02	\$8.65	\$23.05	\$0.00	\$76.72
PAINTERS LOCAL 35 - ZONE 2	07/01/2023	\$46.22	\$8.65	\$23.05	\$0.00	\$77.92
	01/01/2024	\$47.42	\$8.65	\$23.05	\$0.00	\$79.12
	07/01/2024	\$48.62	\$8.65	\$23.05	\$0.00	\$80.32
	01/01/2025	\$49.82	\$8.65	\$23.05	\$0.00	\$81.52

**Apprentice - PAINTER Local 35 Zone 2 - Spray/Sandblast - Repaint**

Effective Date - 01/01/2023

Step	percent	Apprentice Base Wage	Health	Pension	Supplemental Unemployment	Total Rate
1	50	\$22.51	\$8.65	\$0.00	\$0.00	\$31.16
2	55	\$24.76	\$8.65	\$6.27	\$0.00	\$39.68
3	60	\$27.01	\$8.65	\$6.84	\$0.00	\$42.50
4	65	\$29.26	\$8.65	\$7.41	\$0.00	\$45.32
5	70	\$31.51	\$8.65	\$19.63	\$0.00	\$59.79
6	75	\$33.77	\$8.65	\$20.20	\$0.00	\$62.62
7	80	\$36.02	\$8.65	\$20.77	\$0.00	\$65.44
8	90	\$40.52	\$8.65	\$21.91	\$0.00	\$71.08

Effective Date - 07/01/2023

Step	percent	Apprentice Base Wage	Health	Pension	Supplemental Unemployment	Total Rate
1	50	\$23.11	\$8.65	\$0.00	\$0.00	\$31.76
2	55	\$25.42	\$8.65	\$6.27	\$0.00	\$40.34
3	60	\$27.73	\$8.65	\$6.84	\$0.00	\$43.22
4	65	\$30.04	\$8.65	\$19.06	\$0.00	\$57.75
5	70	\$32.35	\$8.65	\$19.63	\$0.00	\$60.63
6	75	\$34.67	\$8.65	\$20.20	\$0.00	\$63.52
7	80	\$36.98	\$8.65	\$20.77	\$0.00	\$66.40
8	90	\$41.60	\$8.65	\$21.91	\$0.00	\$72.16

**Notes:**

Steps are 750 hrs.

**Apprentice to Journeyworker Ratio:1:1**

PAINTER / TAPER (BRUSH, NEW) *	01/01/2023	\$45.56	\$8.65	\$23.05	\$0.00	\$77.26
* If 30% or more of surfaces to be painted are new construction, NEW paint rate shall be used. PAINTERS LOCAL 35 - ZONE 2	07/01/2023	\$46.76	\$8.65	\$23.05	\$0.00	\$78.46
	01/01/2024	\$47.96	\$8.65	\$23.05	\$0.00	\$79.66
	07/01/2024	\$49.16	\$8.65	\$23.05	\$0.00	\$80.86
	01/01/2025	\$50.36	\$8.65	\$23.05	\$0.00	\$82.06

Apprentice - PAINTER - Local 35 Zone 2 - BRUSH NEW

Effective Date - 01/01/2023

Step	percent	Apprentice Base Wage	Health	Pension	Supplemental Unemployment	Total Rate
1	50	\$22.78	\$8.65	\$0.00	\$0.00	\$31.43
2	55	\$25.06	\$8.65	\$6.27	\$0.00	\$39.98
3	60	\$27.34	\$8.65	\$6.84	\$0.00	\$42.83
4	65	\$29.61	\$8.65	\$7.41	\$0.00	\$45.67
5	70	\$31.89	\$8.65	\$19.63	\$0.00	\$60.17
6	75	\$34.17	\$8.65	\$20.20	\$0.00	\$63.02
7	80	\$36.45	\$8.65	\$20.77	\$0.00	\$65.87
8	90	\$41.00	\$8.65	\$21.91	\$0.00	\$71.56

Effective Date - 07/01/2023

Step	percent	Apprentice Base Wage	Health	Pension	Supplemental Unemployment	Total Rate
1	50	\$23.38	\$8.65	\$0.00	\$0.00	\$32.03
2	55	\$25.72	\$8.65	\$6.27	\$0.00	\$40.64
3	60	\$28.06	\$8.65	\$6.84	\$0.00	\$43.55
4	65	\$30.39	\$8.65	\$7.41	\$0.00	\$46.45
5	70	\$32.73	\$8.65	\$19.63	\$0.00	\$61.01
6	75	\$35.07	\$8.65	\$20.20	\$0.00	\$63.92
7	80	\$37.41	\$8.65	\$20.77	\$0.00	\$66.83
8	90	\$42.08	\$8.65	\$21.91	\$0.00	\$72.64

Notes:  
Steps are 750 hrs.

Apprentice to Journeyworker Ratio:1:1

PAINTER / TAPER (BRUSH, REPAINT)	01/01/2023	\$43.62	\$8.65	\$23.05	\$0.00	\$75.32
PAINTERS LOCAL 35 - ZONE 2	07/01/2023	\$44.82	\$8.65	\$23.05	\$0.00	\$76.52
	01/01/2024	\$46.02	\$8.65	\$23.05	\$0.00	\$77.72
	07/01/2024	\$47.22	\$8.65	\$23.05	\$0.00	\$78.92
	01/01/2025	\$48.42	\$8.65	\$23.05	\$0.00	\$80.12



**Classification**

**Effective Date    Base Wage    Health    Pension    Supplemental Unemployment    Total Rate**

**Apprentice - PAINTER Local 35 Zone 2 - BRUSH REPAINT**

**Effective Date - 01/01/2023**

Step	percent	Apprentice Base Wage	Health	Pension	Supplemental Unemployment	Total Rate
1	50	\$21.81	\$8.65	\$0.00	\$0.00	\$30.46
2	55	\$23.99	\$8.65	\$6.27	\$0.00	\$38.91
3	60	\$26.17	\$8.65	\$6.84	\$0.00	\$41.66
4	65	\$28.35	\$8.65	\$7.41	\$0.00	\$44.41
5	70	\$30.53	\$8.65	\$19.63	\$0.00	\$58.81
6	75	\$32.72	\$8.65	\$20.20	\$0.00	\$61.57
7	80	\$34.90	\$8.65	\$20.77	\$0.00	\$64.32
8	90	\$39.26	\$8.65	\$21.91	\$0.00	\$69.82

**Effective Date - 07/01/2023**

Step	percent	Apprentice Base Wage	Health	Pension	Supplemental Unemployment	Total Rate
1	50	\$22.41	\$8.65	\$0.00	\$0.00	\$31.06
2	55	\$24.65	\$8.65	\$6.27	\$0.00	\$39.57
3	60	\$26.89	\$8.65	\$6.84	\$0.00	\$42.38
4	65	\$29.13	\$8.65	\$7.41	\$0.00	\$45.19
5	70	\$31.37	\$8.65	\$19.63	\$0.00	\$59.65
6	75	\$33.62	\$8.65	\$20.20	\$0.00	\$62.47
7	80	\$35.86	\$8.65	\$20.77	\$0.00	\$65.28
8	90	\$40.34	\$8.65	\$21.91	\$0.00	\$70.90

**Notes:**

Steps are 750 hrs.

**Apprentice to Journeyworker Ratio:1:1**

PAINTER TRAFFIC MARKINGS (HEAVY/HIGHWAY)	12/01/2022	\$36.56	\$9.35	\$16.89	\$0.00	\$62.80
LABORERS - ZONE 2 (HEAVY & HIGHWAY)	06/01/2023	\$37.46	\$9.40	\$16.89	\$0.00	\$63.75
	12/01/2023	\$38.36	\$9.40	\$16.89	\$0.00	\$64.65
	06/01/2024	\$39.69	\$9.40	\$16.89	\$0.00	\$65.98
	12/01/2024	\$41.02	\$9.40	\$16.89	\$0.00	\$67.31
	06/01/2025	\$42.41	\$9.40	\$16.89	\$0.00	\$68.70
	12/01/2025	\$43.79	\$9.40	\$16.89	\$0.00	\$70.08
	06/01/2026	\$45.23	\$9.40	\$16.89	\$0.00	\$71.52
	12/01/2026	\$46.67	\$9.40	\$16.89	\$0.00	\$72.96

For apprentice rates see "Apprentice- LABORER (Heavy and Highway)

PANEL & PICKUP TRUCKS DRIVER TEAMSTERS JOINT COUNCIL NO. 10 ZONE B	12/01/2021	\$35.78	\$13.41	\$16.01	\$0.00	\$65.20
---	------------	---------	---------	---------	--------	---------

PIER AND DOCK CONSTRUCTOR (UNDERPINNING AND DECK) PILE DRIVER LOCAL 56 (ZONE 1)	08/01/2020	\$49.07	\$9.40	\$23.12	\$0.00	\$81.59
--	------------	---------	--------	---------	--------	---------

For apprentice rates see "Apprentice- PILE DRIVER"

PILE DRIVER PILE DRIVER LOCAL 56 (ZONE 1)	08/01/2020	\$49.07	\$9.40	\$23.12	\$0.00	\$81.59
--	------------	---------	--------	---------	--------	---------

**Classification**

**Effective Date    Base Wage    Health    Pension    Supplemental Unemployment    Total Rate**

**Apprentice - PILE DRIVER - Local 56 Zone 1**

**Effective Date - 08/01/2020**

Step	percent	Apprentice Base Wage	Health	Pension	Supplemental Unemployment	Total Rate
1	50	\$24.54	\$9.40	\$23.12	\$0.00	\$57.06
2	60	\$29.44	\$9.40	\$23.12	\$0.00	\$61.96
3	70	\$34.35	\$9.40	\$23.12	\$0.00	\$66.87
4	75	\$36.80	\$9.40	\$23.12	\$0.00	\$69.32
5	80	\$39.26	\$9.40	\$23.12	\$0.00	\$71.78
6	80	\$39.26	\$9.40	\$23.12	\$0.00	\$71.78
7	90	\$44.16	\$9.40	\$23.12	\$0.00	\$76.68
8	90	\$44.16	\$9.40	\$23.12	\$0.00	\$76.68

**Notes:**

% Indentured After 10/1/17; 45/45/55/55/70/70/80/80  
 Step 1&2 \$34.01/ 3&4 \$41.46/ 5&6 \$62.80/ 7&8 \$69.25

**Apprentice to Journeyworker Ratio:1:5**

<b>PIPELAYER</b> <i>LABORERS - ZONE 2</i>	12/01/2022	\$37.41	\$9.10	\$16.64	\$0.00	\$63.15
	06/01/2023	\$37.71	\$9.40	\$16.89	\$0.00	\$64.00
	12/01/2023	\$38.61	\$9.40	\$16.89	\$0.00	\$64.90

For apprentice rates see "Apprentice- LABORER"

<b>PIPELAYER (HEAVY &amp; HIGHWAY)</b> <i>LABORERS - ZONE 2 (HEAVY &amp; HIGHWAY)</i>	12/01/2022	\$36.81	\$9.35	\$16.89	\$0.00	\$63.05
	06/01/2023	\$37.71	\$9.40	\$16.89	\$0.00	\$64.00
	12/01/2023	\$38.61	\$9.40	\$16.89	\$0.00	\$64.90
	06/01/2024	\$39.94	\$9.40	\$16.89	\$0.00	\$66.23
	12/01/2024	\$41.27	\$9.40	\$16.89	\$0.00	\$67.56
	06/01/2025	\$42.66	\$9.40	\$16.89	\$0.00	\$68.95
	12/01/2025	\$44.04	\$9.40	\$16.89	\$0.00	\$70.33
	06/01/2026	\$45.48	\$9.40	\$16.89	\$0.00	\$71.77
	12/01/2026	\$46.92	\$9.40	\$16.89	\$0.00	\$73.21

For apprentice rates see "Apprentice- LABORER (Heavy and Highway)"

<b>PLUMBER &amp; PIPEFITTER</b> <i>PLUMBERS &amp; PIPEFITTERS LOCAL 51</i>	08/30/2021	\$46.49	\$10.15	\$19.95	\$0.00	\$76.59
---	------------	---------	---------	---------	--------	---------

**Classification**

**Effective Date    Base Wage    Health    Pension    Supplemental Unemployment    Total Rate**

**Apprentice - PLUMBER/PIPEFITTER - Local 51**

**Effective Date - 08/30/2021**

Step	percent	Apprentice Base Wage	Health	Pension	Supplemental Unemployment	Total Rate
1	40	\$18.60	\$10.15	\$2.50	\$0.00	\$31.25
2	50	\$23.25	\$10.15	\$2.50	\$0.00	\$35.90
3	60	\$27.89	\$10.15	\$8.80	\$0.00	\$46.84
4	70	\$32.54	\$10.15	\$14.08	\$0.00	\$56.77
5	80	\$37.19	\$10.15	\$17.60	\$0.00	\$64.94

**Notes:**  
Steps 2000hrs. Prior 9/1/05; 40/40/45/50/55/60/65/75/80/85

**Apprentice to Journeyworker Ratio:1:3**

PNEUMATIC CONTROLS (TEMP.) <i>PLUMBERS &amp; PIPEFITTERS LOCAL 51</i>	08/30/2021	\$46.49	\$10.15	\$19.95	\$0.00	\$76.59
--	------------	---------	---------	---------	--------	---------

For apprentice rates see "Apprentice- PIPEFITTER" or "PLUMBER/PIPEFITTER"

PNEUMATIC DRILL/TOOL OPERATOR <i>LABORERS - ZONE 2</i>	12/01/2022	\$37.41	\$9.10	\$16.64	\$0.00	\$63.15
	06/01/2023	\$37.71	\$9.40	\$16.89	\$0.00	\$64.00
	12/01/2023	\$38.61	\$9.40	\$16.89	\$0.00	\$64.90

For apprentice rates see "Apprentice- LABORER"

PNEUMATIC DRILL/TOOL OPERATOR (HEAVY & HIGHWAY) <i>LABORERS - ZONE 2 (HEAVY &amp; HIGHWAY)</i>	12/01/2022	\$36.81	\$9.35	\$16.89	\$0.00	\$63.05
	06/01/2023	\$37.71	\$9.40	\$16.89	\$0.00	\$64.00
	12/01/2023	\$38.61	\$9.40	\$16.89	\$0.00	\$64.90
	06/01/2024	\$39.94	\$9.40	\$16.89	\$0.00	\$66.23
	12/01/2024	\$41.27	\$9.40	\$16.89	\$0.00	\$67.56
	06/01/2025	\$42.66	\$9.40	\$16.89	\$0.00	\$68.95
	12/01/2025	\$44.04	\$9.40	\$16.89	\$0.00	\$70.33
	06/01/2026	\$45.48	\$9.40	\$16.89	\$0.00	\$71.77
	12/01/2026	\$46.92	\$9.40	\$16.89	\$0.00	\$73.21

For apprentice rates see "Apprentice- LABORER (Heavy and Highway)"

POWDERMAN & BLASTER <i>LABORERS - ZONE 2</i>	12/01/2022	\$38.16	\$9.10	\$16.64	\$0.00	\$63.90
	06/01/2023	\$38.46	\$9.40	\$16.89	\$0.00	\$64.75
	12/01/2023	\$39.36	\$9.40	\$16.89	\$0.00	\$65.65

For apprentice rates see "Apprentice- LABORER"

POWDERMAN & BLASTER (HEAVY & HIGHWAY) <i>LABORERS - ZONE 2 (HEAVY &amp; HIGHWAY)</i>	12/01/2022	\$37.56	\$9.35	\$16.89	\$0.00	\$63.80
	06/01/2023	\$38.46	\$9.40	\$16.89	\$0.00	\$64.75
	12/01/2023	\$39.36	\$9.40	\$16.89	\$0.00	\$65.65
	06/01/2024	\$40.69	\$9.40	\$16.89	\$0.00	\$66.98
	12/01/2024	\$42.02	\$9.40	\$16.89	\$0.00	\$68.31
	06/01/2025	\$43.41	\$9.40	\$16.89	\$0.00	\$69.70
	12/01/2025	\$44.79	\$9.40	\$16.89	\$0.00	\$71.08
	06/01/2026	\$46.23	\$9.40	\$16.89	\$0.00	\$72.52
	12/01/2026	\$47.67	\$9.40	\$16.89	\$0.00	\$73.96

For apprentice rates see "Apprentice- LABORER (Heavy and Highway)"

Classification	Effective Date	Base Wage	Health	Pension	Supplemental Unemployment	Total Rate
POWER SHOVEL/DERRICK/TRENCHING MACHINE <i>OPERATING ENGINEERS LOCAL 4</i>	12/01/2022	\$53.63	\$14.25	\$16.05	\$0.00	\$83.93
	06/01/2023	\$54.88	\$14.25	\$16.05	\$0.00	\$85.18
	12/01/2023	\$56.13	\$14.25	\$16.05	\$0.00	\$86.43
	06/01/2024	\$57.43	\$14.25	\$16.05	\$0.00	\$87.73
	12/01/2024	\$58.88	\$14.25	\$16.05	\$0.00	\$89.18
	06/01/2025	\$60.18	\$14.25	\$16.05	\$0.00	\$90.48
	12/01/2025	\$61.63	\$14.25	\$16.05	\$0.00	\$91.93
	06/01/2026	\$62.93	\$14.25	\$16.05	\$0.00	\$93.23
	12/01/2026	\$64.38	\$14.25	\$16.05	\$0.00	\$94.68
For apprentice rates see "Apprentice- OPERATING ENGINEERS"						
PUMP OPERATOR (CONCRETE) <i>OPERATING ENGINEERS LOCAL 4</i>	12/01/2022	\$53.63	\$14.25	\$16.05	\$0.00	\$83.93
	06/01/2023	\$54.88	\$14.25	\$16.05	\$0.00	\$85.18
	12/01/2023	\$56.13	\$14.25	\$16.05	\$0.00	\$86.43
	06/01/2024	\$57.43	\$14.25	\$16.05	\$0.00	\$87.73
	12/01/2024	\$58.88	\$14.25	\$16.05	\$0.00	\$89.18
	06/01/2025	\$60.18	\$14.25	\$16.05	\$0.00	\$90.48
	12/01/2025	\$61.63	\$14.25	\$16.05	\$0.00	\$91.93
	06/01/2026	\$62.93	\$14.25	\$16.05	\$0.00	\$93.23
	12/01/2026	\$64.38	\$14.25	\$16.05	\$0.00	\$94.68
For apprentice rates see "Apprentice- OPERATING ENGINEERS"						
PUMP OPERATOR (DEWATERING, OTHER) <i>OPERATING ENGINEERS LOCAL 4</i>	12/01/2022	\$35.08	\$14.25	\$16.05	\$0.00	\$65.38
	06/01/2023	\$35.90	\$14.25	\$16.05	\$0.00	\$66.20
	12/01/2023	\$36.72	\$14.25	\$16.05	\$0.00	\$67.02
	06/01/2024	\$37.57	\$14.25	\$16.05	\$0.00	\$67.87
	12/01/2024	\$38.52	\$14.25	\$16.05	\$0.00	\$68.82
	06/01/2025	\$39.37	\$14.25	\$16.05	\$0.00	\$69.67
	12/01/2025	\$40.32	\$14.25	\$16.05	\$0.00	\$70.62
	06/01/2026	\$41.18	\$14.25	\$16.05	\$0.00	\$71.48
	12/01/2026	\$42.13	\$14.25	\$16.05	\$0.00	\$72.43
For apprentice rates see "Apprentice- OPERATING ENGINEERS"						
READY-MIX CONCRETE DRIVER <i>TEAMSTERS 653 - Southeastern Concrete (Weymouth)</i>	05/01/2023	\$25.00	\$13.41	\$6.90	\$0.00	\$45.31
	08/01/2023	\$25.00	\$13.91	\$6.90	\$0.00	\$45.81
RECLAIMERS <i>OPERATING ENGINEERS LOCAL 4</i>	12/01/2022	\$53.05	\$14.25	\$16.05	\$0.00	\$83.35
	06/01/2023	\$54.29	\$14.25	\$16.05	\$0.00	\$84.59
	12/01/2023	\$55.53	\$14.25	\$16.05	\$0.00	\$85.83
	06/01/2024	\$56.81	\$14.25	\$16.05	\$0.00	\$87.11
	12/01/2024	\$58.25	\$14.25	\$16.05	\$0.00	\$88.55
	06/01/2025	\$59.53	\$14.25	\$16.05	\$0.00	\$89.83
	12/01/2025	\$60.97	\$14.25	\$16.05	\$0.00	\$91.27
	06/01/2026	\$62.25	\$14.25	\$16.05	\$0.00	\$92.55
	12/01/2026	\$63.69	\$14.25	\$16.05	\$0.00	\$93.99
For apprentice rates see "Apprentice- OPERATING ENGINEERS"						
RIDE-ON MOTORIZED BUGGY OPERATOR <i>LABORERS - ZONE 2</i>	12/01/2022	\$37.41	\$9.10	\$16.64	\$0.00	\$63.15
	06/01/2023	\$37.71	\$9.40	\$16.89	\$0.00	\$64.00
	12/01/2023	\$38.61	\$9.40	\$16.89	\$0.00	\$64.90
For apprentice rates see "Apprentice- LABORER"						

Classification	Effective Date	Base Wage	Health	Pension	Supplemental Unemployment	Total Rate
ROLLER/SPREADER/MULCHING MACHINE OPERATING ENGINEERS LOCAL 4	12/01/2022	\$53.05	\$14.25	\$16.05	\$0.00	\$83.35
	06/01/2023	\$54.29	\$14.25	\$16.05	\$0.00	\$84.59
	12/01/2023	\$55.53	\$14.25	\$16.05	\$0.00	\$85.83
	06/01/2024	\$56.81	\$14.25	\$16.05	\$0.00	\$87.11
	12/01/2024	\$58.25	\$14.25	\$16.05	\$0.00	\$88.55
	06/01/2025	\$59.53	\$14.25	\$16.05	\$0.00	\$89.83
	12/01/2025	\$60.97	\$14.25	\$16.05	\$0.00	\$91.27
	06/01/2026	\$62.25	\$14.25	\$16.05	\$0.00	\$92.55
	12/01/2026	\$63.69	\$14.25	\$16.05	\$0.00	\$93.99

For apprentice rates see "Apprentice- OPERATING ENGINEERS"

ROOFER (Inc.Roofing Waterproofing &Roofing Damproofg) ROOFERS LOCAL 33	02/01/2023	\$48.53	\$12.78	\$20.20	\$0.00	\$81.51
	08/01/2023	\$50.03	\$12.78	\$20.20	\$0.00	\$83.01
	02/01/2024	\$51.28	\$12.78	\$20.20	\$0.00	\$84.26
	08/01/2024	\$52.78	\$12.78	\$20.20	\$0.00	\$85.76
	02/01/2025	\$54.03	\$12.78	\$20.20	\$0.00	\$87.01
	08/01/2025	\$55.53	\$12.78	\$20.20	\$0.00	\$88.51
	02/01/2026	\$56.78	\$12.78	\$20.20	\$0.00	\$89.76

**Apprentice - ROOFER - Local 33**

Effective Date - 02/01/2023

Step	percent	Apprentice Base Wage	Health	Pension	Supplemental Unemployment	Total Rate
1	50	\$24.27	\$12.78	\$5.59	\$0.00	\$42.64
2	60	\$29.12	\$12.78	\$20.20	\$0.00	\$62.10
3	65	\$31.54	\$12.78	\$20.20	\$0.00	\$64.52
4	75	\$36.40	\$12.78	\$20.20	\$0.00	\$69.38
5	85	\$41.25	\$12.78	\$20.20	\$0.00	\$74.23

Effective Date - 08/01/2023

Step	percent	Apprentice Base Wage	Health	Pension	Supplemental Unemployment	Total Rate
1	50	\$25.02	\$12.78	\$5.59	\$0.00	\$43.39
2	60	\$30.02	\$12.78	\$20.20	\$0.00	\$63.00
3	65	\$32.52	\$12.78	\$20.20	\$0.00	\$65.50
4	75	\$37.52	\$12.78	\$20.20	\$0.00	\$70.50
5	85	\$42.53	\$12.78	\$20.20	\$0.00	\$75.51

Notes: \*\* 1:5, 2:6-10, the 1:10; Reroofing: 1:4, then 1:1  
 Step 1 is 2000 hrs.; Steps 2-5 are 1000 hrs.  
 (Hot Pitch Mechanics' receive \$1.00 hr. above ROOFER)

Apprentice to Journeyworker Ratio:\*\*

ROOFER SLATE / TILE / PRECAST CONCRETE ROOFERS LOCAL 33	02/01/2023	\$48.78	\$12.78	\$20.20	\$0.00	\$81.76
	08/01/2023	\$50.28	\$12.78	\$20.20	\$0.00	\$83.26
	02/01/2024	\$51.53	\$12.78	\$20.20	\$0.00	\$84.51
	08/01/2024	\$53.03	\$12.78	\$20.20	\$0.00	\$86.01
	02/01/2025	\$54.28	\$12.78	\$20.20	\$0.00	\$87.26
	08/01/2025	\$55.78	\$12.78	\$20.20	\$0.00	\$88.76
	02/01/2026	\$57.03	\$12.78	\$20.20	\$0.00	\$90.01

Classification	Effective Date	Base Wage	Health	Pension	Supplemental Unemployment	Total Rate
For apprentice rates see "Apprentice- ROOFER"						
SHEETMETAL WORKER	02/01/2023	\$55.31	\$14.11	\$26.64	\$2.83	\$98.89
SHEETMETAL WORKERS LOCAL 17 - A	08/01/2023	\$57.01	\$14.11	\$26.64	\$2.83	\$100.59
	02/01/2024	\$58.71	\$14.11	\$26.64	\$2.83	\$102.29
	08/01/2024	\$60.46	\$14.11	\$26.64	\$2.83	\$104.04
	02/01/2025	\$62.21	\$14.11	\$26.64	\$2.83	\$105.79
	08/01/2025	\$64.06	\$14.11	\$26.64	\$2.83	\$107.64
	02/01/2026	\$66.01	\$14.11	\$26.64	\$2.83	\$109.59

**Apprentice - SHEETMETAL WORKER - Local 17-A**

Effective Date - 02/01/2023

Step	percent	Apprentice Base Wage	Health	Pension	Supplemental Unemployment	Total Rate
1	42	\$23.23	\$14.11	\$6.13	\$0.00	\$43.47
2	42	\$23.23	\$14.11	\$6.13	\$0.00	\$43.47
3	47	\$26.00	\$14.11	\$11.90	\$1.54	\$53.55
4	47	\$26.00	\$14.11	\$11.90	\$1.54	\$53.55
5	52	\$28.76	\$14.11	\$12.88	\$1.65	\$57.40
6	52	\$28.76	\$14.11	\$13.13	\$1.65	\$57.65
7	60	\$33.19	\$14.11	\$14.54	\$1.83	\$63.67
8	65	\$35.95	\$14.11	\$15.52	\$1.94	\$67.52
9	75	\$41.48	\$14.11	\$17.48	\$2.16	\$75.23
10	85	\$47.01	\$14.11	\$18.94	\$2.36	\$82.42

Effective Date - 08/01/2023

Step	percent	Apprentice Base Wage	Health	Pension	Supplemental Unemployment	Total Rate
1	42	\$23.94	\$14.11	\$6.13	\$0.00	\$44.18
2	42	\$23.94	\$14.11	\$6.13	\$0.00	\$44.18
3	47	\$26.79	\$14.11	\$11.90	\$1.58	\$54.38
4	47	\$26.79	\$14.11	\$11.90	\$1.58	\$54.38
5	52	\$29.65	\$14.11	\$12.88	\$1.70	\$58.34
6	52	\$29.65	\$14.11	\$13.13	\$1.70	\$58.59
7	60	\$34.21	\$14.11	\$14.54	\$1.89	\$64.75
8	65	\$37.06	\$14.11	\$15.52	\$2.00	\$68.69
9	75	\$42.76	\$14.11	\$17.48	\$2.23	\$76.58
10	85	\$48.46	\$14.11	\$18.94	\$2.45	\$83.96

**Notes:**

Steps are 6 mos.

**Apprentice to Journeyworker Ratio:1:4**

SPECIALIZED EARTH MOVING EQUIP < 35 TONS TEAMSTERS JOINT COUNCIL NO. 10 ZONE B	12/01/2021	\$36.24	\$13.41	\$16.01	\$0.00	\$65.66
SPECIALIZED EARTH MOVING EQUIP > 35 TONS TEAMSTERS JOINT COUNCIL NO. 10 ZONE B	12/01/2021	\$36.53	\$13.41	\$16.01	\$0.00	\$65.95

Classification	Effective Date	Base Wage	Health	Pension	Supplemental Unemployment	Total Rate
SPRINKLER FITTER	03/01/2023	\$66.20	\$10.90	\$23.20	\$0.00	\$100.30
SPRINKLER FITTERS LOCAL 550 - (Section A) Zone 1	10/01/2023	\$67.95	\$10.90	\$23.20	\$0.00	\$102.05
	03/01/2024	\$69.75	\$10.90	\$23.20	\$0.00	\$103.85
	10/01/2024	\$71.55	\$10.90	\$23.20	\$0.00	\$105.65
	03/01/2025	\$73.35	\$10.90	\$23.20	\$0.00	\$107.45

**Apprentice - SPRINKLER FITTER - Local 550 (Section A) Zone 1**

Effective Date - 03/01/2023

Step	percent	Apprentice Base Wage	Health	Pension	Supplemental Unemployment	Total Rate
1	35	\$23.17	\$10.90	\$9.70	\$0.00	\$43.77
2	40	\$26.48	\$10.90	\$9.70	\$0.00	\$47.08
3	45	\$29.79	\$10.90	\$9.70	\$0.00	\$50.39
4	50	\$33.10	\$10.90	\$9.70	\$0.00	\$53.70
5	55	\$36.41	\$10.90	\$9.70	\$0.00	\$57.01
6	60	\$39.72	\$10.90	\$11.20	\$0.00	\$61.82
7	65	\$43.03	\$10.90	\$11.20	\$0.00	\$65.13
8	70	\$46.34	\$10.90	\$11.20	\$0.00	\$68.44
9	75	\$49.65	\$10.90	\$11.20	\$0.00	\$71.75
10	80	\$52.96	\$10.90	\$11.20	\$0.00	\$75.06

Effective Date - 10/01/2023

Step	percent	Apprentice Base Wage	Health	Pension	Supplemental Unemployment	Total Rate
1	35	\$23.78	\$10.90	\$9.70	\$0.00	\$44.38
2	40	\$27.18	\$10.90	\$9.70	\$0.00	\$47.78
3	45	\$30.58	\$10.90	\$9.70	\$0.00	\$51.18
4	50	\$33.98	\$10.90	\$9.70	\$0.00	\$54.58
5	55	\$37.37	\$10.90	\$9.70	\$0.00	\$57.97
6	60	\$40.77	\$10.90	\$11.20	\$0.00	\$62.87
7	65	\$44.17	\$10.90	\$11.20	\$0.00	\$66.27
8	70	\$47.57	\$10.90	\$11.20	\$0.00	\$69.67
9	75	\$50.96	\$10.90	\$11.20	\$0.00	\$73.06
10	80	\$54.36	\$10.90	\$11.20	\$0.00	\$76.46

Notes: Apprentice entered prior 9/30/10:  
 40/45/50/55/60/65/70/75/80/85  
 Steps are 850 hours  
 Apprentice to Journeyworker Ratio:1:3

Classification	Effective Date	Base Wage	Health	Pension	Supplemental Unemployment	Total Rate
STEAM BOILER OPERATOR <i>OPERATING ENGINEERS LOCAL 4</i>	12/01/2022	\$53.05	\$14.25	\$16.05	\$0.00	\$83.35
	06/01/2023	\$54.29	\$14.25	\$16.05	\$0.00	\$84.59
	12/01/2023	\$55.53	\$14.25	\$16.05	\$0.00	\$85.83
	06/01/2024	\$56.81	\$14.25	\$16.05	\$0.00	\$87.11
	12/01/2024	\$58.25	\$14.25	\$16.05	\$0.00	\$88.55
	06/01/2025	\$59.53	\$14.25	\$16.05	\$0.00	\$89.83
	12/01/2025	\$60.97	\$14.25	\$16.05	\$0.00	\$91.27
	06/01/2026	\$62.25	\$14.25	\$16.05	\$0.00	\$92.55
	12/01/2026	\$63.69	\$14.25	\$16.05	\$0.00	\$93.99

For apprentice rates see "Apprentice- OPERATING ENGINEERS"

TAMPERS, SELF-PROPELLED OR TRACTOR DRAWN <i>OPERATING ENGINEERS LOCAL 4</i>	12/01/2022	\$53.05	\$14.25	\$16.05	\$0.00	\$83.35
	06/01/2023	\$54.29	\$14.25	\$16.05	\$0.00	\$84.59
	12/01/2023	\$55.53	\$14.25	\$16.05	\$0.00	\$85.83
	06/01/2024	\$56.81	\$14.25	\$16.05	\$0.00	\$87.11
	12/01/2024	\$58.25	\$14.25	\$16.05	\$0.00	\$88.55
	06/01/2025	\$59.53	\$14.25	\$16.05	\$0.00	\$89.83
	12/01/2025	\$60.97	\$14.25	\$16.05	\$0.00	\$91.27
	06/01/2026	\$62.25	\$14.25	\$16.05	\$0.00	\$92.55
	12/01/2026	\$63.69	\$14.25	\$16.05	\$0.00	\$93.99

For apprentice rates see "Apprentice- OPERATING ENGINEERS"

TELECOMMUNICATION TECHNICIAN <i>ELECTRICIANS LOCAL 223</i>	09/01/2022	\$38.16	\$11.25	\$13.31	\$0.00	\$62.72
	09/01/2023	\$39.40	\$11.50	\$13.91	\$0.00	\$64.81
	09/01/2024	\$40.69	\$11.75	\$14.53	\$0.00	\$66.97

**Apprentice - TELECOMMUNICATION TECHNICIAN - Local 223**

**Effective Date - 09/01/2022**

Step	percent	Apprentice Base Wage	Health	Pension	Supplemental Unemployment	Total Rate
1	0	\$0.00	\$0.00	\$0.00	\$0.00	\$0.00

Notes: See Electrician Apprentice Wages

Telecom Apprentice Wages shall be the same as the Electrician Apprentice Wages

Apprentice to Journeyworker Ratio:2:3\*\*\*

TERRAZZO FINISHERS <i>BRICKLAYERS LOCAL 3 - MARBLE &amp; TILE</i>	02/01/2023	\$59.29	\$11.49	\$22.34	\$0.00	\$93.12
	08/01/2023	\$61.34	\$11.49	\$22.34	\$0.00	\$95.17
	02/01/2024	\$62.59	\$11.49	\$22.34	\$0.00	\$96.42
	08/01/2024	\$64.69	\$11.49	\$22.34	\$0.00	\$98.52
	02/01/2025	\$65.99	\$11.49	\$22.34	\$0.00	\$99.82
	08/01/2025	\$68.14	\$11.49	\$22.34	\$0.00	\$101.97
	02/01/2026	\$69.49	\$11.49	\$22.34	\$0.00	\$103.32
	08/01/2026	\$71.69	\$11.49	\$22.34	\$0.00	\$105.52
	02/01/2027	\$73.09	\$11.49	\$22.34	\$0.00	\$106.92



Apprentice - TERRAZZO FINISHER - Local 3 Marble & Tile

Effective Date - 02/01/2023

Step	percent	Apprentice Base Wage	Health	Pension	Supplemental Unemployment	Total Rate
1	50	\$29.65	\$11.49	\$22.34	\$0.00	\$63.48
2	60	\$35.57	\$11.49	\$22.34	\$0.00	\$69.40
3	70	\$41.50	\$11.49	\$22.34	\$0.00	\$75.33
4	80	\$47.43	\$11.49	\$22.34	\$0.00	\$81.26
5	90	\$53.36	\$11.49	\$22.34	\$0.00	\$87.19

Effective Date - 08/01/2023

Step	percent	Apprentice Base Wage	Health	Pension	Supplemental Unemployment	Total Rate
1	50	\$30.67	\$11.49	\$22.34	\$0.00	\$64.50
2	60	\$36.80	\$11.49	\$22.34	\$0.00	\$70.63
3	70	\$42.94	\$11.49	\$22.34	\$0.00	\$76.77
4	80	\$49.07	\$11.49	\$22.34	\$0.00	\$82.90
5	90	\$55.21	\$11.49	\$22.34	\$0.00	\$89.04

Notes:

Apprentice to Journeyworker Ratio:1:3

TEST BORING DRILLER	12/01/2022	\$46.58	\$9.35	\$17.97	\$0.00	\$73.90
LABORERS - FOUNDATION AND MARINE	06/01/2023	\$47.58	\$9.40	\$17.97	\$0.00	\$74.95
	12/01/2023	\$48.83	\$9.40	\$17.97	\$0.00	\$76.20
	06/01/2024	\$50.31	\$9.40	\$17.97	\$0.00	\$77.68
	12/01/2024	\$51.78	\$9.40	\$17.97	\$0.00	\$79.15
	06/01/2025	\$53.28	\$9.40	\$17.97	\$0.00	\$80.65
	12/01/2025	\$54.78	\$9.40	\$17.97	\$0.00	\$82.15
	06/01/2026	\$56.33	\$9.40	\$17.97	\$0.00	\$83.70
	12/01/2026	\$57.83	\$9.40	\$17.97	\$0.00	\$85.20

For apprentice rates see "Apprentice- LABORER"

TEST BORING DRILLER HELPER	12/01/2022	\$42.70	\$9.35	\$17.97	\$0.00	\$70.02
LABORERS - FOUNDATION AND MARINE	06/01/2023	\$43.70	\$9.40	\$17.97	\$0.00	\$71.07
	12/01/2023	\$44.95	\$9.40	\$17.97	\$0.00	\$72.32
	06/01/2024	\$46.43	\$9.40	\$17.97	\$0.00	\$73.80
	12/01/2024	\$47.90	\$9.40	\$17.97	\$0.00	\$75.27
	06/01/2025	\$49.40	\$9.40	\$17.97	\$0.00	\$76.77
	12/01/2025	\$50.90	\$9.40	\$17.97	\$0.00	\$78.27
	06/01/2026	\$52.45	\$9.40	\$17.97	\$0.00	\$79.82
	12/01/2026	\$53.95	\$9.40	\$17.97	\$0.00	\$81.32

For apprentice rates see "Apprentice- LABORER"

Classification	Effective Date	Base Wage	Health	Pension	Supplemental Unemployment	Total Rate
TEST BORING LABORER	12/01/2022	\$42.58	\$9.35	\$17.97	\$0.00	\$69.90
<i>LABORERS - FOUNDATION AND MARINE</i>	06/01/2023	\$43.58	\$9.40	\$17.97	\$0.00	\$70.95
	12/01/2023	\$44.83	\$9.40	\$17.97	\$0.00	\$72.20
	06/01/2024	\$46.31	\$9.40	\$17.97	\$0.00	\$73.68
	12/01/2024	\$47.78	\$9.40	\$17.97	\$0.00	\$75.15
	06/01/2025	\$49.28	\$9.40	\$17.97	\$0.00	\$76.65
	12/01/2025	\$50.78	\$9.40	\$17.97	\$0.00	\$78.15
	06/01/2026	\$52.33	\$9.40	\$17.97	\$0.00	\$79.70
	12/01/2026	\$53.83	\$9.40	\$17.97	\$0.00	\$81.20
For apprentice rates see "Apprentice- LABORER"						
TRACTORS/PORTABLE STEAM GENERATORS	12/01/2022	\$53.05	\$14.25	\$16.05	\$0.00	\$83.35
<i>OPERATING ENGINEERS LOCAL 4</i>	06/01/2023	\$54.29	\$14.25	\$16.05	\$0.00	\$84.59
	12/01/2023	\$55.53	\$14.25	\$16.05	\$0.00	\$85.83
	06/01/2024	\$56.81	\$14.25	\$16.05	\$0.00	\$87.11
	12/01/2024	\$58.25	\$14.25	\$16.05	\$0.00	\$88.55
	06/01/2025	\$59.53	\$14.25	\$16.05	\$0.00	\$89.83
	12/01/2025	\$60.97	\$14.25	\$16.05	\$0.00	\$91.27
	06/01/2026	\$62.25	\$14.25	\$16.05	\$0.00	\$92.55
	12/01/2026	\$63.69	\$14.25	\$16.05	\$0.00	\$93.99
For apprentice rates see "Apprentice- OPERATING ENGINEERS"						
TRAILERS FOR EARTH MOVING EQUIPMENT	12/01/2021	\$36.82	\$13.41	\$16.01	\$0.00	\$66.24
<i>TEAMSTERS JOINT COUNCIL NO. 10 ZONE B</i>						
TUNNEL WORK - COMPRESSED AIR	12/01/2022	\$54.81	\$9.35	\$18.42	\$0.00	\$82.58
<i>LABORERS (COMPRESSED AIR)</i>	06/01/2023	\$55.81	\$9.40	\$18.42	\$0.00	\$83.63
	12/01/2023	\$57.06	\$9.40	\$18.42	\$0.00	\$84.88
	06/01/2024	\$58.54	\$9.40	\$18.42	\$0.00	\$86.36
	12/01/2024	\$60.01	\$9.40	\$18.42	\$0.00	\$87.83
	06/01/2025	\$61.51	\$9.40	\$18.42	\$0.00	\$89.33
	12/01/2025	\$63.01	\$9.40	\$18.42	\$0.00	\$90.83
	06/01/2026	\$64.56	\$9.40	\$18.42	\$0.00	\$92.38
	12/01/2026	\$66.06	\$9.40	\$18.42	\$0.00	\$93.88
For apprentice rates see "Apprentice- LABORER"						
TUNNEL WORK - COMPRESSED AIR (HAZ. WASTE)	12/01/2022	\$56.81	\$9.35	\$18.42	\$0.00	\$84.58
<i>LABORERS (COMPRESSED AIR)</i>	06/01/2023	\$57.81	\$9.40	\$18.42	\$0.00	\$85.63
	12/01/2023	\$59.06	\$9.40	\$18.42	\$0.00	\$86.88
	06/01/2024	\$60.54	\$9.40	\$18.42	\$0.00	\$88.36
	12/01/2024	\$62.01	\$9.40	\$18.42	\$0.00	\$89.83
	06/01/2025	\$63.51	\$9.40	\$18.42	\$0.00	\$91.33
	12/01/2025	\$65.01	\$9.40	\$18.42	\$0.00	\$92.83
	06/01/2026	\$66.56	\$9.40	\$18.42	\$0.00	\$94.38
	12/01/2026	\$68.06	\$9.40	\$18.42	\$0.00	\$95.88
For apprentice rates see "Apprentice- LABORER"						

Classification	Effective Date	Base Wage	Health	Pension	Supplemental Unemployment	Total Rate
TUNNEL WORK - FREE AIR LABORERS (FREE AIR TUNNEL)	12/01/2022	\$46.88	\$9.35	\$18.42	\$0.00	\$74.65
	06/01/2023	\$47.88	\$9.40	\$18.42	\$0.00	\$75.70
	12/01/2023	\$49.13	\$9.40	\$18.42	\$0.00	\$76.95
	06/01/2024	\$50.61	\$9.40	\$18.42	\$0.00	\$78.43
	12/01/2024	\$52.08	\$9.40	\$18.42	\$0.00	\$79.90
	06/01/2025	\$53.58	\$9.40	\$18.42	\$0.00	\$81.40
	12/01/2025	\$55.08	\$9.40	\$18.42	\$0.00	\$82.90
	06/01/2026	\$56.63	\$9.40	\$18.42	\$0.00	\$84.45
	12/01/2026	\$58.13	\$9.40	\$18.42	\$0.00	\$85.95
For apprentice rates see "Apprentice- LABORER"						
TUNNEL WORK - FREE AIR (HAZ. WASTE) LABORERS (FREE AIR TUNNEL)	12/01/2022	\$48.88	\$9.35	\$18.42	\$0.00	\$76.65
	06/01/2023	\$49.88	\$9.40	\$18.42	\$0.00	\$77.70
	12/01/2023	\$51.13	\$9.40	\$18.42	\$0.00	\$78.95
	06/01/2024	\$52.61	\$9.40	\$18.42	\$0.00	\$80.43
	12/01/2024	\$54.08	\$9.40	\$18.42	\$0.00	\$81.90
	06/01/2025	\$55.58	\$9.40	\$18.42	\$0.00	\$83.40
	12/01/2025	\$57.08	\$9.40	\$18.42	\$0.00	\$84.90
	06/01/2026	\$58.63	\$9.40	\$18.42	\$0.00	\$86.45
	12/01/2026	\$60.13	\$9.40	\$18.42	\$0.00	\$87.95
For apprentice rates see "Apprentice- LABORER"						
VAC-HAUL TEAMSTERS JOINT COUNCIL NO. 10 ZONE B	12/01/2021	\$36.24	\$13.41	\$16.01	\$0.00	\$65.66
WAGON DRILL OPERATOR LABORERS - ZONE 2	12/01/2022	\$37.41	\$9.10	\$16.64	\$0.00	\$63.15
	06/01/2023	\$37.71	\$9.40	\$16.89	\$0.00	\$64.00
	12/01/2023	\$38.61	\$9.40	\$16.89	\$0.00	\$64.90
For apprentice rates see "Apprentice- LABORER"						
WAGON DRILL OPERATOR (HEAVY & HIGHWAY) LABORERS - ZONE 2 (HEAVY & HIGHWAY)	12/01/2022	\$36.81	\$9.35	\$16.89	\$0.00	\$63.05
	06/01/2023	\$37.71	\$9.40	\$16.89	\$0.00	\$64.00
	12/01/2023	\$38.61	\$9.40	\$16.89	\$0.00	\$64.90
	06/01/2024	\$39.94	\$9.40	\$16.89	\$0.00	\$66.23
	12/01/2024	\$41.27	\$9.40	\$16.89	\$0.00	\$67.56
	06/01/2025	\$42.66	\$9.40	\$16.89	\$0.00	\$68.95
	12/01/2025	\$44.04	\$9.40	\$16.89	\$0.00	\$70.33
	06/01/2026	\$45.48	\$9.40	\$16.89	\$0.00	\$71.77
	12/01/2026	\$46.92	\$9.40	\$16.89	\$0.00	\$73.21
For apprentice rates see "Apprentice- LABORER (Heavy and Highway)"						
WASTE WATER PUMP OPERATOR OPERATING ENGINEERS LOCAL 4	12/01/2022	\$53.63	\$14.25	\$16.05	\$0.00	\$83.93
	06/01/2023	\$54.88	\$14.25	\$16.05	\$0.00	\$85.18
	12/01/2023	\$56.13	\$14.25	\$16.05	\$0.00	\$86.43
	06/01/2024	\$57.43	\$14.25	\$16.05	\$0.00	\$87.73
	12/01/2024	\$58.88	\$14.25	\$16.05	\$0.00	\$89.18
	06/01/2025	\$60.18	\$14.25	\$16.05	\$0.00	\$90.48
	12/01/2025	\$61.63	\$14.25	\$16.05	\$0.00	\$91.93
	06/01/2026	\$62.93	\$14.25	\$16.05	\$0.00	\$93.23
	12/01/2026	\$64.38	\$14.25	\$16.05	\$0.00	\$94.68
For apprentice rates see "Apprentice- OPERATING ENGINEERS"						

Classification	Effective Date	Base Wage	Health	Pension	Supplemental Unemployment	Total Rate
WATER METER INSTALLER PLUMBERS & PIPEFITTERS LOCAL 51	08/30/2021	\$46.49	\$10.15	\$19.95	\$0.00	\$76.59

For apprentice rates see "Apprentice- PLUMBER/PIPEFITTER" or "PLUMBER/GASFITTER"

**Additional Apprentice Information:**

Minimum wage rates for apprentices employed on public works projects are listed above as a percentage of the pre-determined hourly wage rate established by the Commissioner under the provisions of the M.G.L. c. 149, ss. 26-27D. Apprentice ratios are established by the Division of Apprenticeship Training pursuant to M.G.L. c. 23, ss. 11E-11L.

All apprentices must be registered with the Division of Apprenticeship Training in accordance with M.G.L. c. 23, ss. 11E-11L.

All steps are six months (1000 hours.)

Ratios are expressed in allowable number of apprentices to journeymen or fraction thereof, unless otherwise specified.

\*\* Multiple ratios are listed in the comment field.

\*\*\* APP to JM; 1:1, 2:2, 2:3, 3:4, 4:4, 4:5, 4:6, 5:7, 6:7, 6:8, 6:9, 7:10, 8:10, 8:11, 8:12, 9:13, 10:13, 10:14, etc.

\*\*\*\* APP to JM; 1:1, 1:2, 2:3, 2:4, 3:5, 4:6, 4:7, 5:8, 6:9, 6:10, 7:11, 8:12, 8:13, 9:14, 10:15, 10:16, etc.