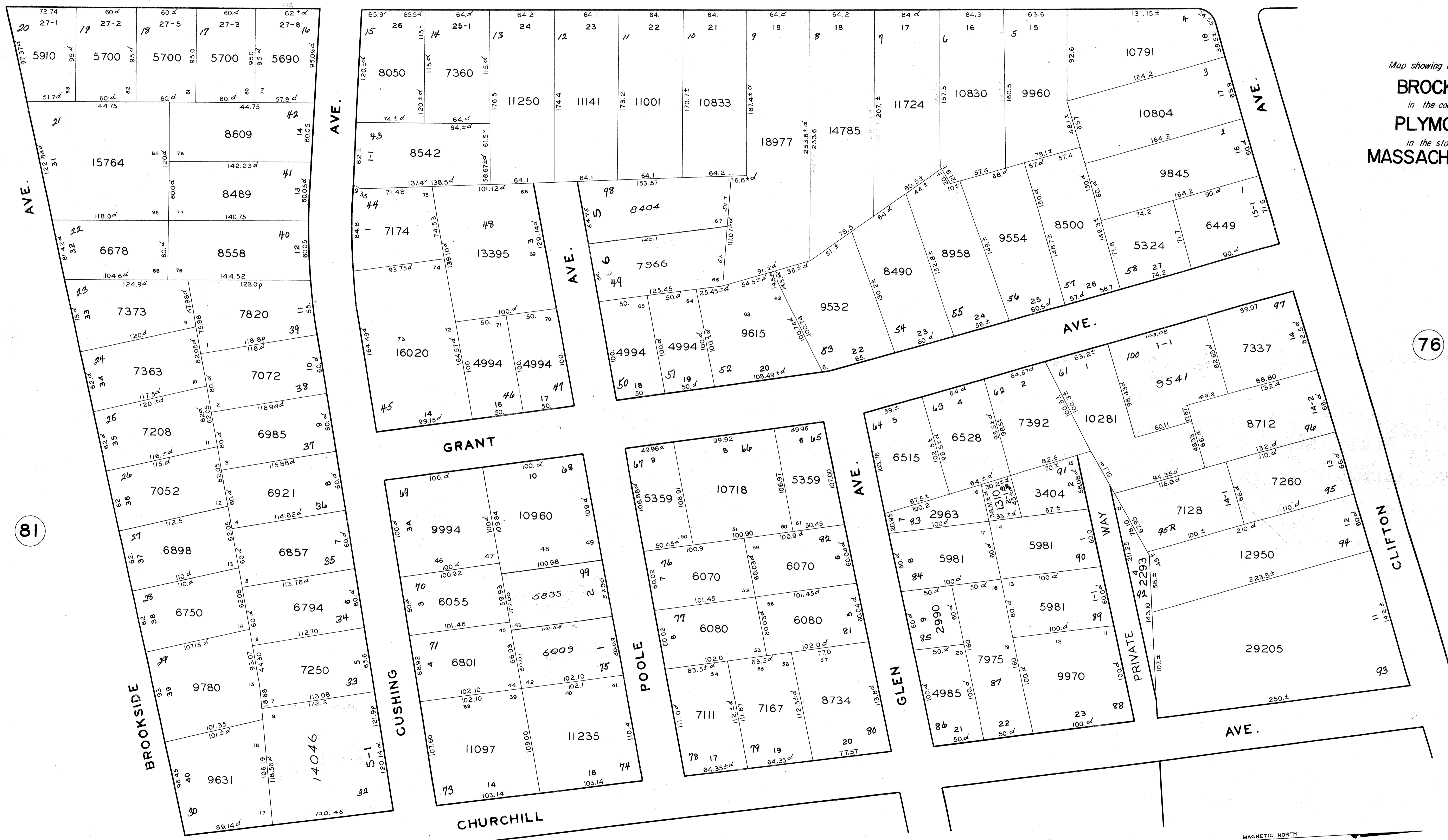


Map showing a section of  
**BROCKTON**  
in the county of,  
**PLYMOUTH**  
in the state of,  
**MASSACHUSETTS**

COPELAND

ST.



TRACED BY PLANCKINSAS SEPT. 20, 1977.  
CHECKED BY CRAIG YOUNG JAN. 6, 1978

MAGNETIC NORTH

FROM  
CITY ENGINEER'S OFFICE  
SCALE 1 INCH = 40 FEET