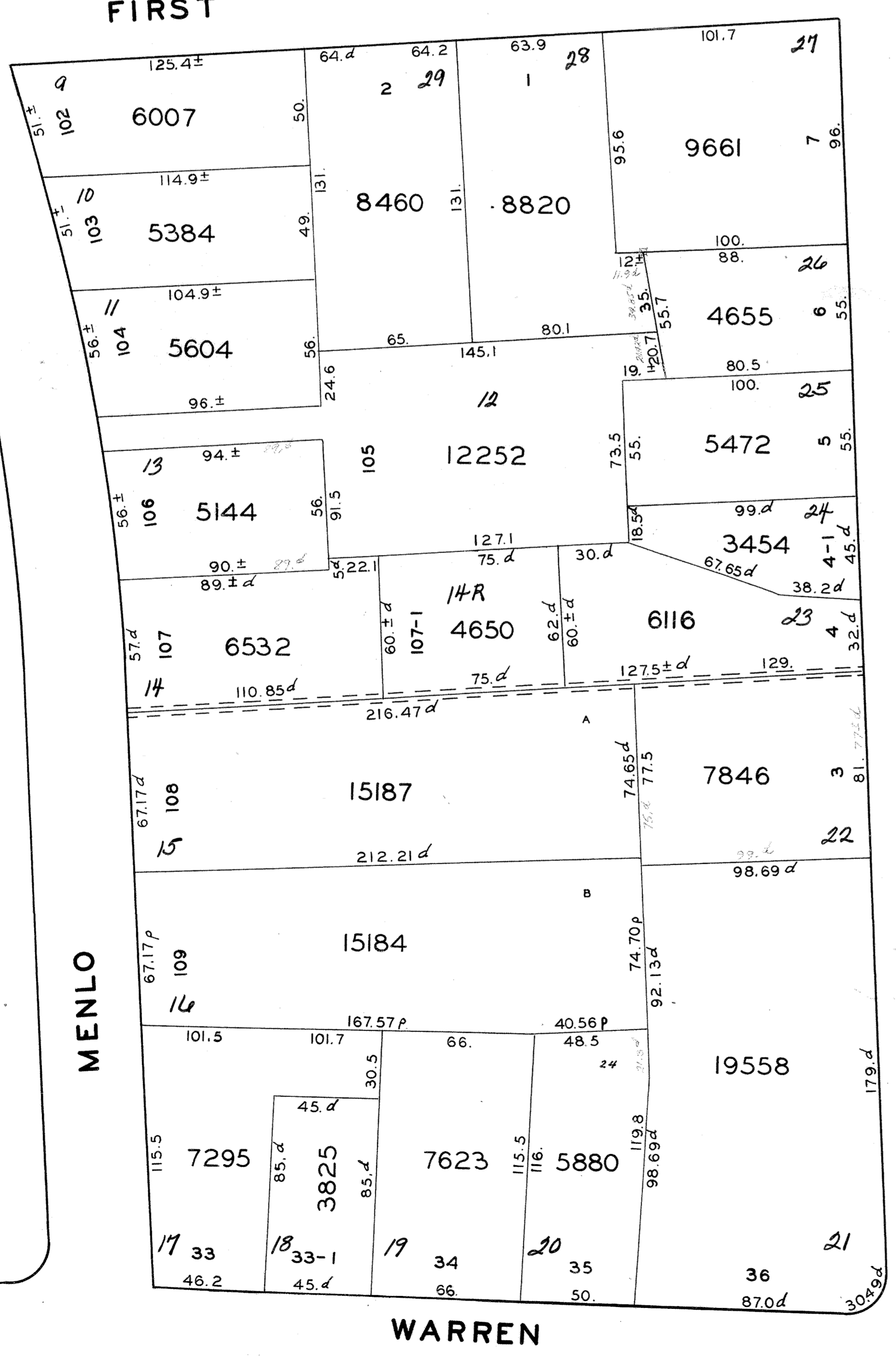
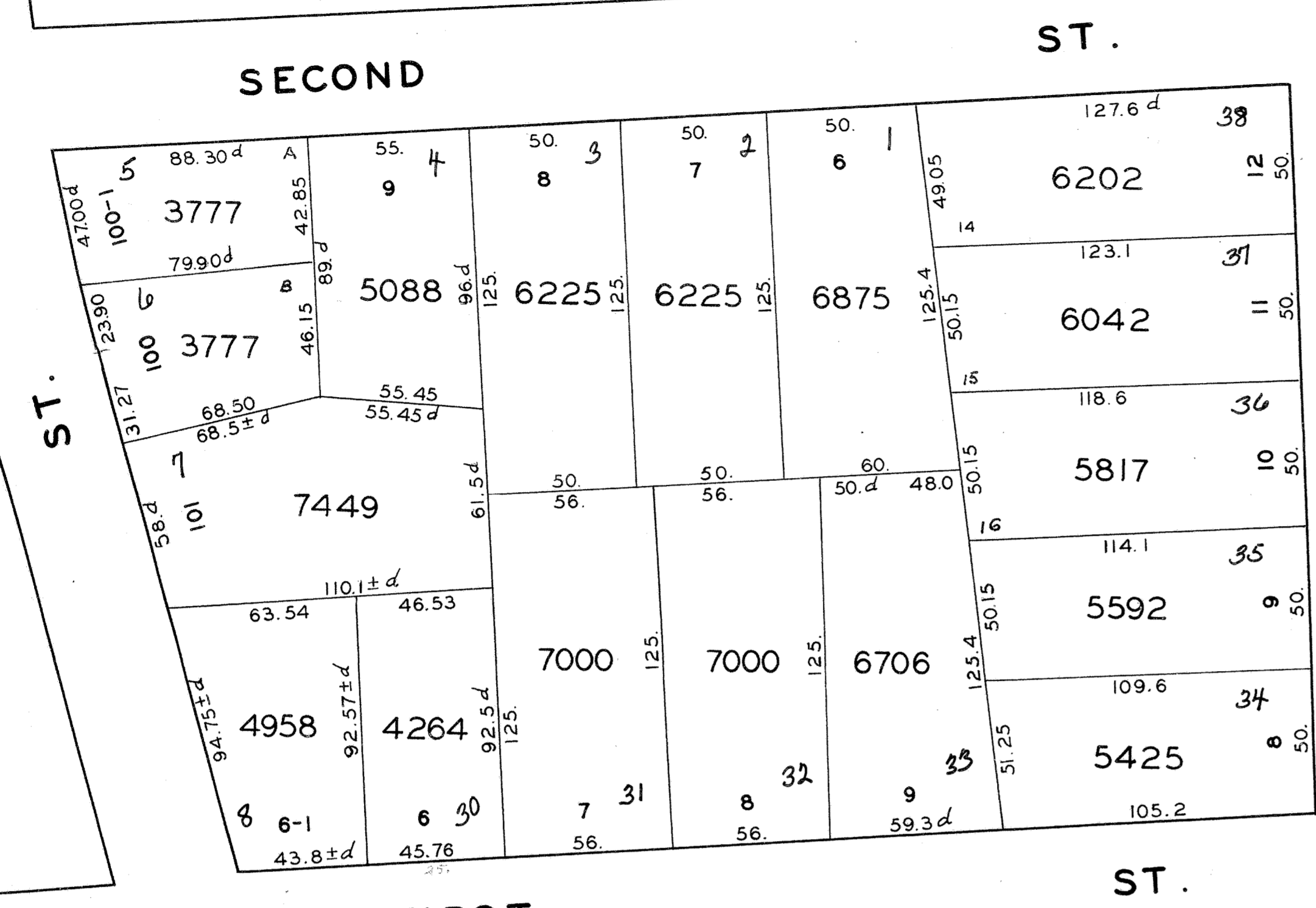
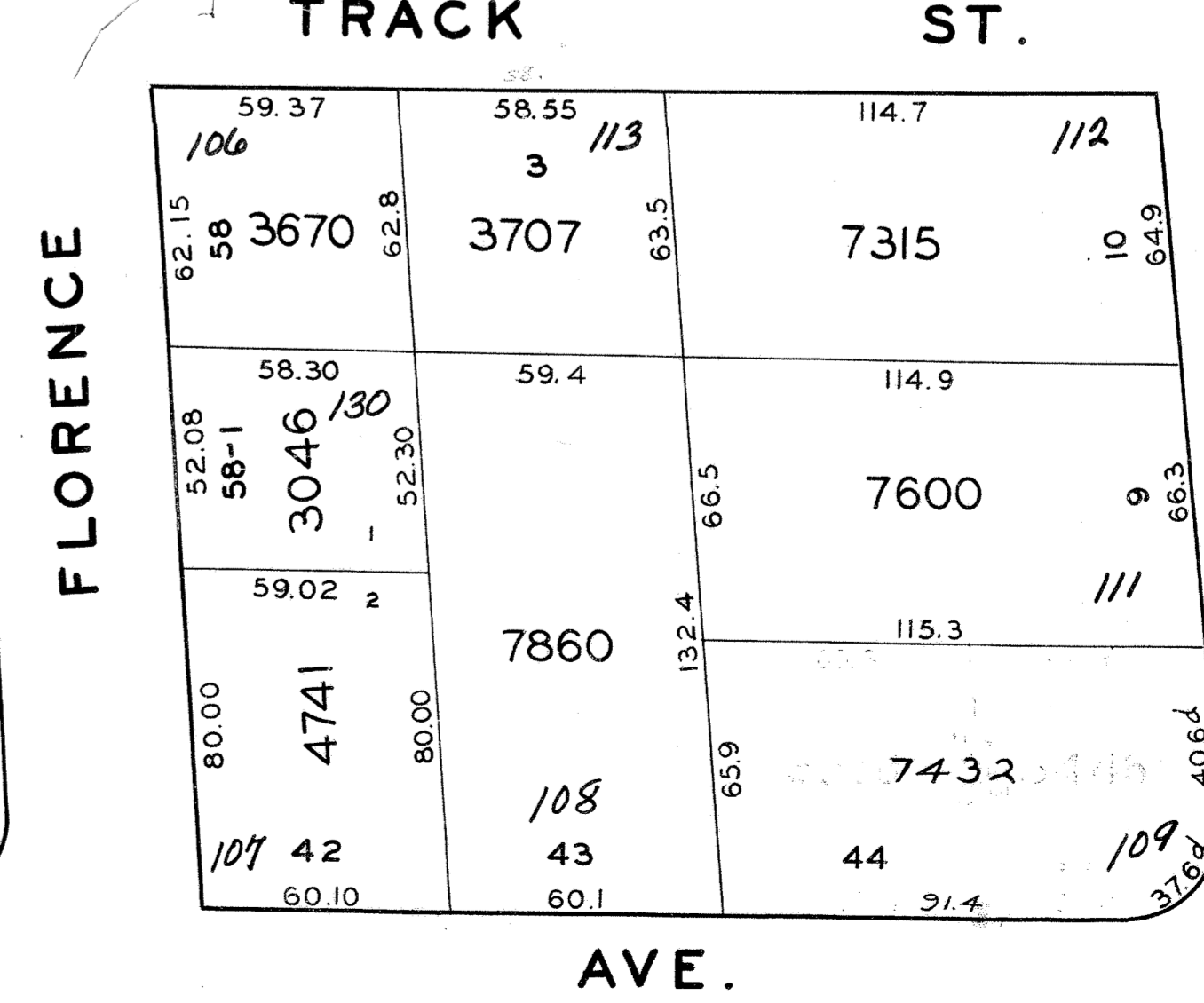
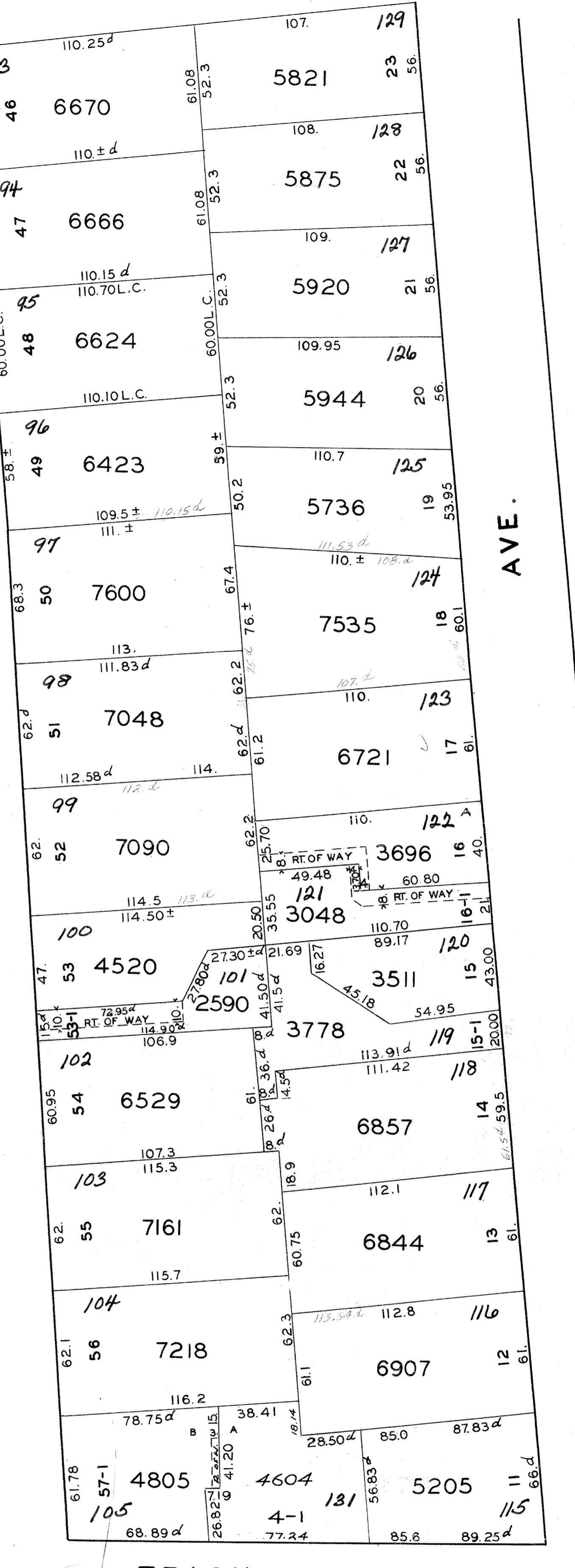
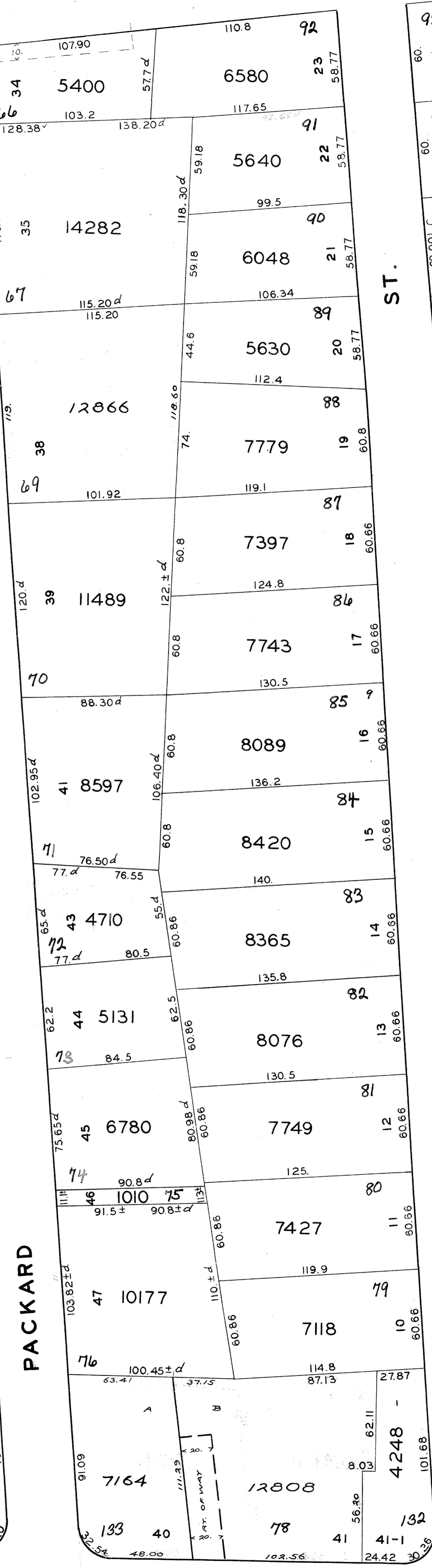
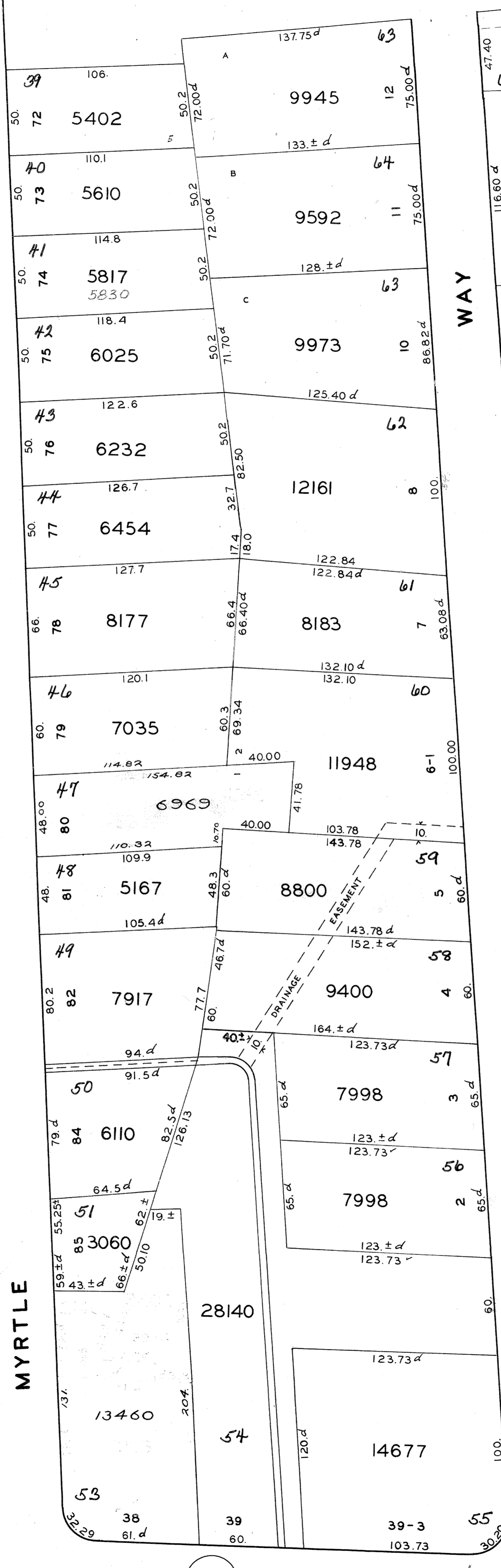


MAGNETIC NORTH



FROM CITY ENGINEER'S OFFICE SCALE 1 INCH = 40 FEET

TRACED BY PAUL JANČAUSKAS, AUG. 31, 1977. CHECKED BY CRAIG YOUNG, JAN. 10, 1978.



Map showing a section of, **BROCKTON** In the county of, **PLYMOUTH** In the state of, **MASSACHUSETTS**

FLORENCE ST.

FOREST AVE.