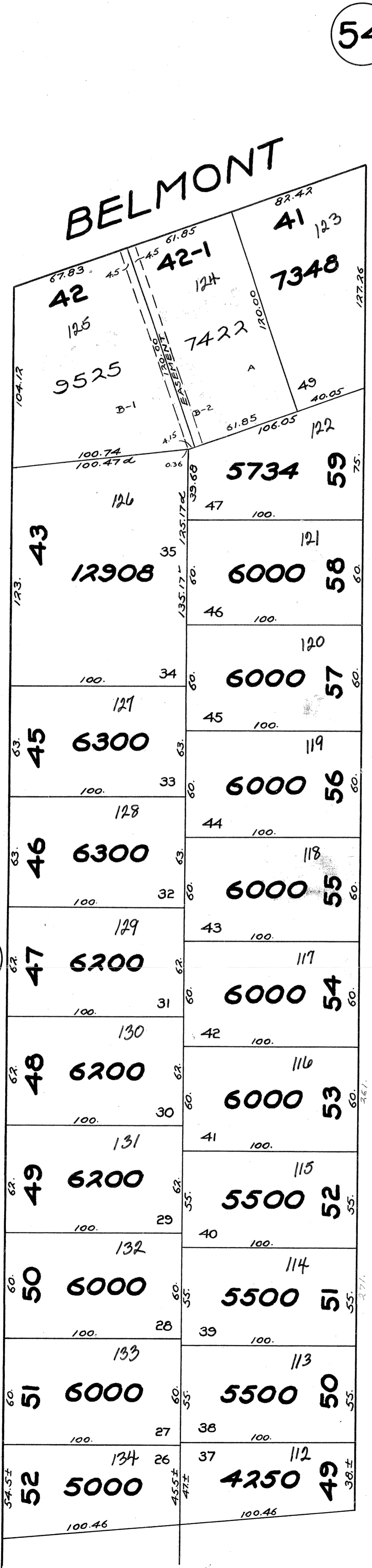


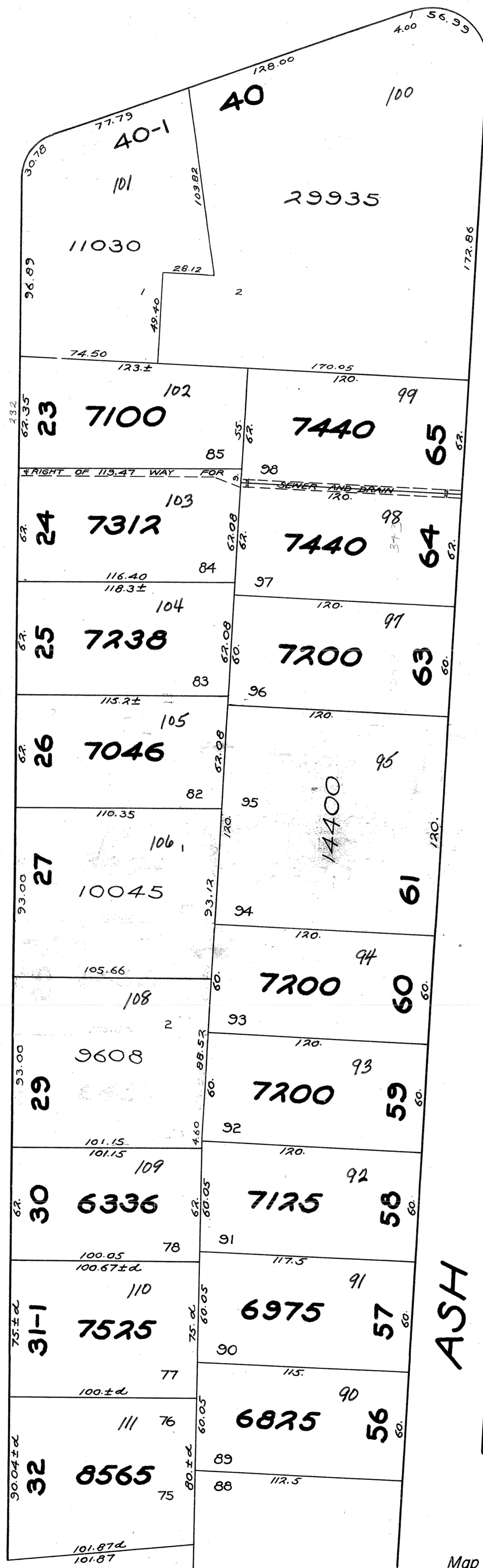
Traced by R.A. Fullerton March 17, 1964  
Checked by E.C. Heath & R.A.F. March 17, 1964

MORaine ST. (29)

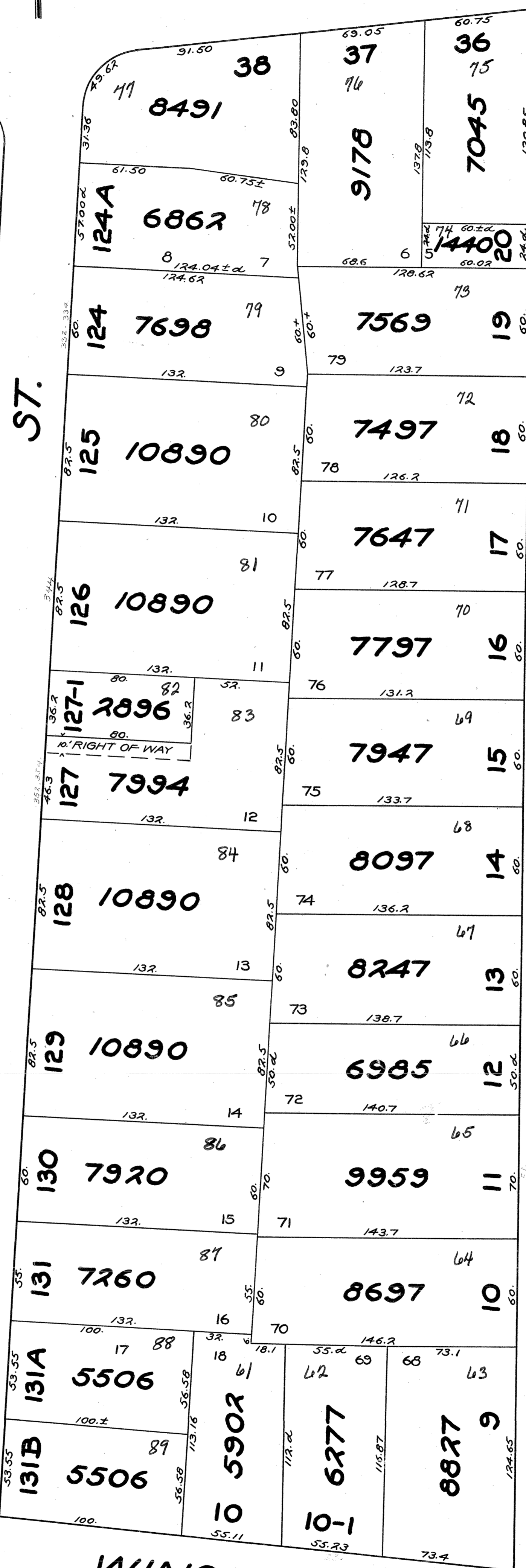


(54)

BOYLSTON ST.



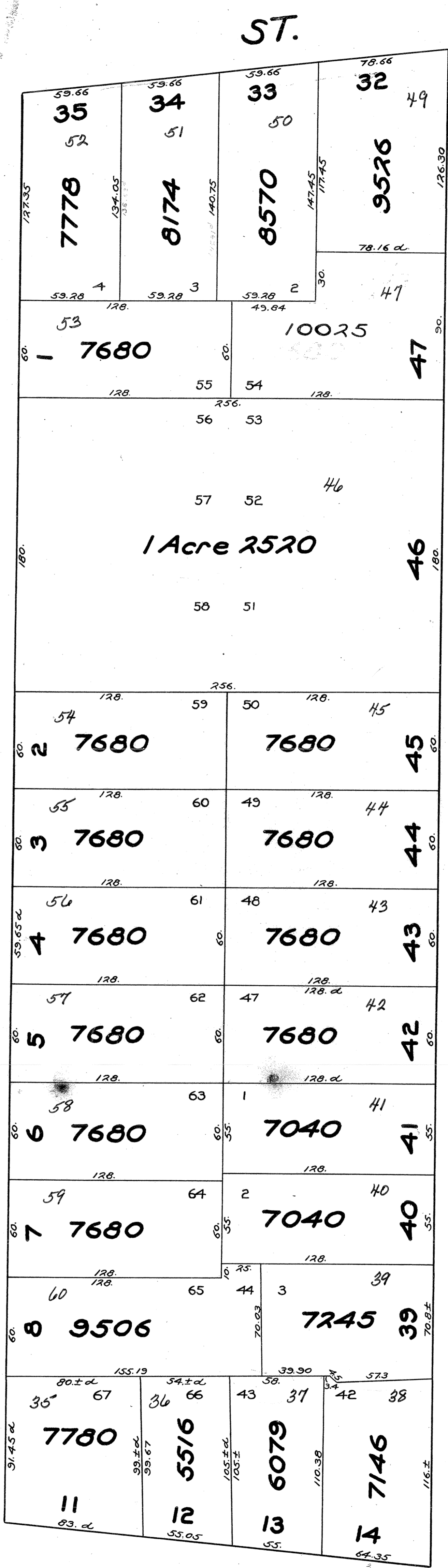
ASH ST.



WINONA

Map showing a section of,  
**BROCKTON**  
In the county of,  
**PLYMOUTH**  
In the state of,  
**MASSACHUSETTS**

GIFFORD ST.



(60)

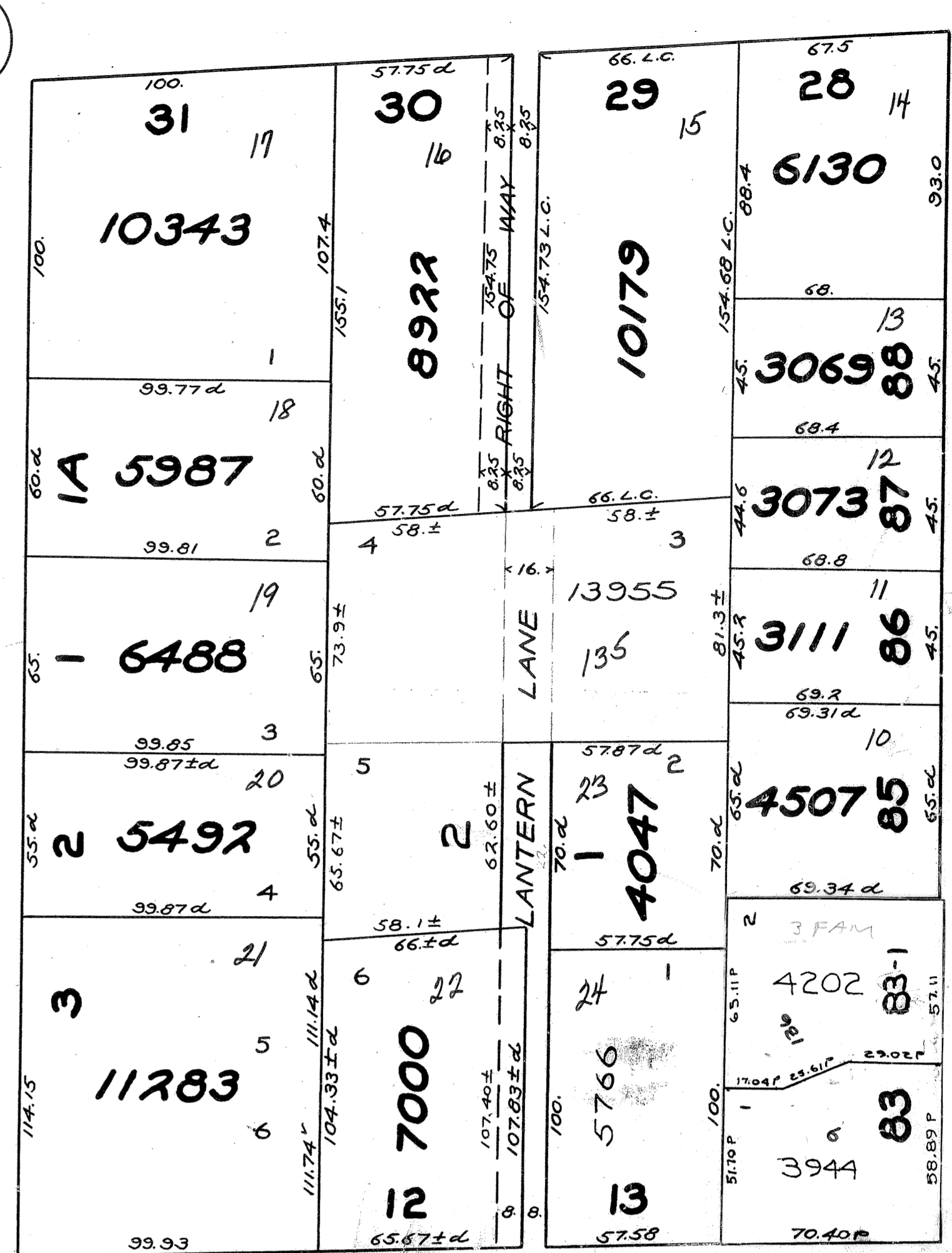
From ENGINEER'S OFFICE  
Scale 40ft.=1inch

ST.

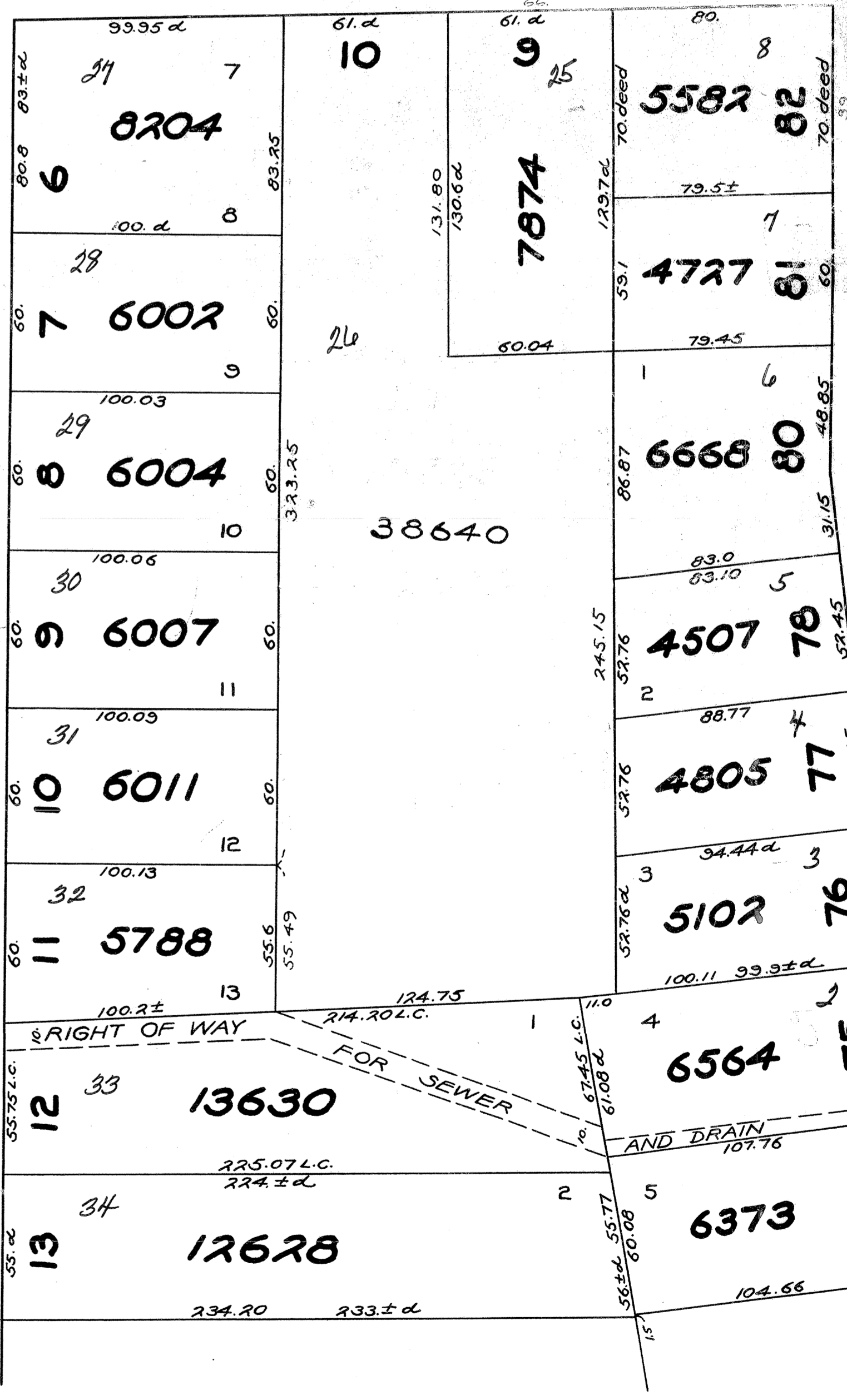
ST.

MANOMET

(55) ST.



LEAVITT ST.



(61)

GRAFTON

(56) ST.