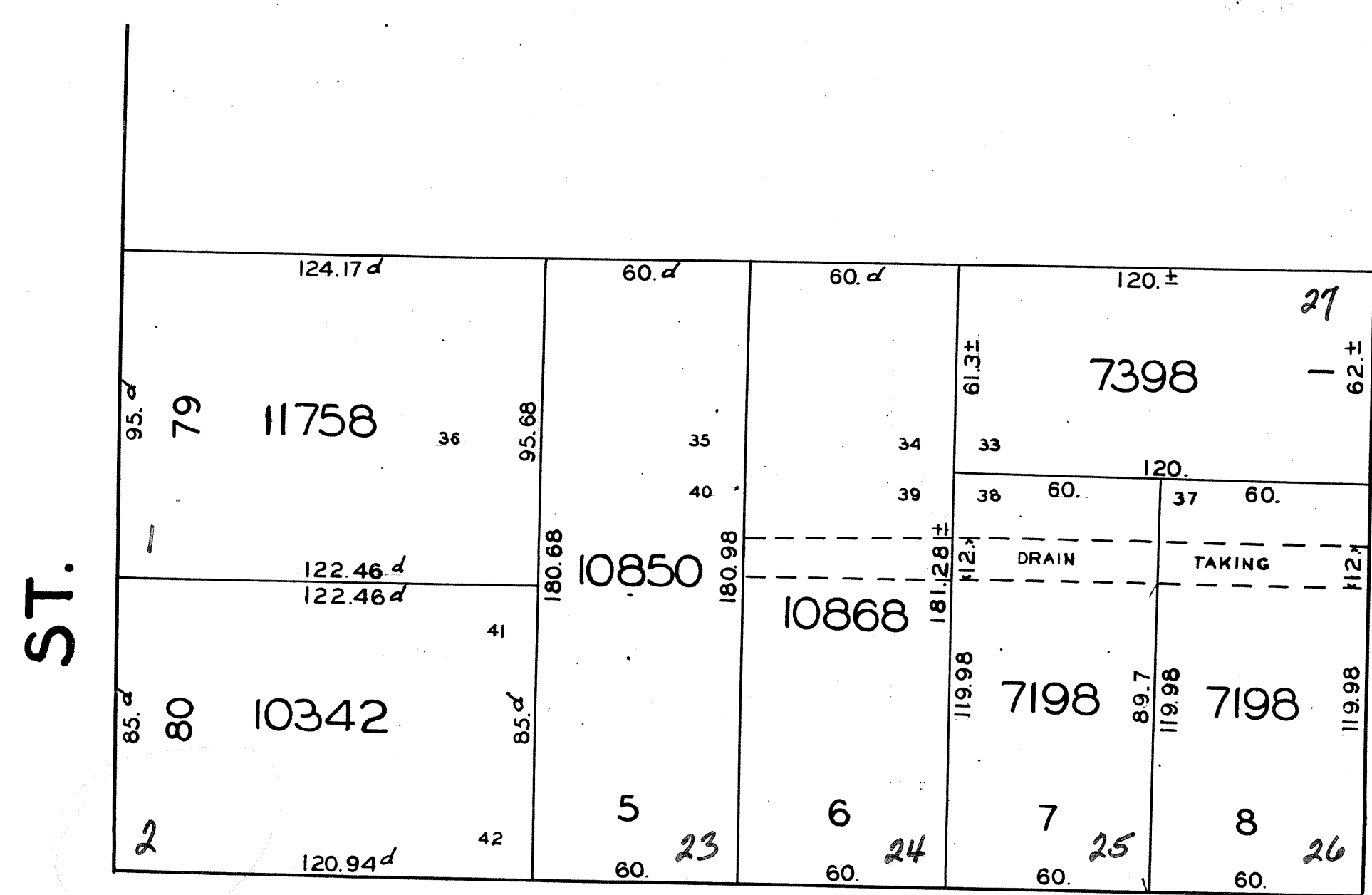
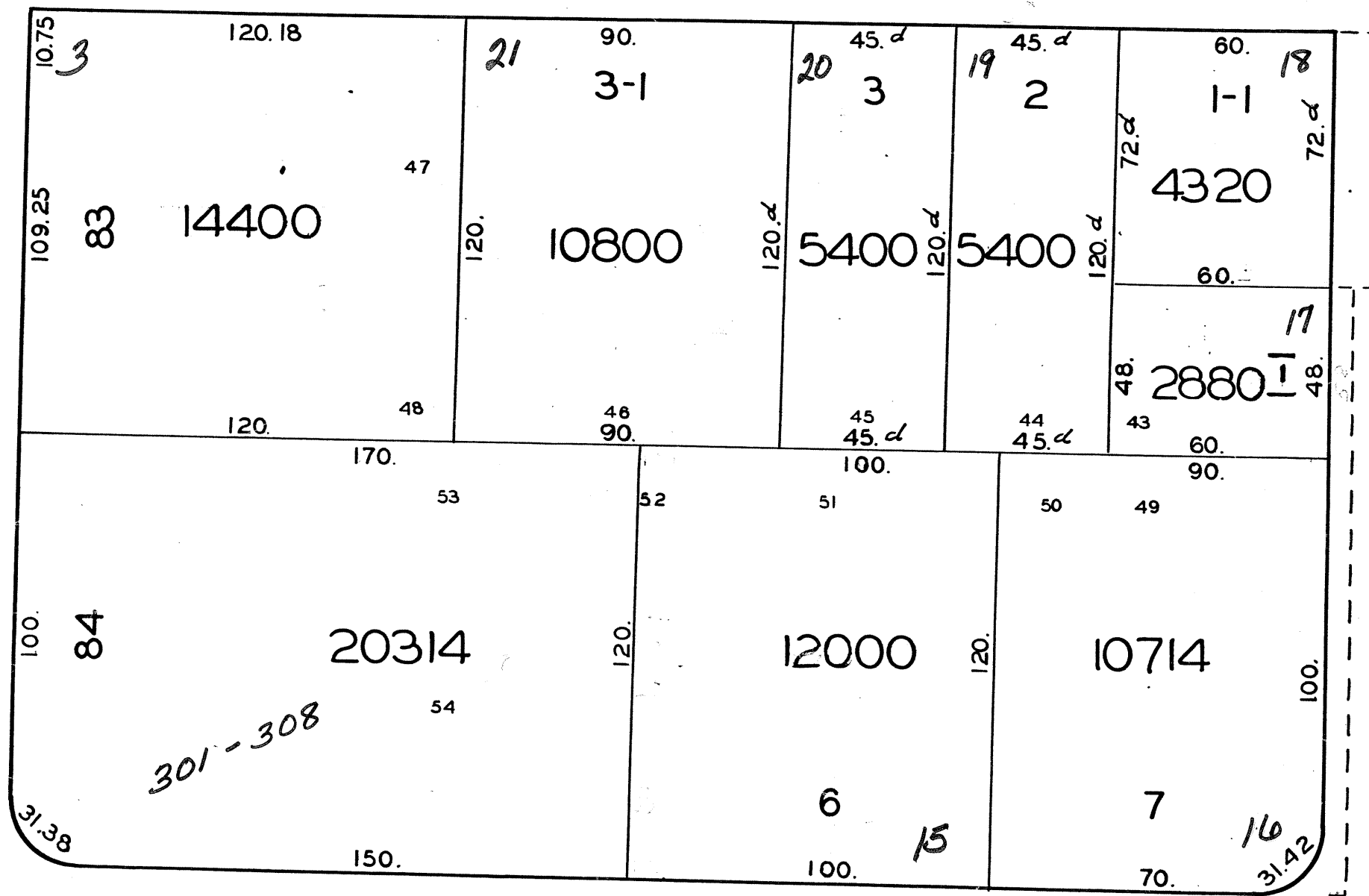


TRACED BY PLANSUBS, JUNE 27, 1977
CHECKED BY CRAIG YOUNG, JAN. 6, 1978.

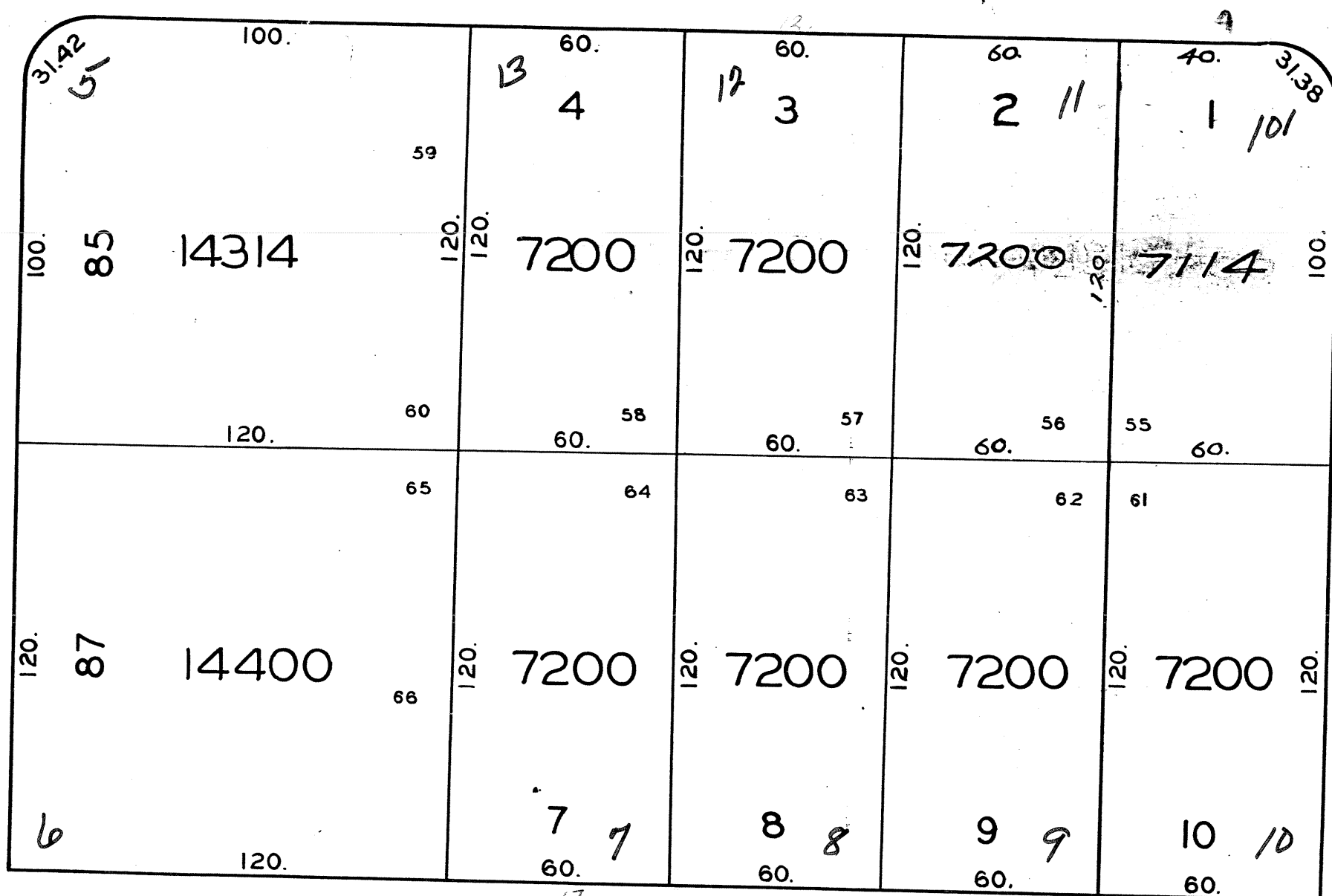
56



CARLETON ST.

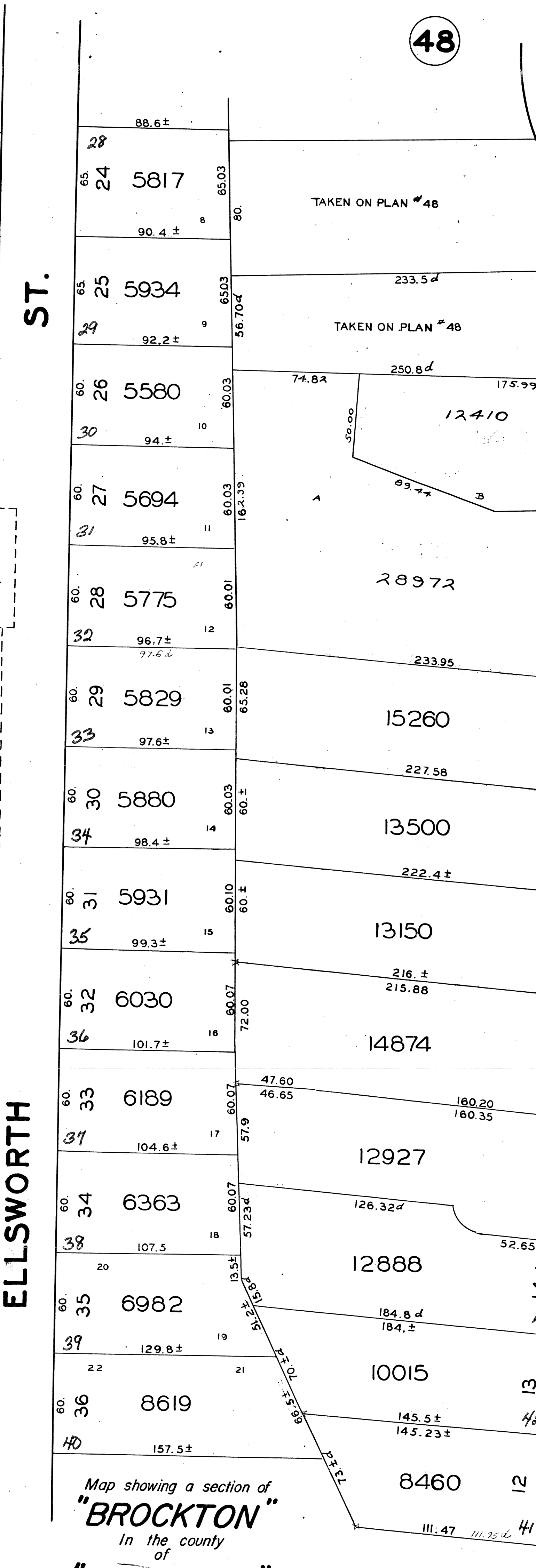


MONTGOMERY ST.



NO. ARLINGTON ST.

53



Map showing a section of
"BROCKTON"
In the county
of
"PLYMOUTH"
In the state
of
"MASSACHUSETTS"

48



HIGHLAND ST.

LEXINGTON STREET

GREEN ST.



MORELAND ST.

52

From
CITY ENGINEER'S OFFICE
Scale 1 inch = 40 ft.

51

48

SPRING ST.

49