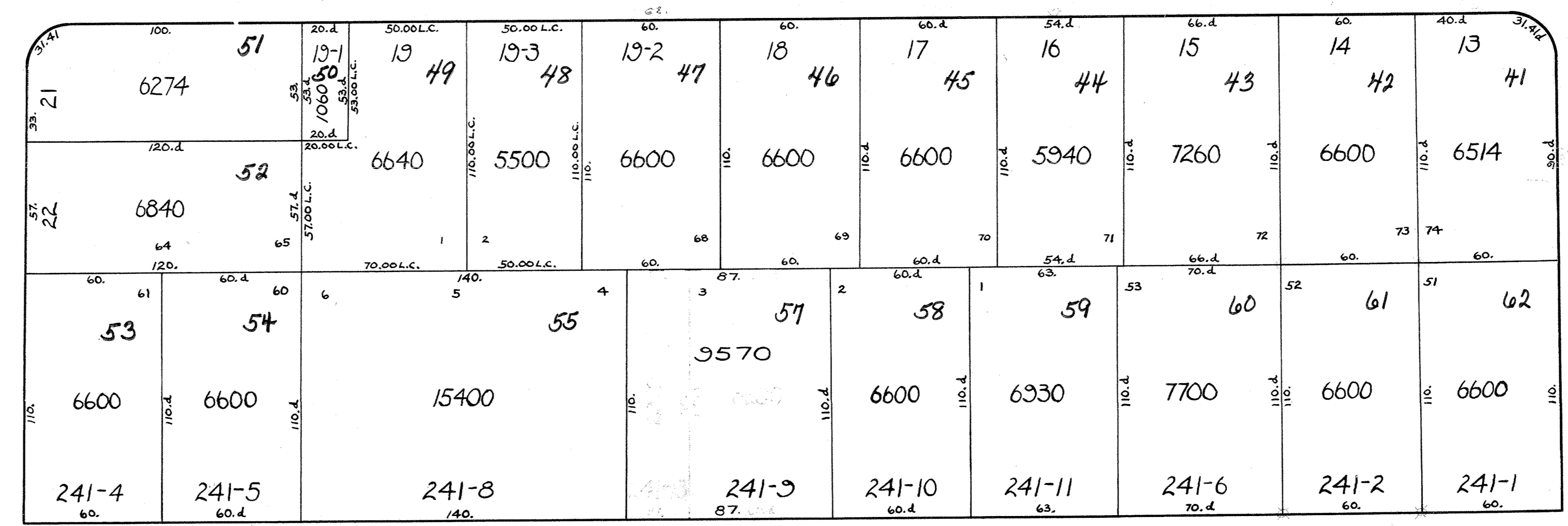
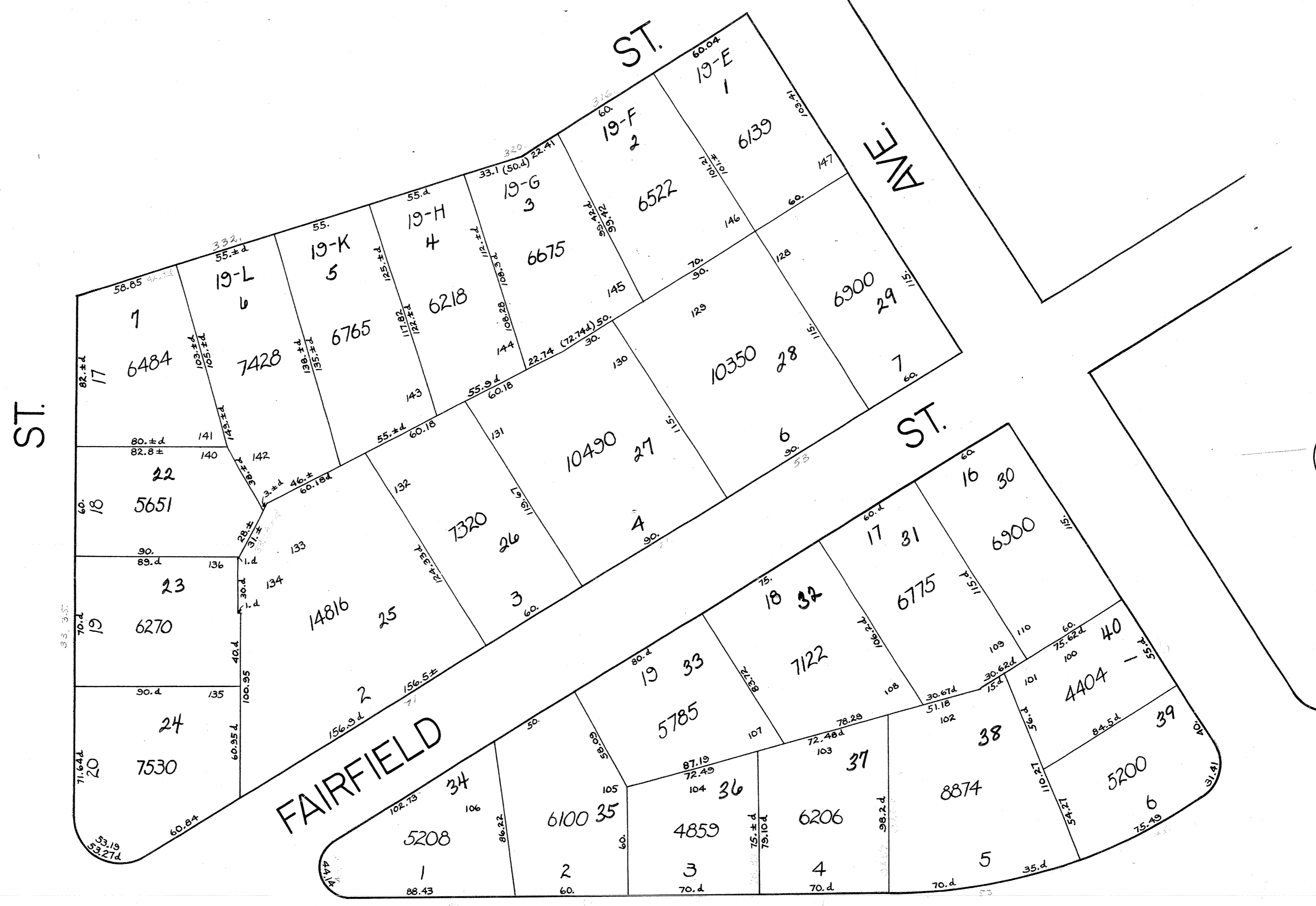
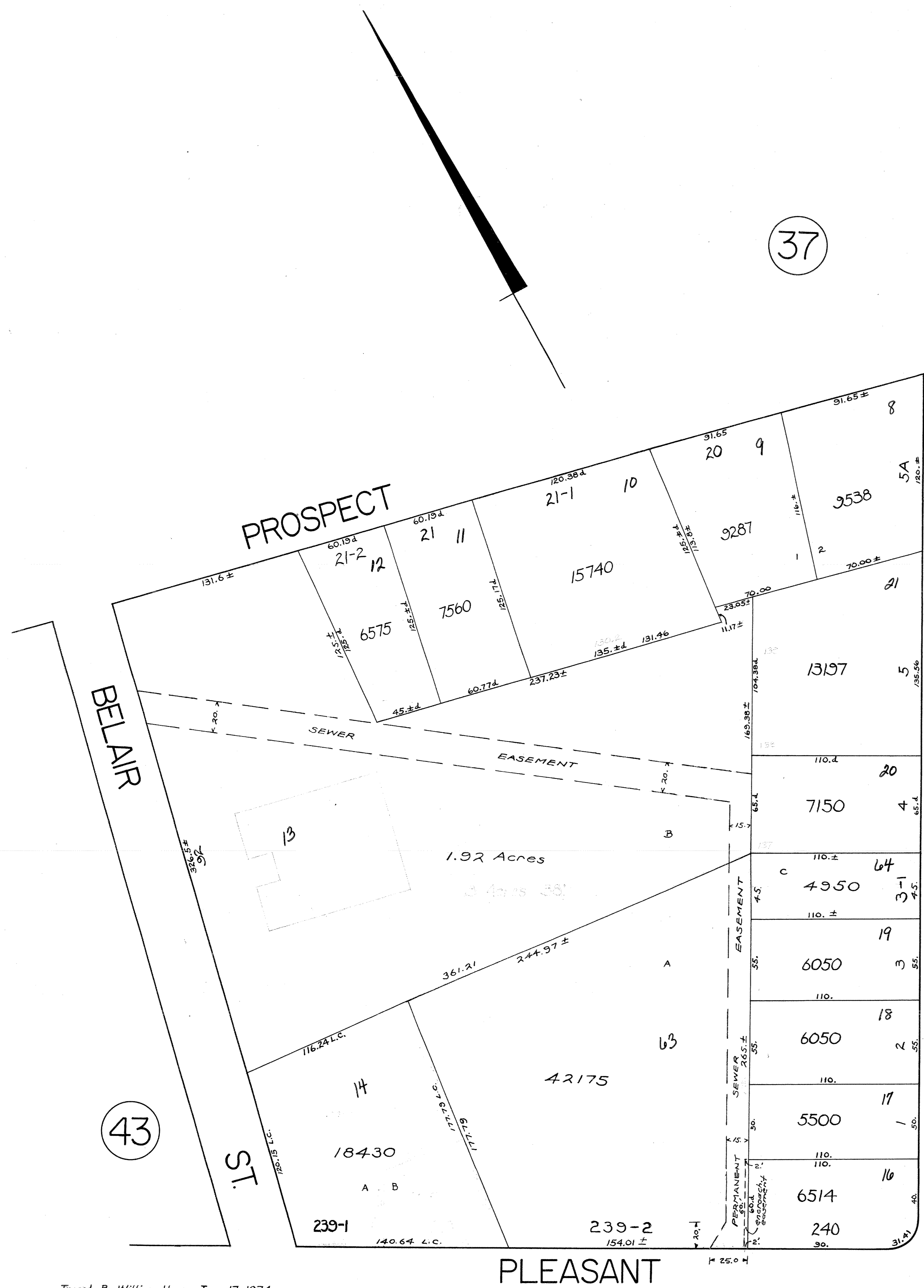


37

45

43

48



MAP SHOWING A SECTION OF
 "BROCKTON"
 IN THE COUNTY OF
 "PLYMOUTH"
 IN THE STATE OF
 "MASSACHUSETTS"

Traced By William Hover June 17, 1974.
 Checked By Craig Young June 19, 1974.

From:
 City Engineer's Office
 Scale: 1 inch = 40 feet