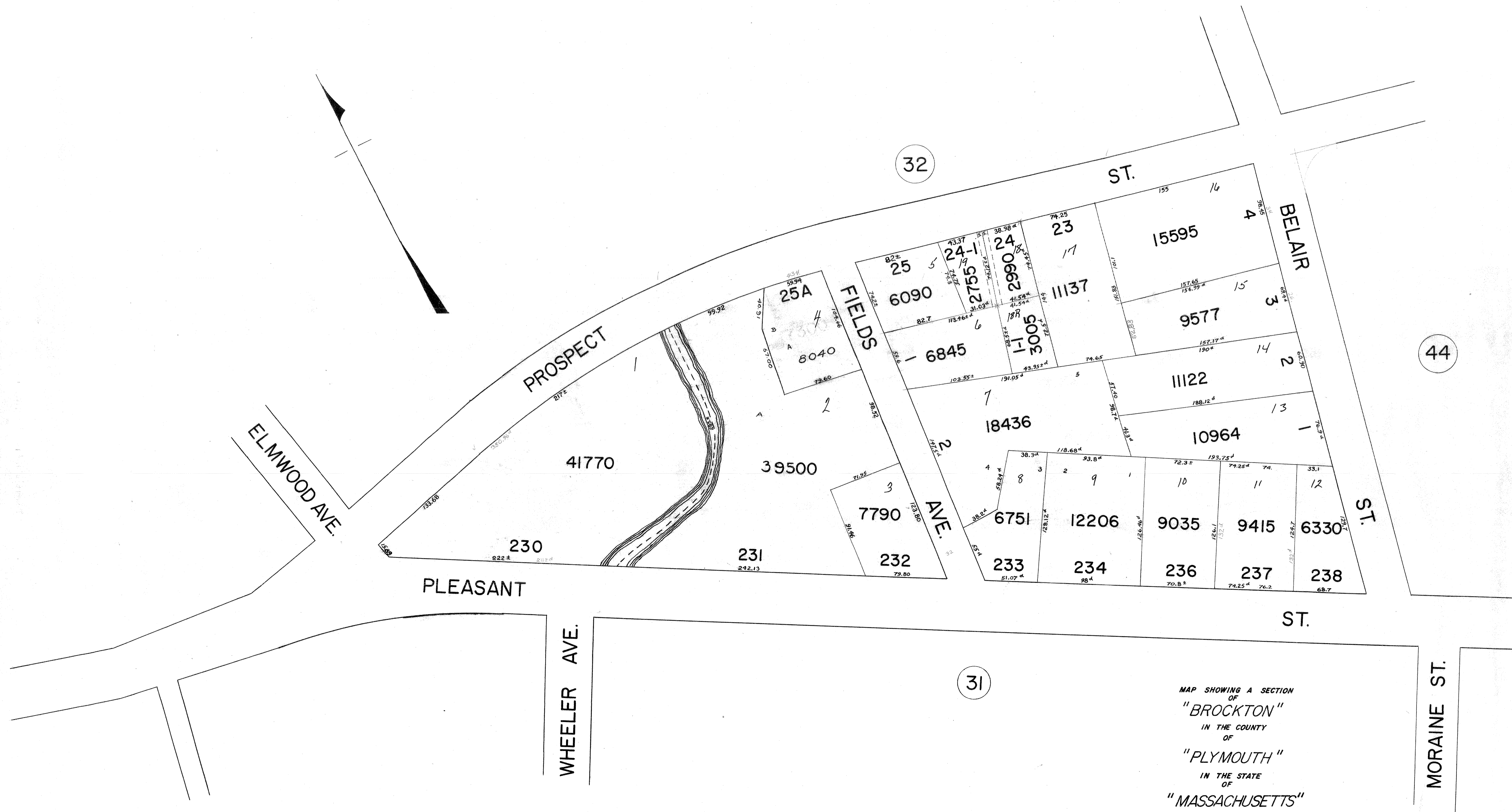


Traced by P.R. Hylen on Dec. 19, 1975.
Checked by C.C. Young and W.H. Hover.



MAP SHOWING A SECTION
OF
"BROCKTON"
IN THE COUNTY
OF
"PLYMOUTH"
IN THE STATE
OF
"MASSACHUSETTS"

From:
CITY ENGINEER'S OFFICE
Scale: 1 inch = 40 feet