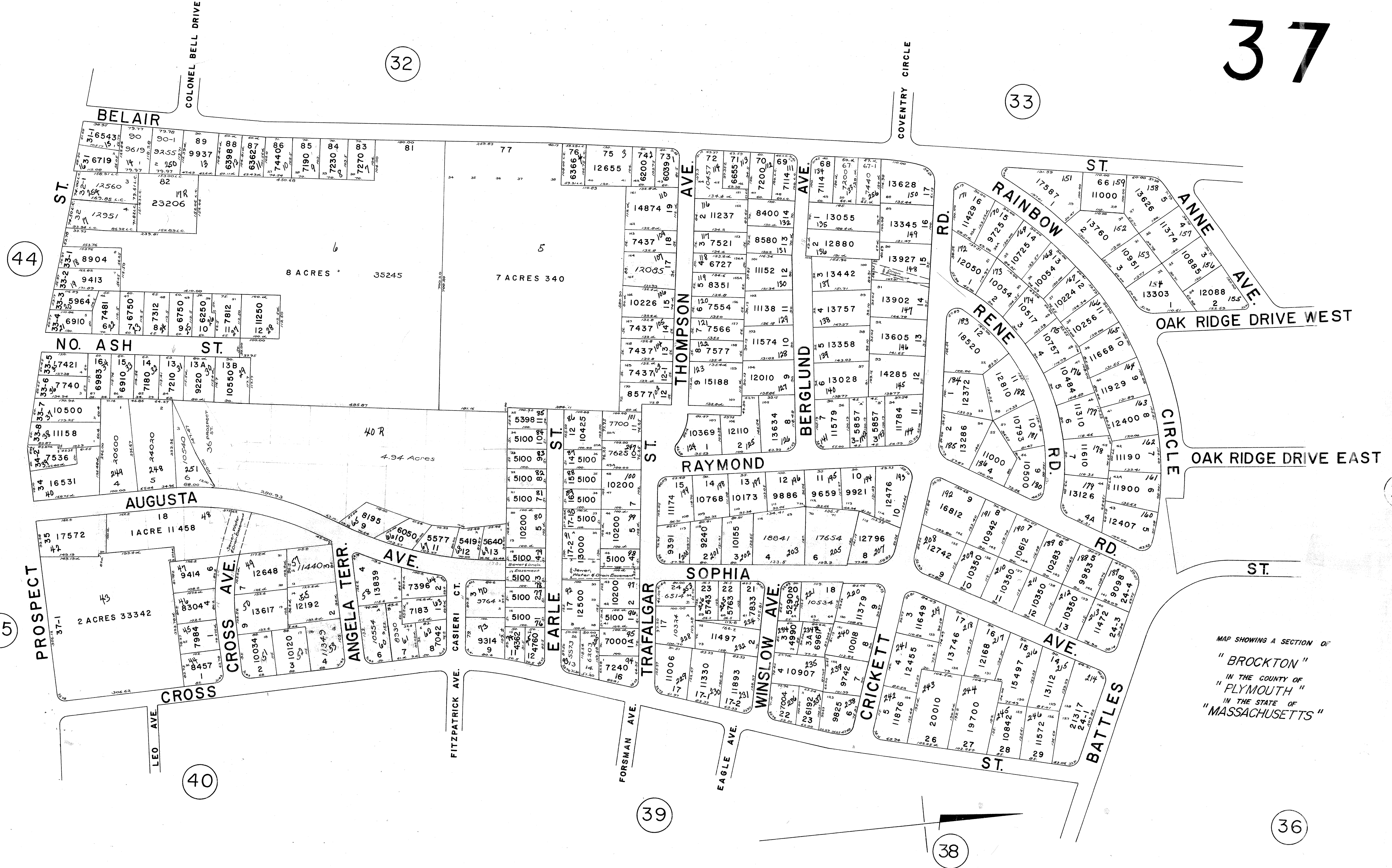


REPLOTTED BY R.A. FULLERTON CITY ENGINEER - MARCH 1971  
CHECKED BY R.A. FULLERTON AND R. PARSONS - MARCH 31, 1971



MAP SHOWING A SECTION OF  
" BROCKTON "  
IN THE COUNTY OF  
" PLYMOUTH "  
IN THE STATE OF  
" MASSACHUSETTS "

FROM  
CITY ENGINEER'S OFFICE  
SCALE: 1 INCH = 100 FT.