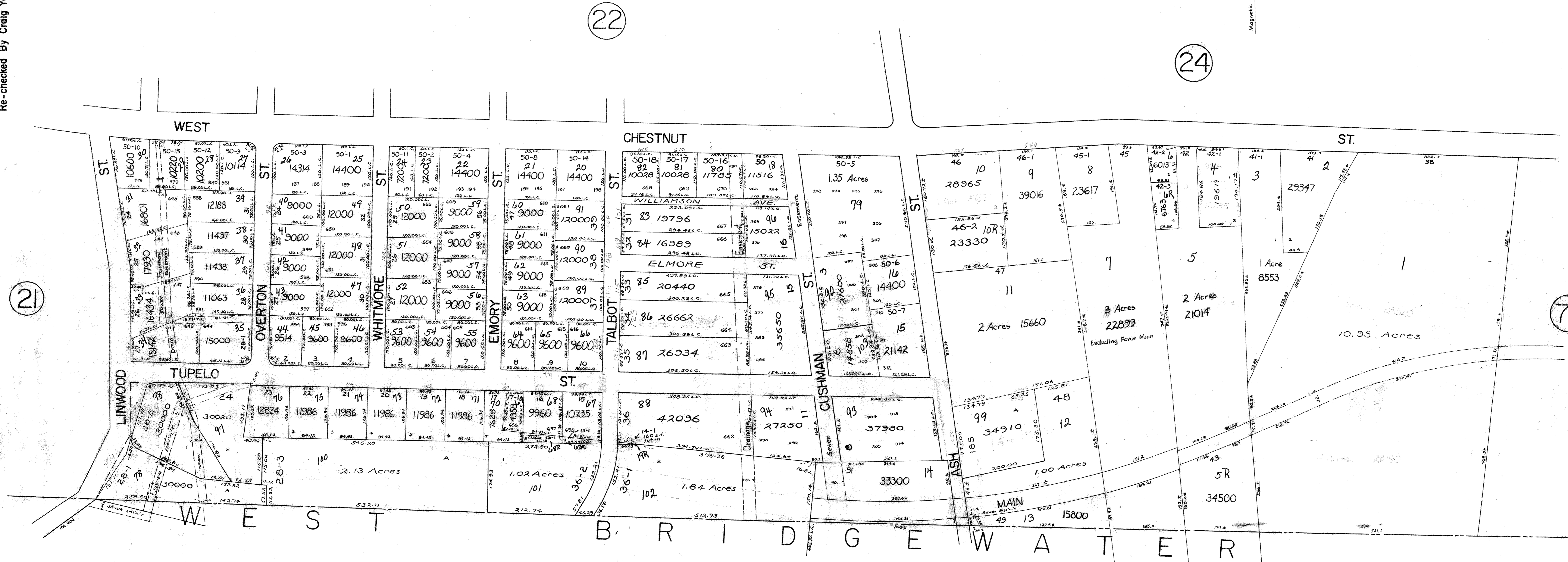


Traced By William H. Hover Dec. 21, 1973
Checked By Robert A. Fullerton Dec. 28, 1973
Re-checked By Craig Young and Arthur Whidden Dec. 28, 1973



MAP SHOWING A SECTION OF
BROCKTON
IN THE COUNTY OF
PLYMOUTH
IN THE STATE OF
MASSACHUSETTS

From:
City Engineer's Office
Scale: 1 inch = 100 feet