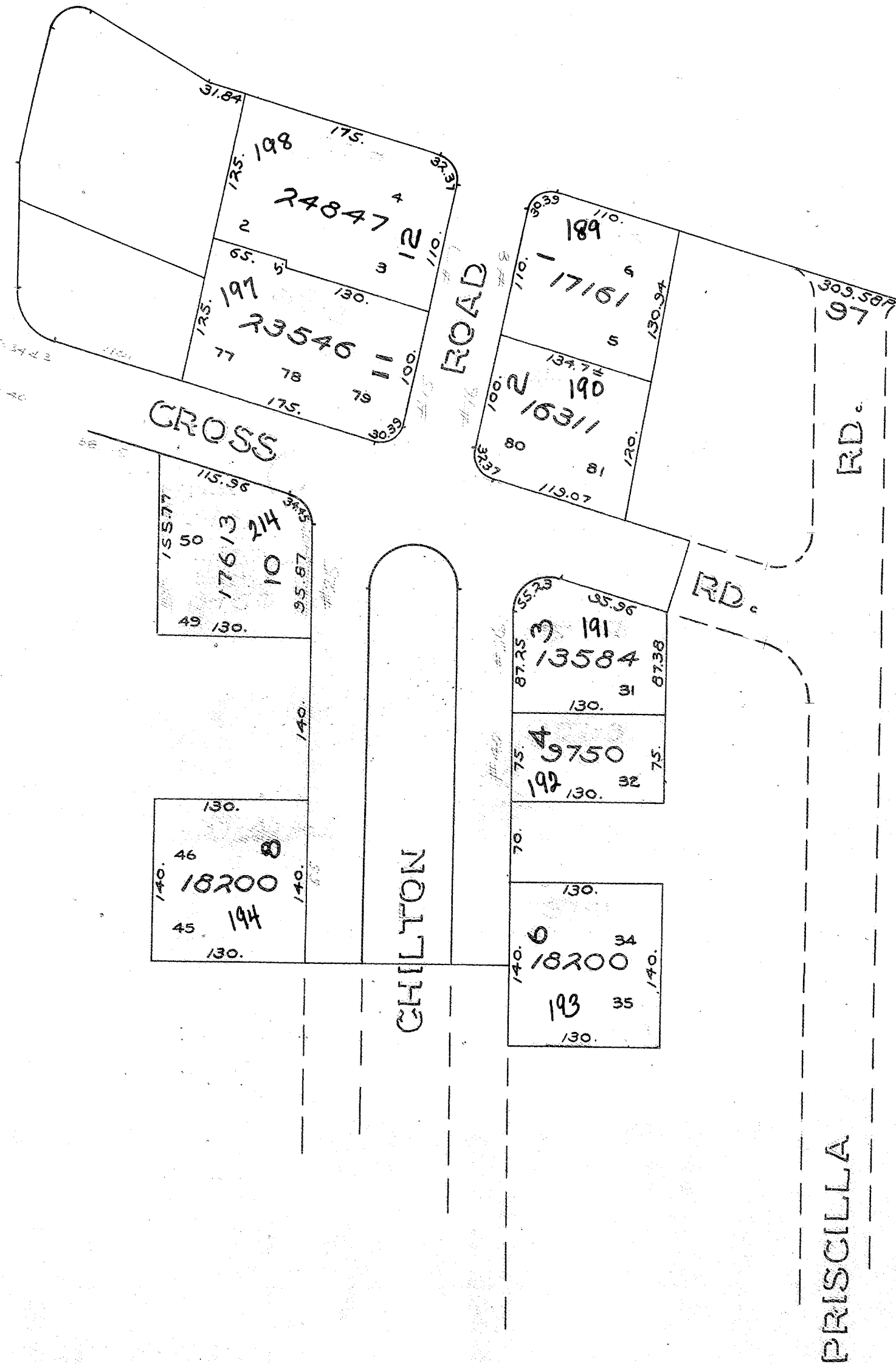


REPLOTTED BY H.B. NEWTON SEPT. 26, 1971.
CHECKED BY H.B. & N.W. R.A.F.

From:
CITY ENGINEERS OFFICE
Scale: 1 inch = 100 ft.

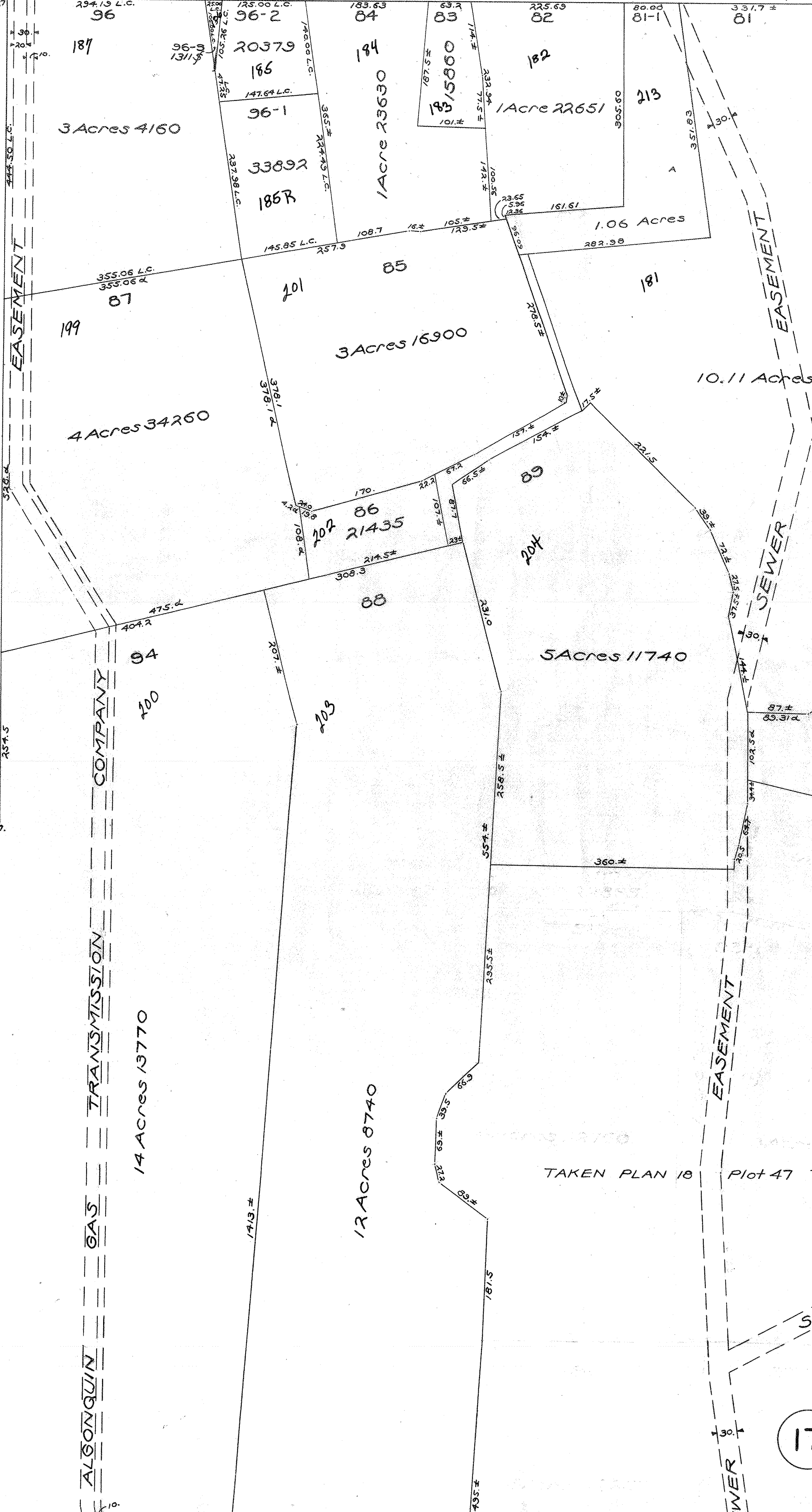
MAP SHOWING A SECTION OF
BROCKTON
IN THE COUNTY OF
PLYMOUTH
IN THE STATE OF
MASSACHUSETTS

11



TAKEN PLOT 37 PLEASANT ST.
59 Acres 27444

PLEASANT STREET



15

STREET



32

17

THORNY LEA GOLF ASSOCIATION
TAKEN PLAN 18 Plot 47 Torrey St.

16

31